



Luscombe Maye

Since 1873

Blackawton, Totnes

£335,000

🛏️ 2 🚿 1 🚗 1



DESCRIPTION

Luscombe Maye is delighted to bring to market this charming period cottage that blends characterful features with thoughtful modern updates, offering comfortable living in a picturesque village setting.

The ground floor is both welcoming and practical. The entrance porch provides access to a downstairs WC and hand basin and integral garage, before leading through to the main living room. This inviting space offers ample room for both sitting and dining areas and is centred around a cosy log burner. A step up leads to the kitchen, which is fitted with a range of wall and base units and enjoys views over the rear garden.

The first floor comprises of two-well proportioned double bedrooms, both filled with natural light and enjoying pleasant countryside outlooks. To complete the accommodation, a family bathroom is fitted with a walk-in shower, WC and hand basin.

To the front of the property is a south-facing paved terrace which provides an ideal setting for al fresco dining and relaxation. The rear garden is enclosed and thoughtfully landscaped, featuring a lawn, bordered by mature shrubs and a sheltered patio area, creating a peaceful and private retreat. A highlight of the rear garden is the stone outbuilding, consisting of a covered seating area and workshop/store. This versatile space offers flexibility for storage, a hobby space or home office.

This property also benefits from a garage, allowing secure parking and storage space.

FURTHER INFORMATION

If available, please scan the QR code or access the additional online material information (<https://moverly.com/sale/7dTs32AfUE1J7mP1sv6pc6/view>) . Alternatively, you can contact our team for this information.

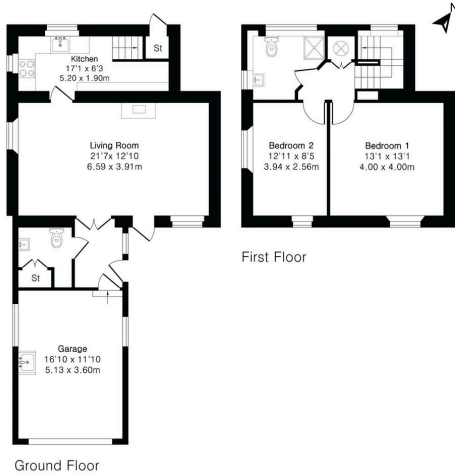
DIRECTIONS What3Words - grouping.nightcap.twist



**Approximate Gross Internal Area 1111 sq ft - 103 sq m
(Including Garage)**

Ground Floor Area 705 sq ft – 65 sq m

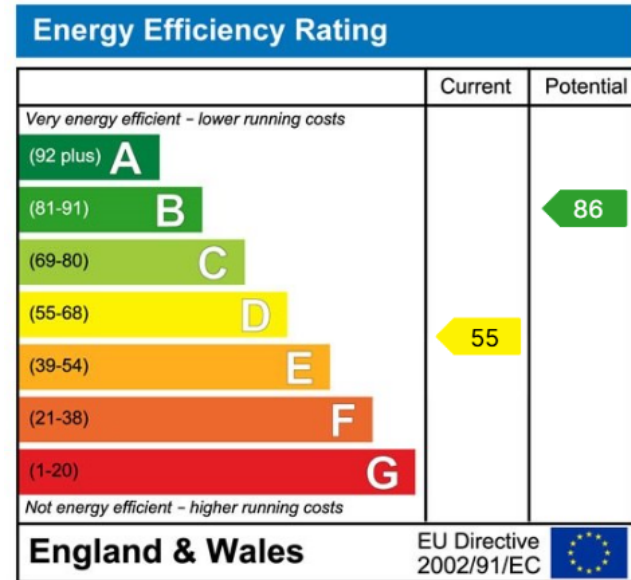
First Floor Area 406 sq ft – 38 sq m



- Charming Period Cottage
- Two Double Bedrooms
- Spacious Living Room with Log Burner
- Downstairs WC
- South-Facing Front Garden
- Garage
- Enclosed Rear Garden
- Convenient Workshop/Outbuilding
- Kitchen with Garden Views



Use the QR code for further “Material Information” about this home



Totnes:
59 Fore Street, Totnes TQ9 5NJ
01803 869920
totnes@luscombemaye.com
www.luscombemaye.com