

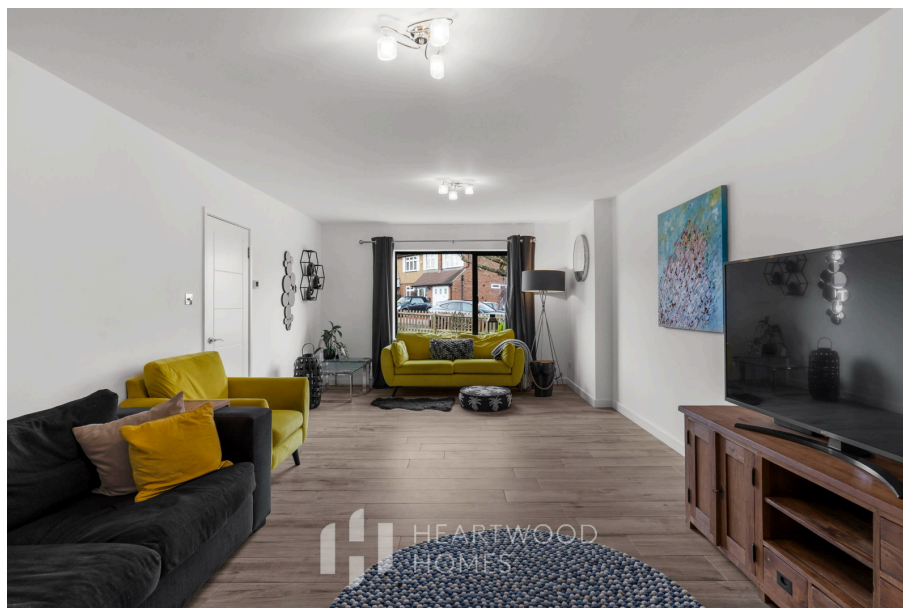


HEARTWOOD
HOMES

Meadow Close, St Albans, AL4 9TG

£1,500,000

🛏️ 4 🚿 3 🚗 3



A stunning, semi detached Nash built family home approximately 2475 Sqft in size, which is pleasantly set on a quiet cul de sac in the heart of Marshalswick, this beautifully extended Nash-built semi offers the kind of space and flow that really suits modern family life.

It's a location that's hard to beat. You've got some of the area's most sought-after schools including Sandringham which is only 733.9 Metres away. just a short walk away, handy local shops and cafés at The Quadrant around the corner, and St Albans' city centre within easy reach for weekends out, whether that's a relaxed brunch, a bit of shopping or an evening with friends.

From the moment you arrive, the house makes a great first impression, with a smart driveway providing plenty of parking and a well-kept front garden setting the tone for what's inside.

Step through the front door and you're welcomed by a spacious entrance hall, with a useful utility room and ground floor W.C. keeping day-to-day life nicely organised. To the front, the 24ft living room is a lovely place to unwind, filled with natural light and ideal for cosy evenings in.

The real hub of the home sits to the rear. The open-plan kitchen, dining and family space has been designed with both everyday living and entertaining in mind. With sleek modern units, quartz worktops, integrated appliances and a generous breakfast bar, it's a space where everyone naturally comes together. Skylights above and bifold doors across the back bring in fantastic light and open straight onto the garden, making it just as good for summer get-togethers as it is for busy weekday mornings.

There's also a versatile additional reception room to the front, complete with its own side access and W.C. Whether you're working from home, running a business, or just need a separate space for the kids, it's a really flexible addition.

Upstairs on the first floor are three comfortable double bedrooms





TOTAL FLOOR AREA: 2475 sq.ft. (230.0 sq.m.) approx.
Whilst every attempt has been made to ensure the accuracy of the floorplan contained herein, measurements of doors, windows, rooms and any other items are approximate and no responsibility is taken for any error, omission or mis-statement. This plan is for illustrative purposes only and should be used as such by any prospective purchaser. The services, systems and appliances shown have not been tested and no guarantee as to their operability or efficiency can be given.
 Made with Metreplex ©2020



- Quiet cul de sac setting in the heart of Marshalswick, ideal for families
- Short walk to highly regarded primary and secondary schools
- Impressive open-plan kitchen, dining and family space with skylights and bi-fold doors
- Versatile additional reception room with side access and W.C, ideal for home working
- Sunbloss garden with decking, lawn and garden store/workshop
- Extended Nash-built semi offering approximately 2475 sqft of flexible living space
- Bright 24ft living room overlooking the front garden
- Modern kitchen with quartz worktops, integrated appliances and breakfast bar
- Four double bedrooms including a top floor main suite with dressing room and ensuite

