



## Flat 2 131 Hornsey Road, London, N7 6DP

£507 Per Week

- Adjacent to Finsbury Park
- private roof terrace
- Open Plan Kitchen/Living Room
- Period Conversion

## Flat 2 131 Hornsey Road, London N7 6DP

A beautifully finished one bedroom flat with an additional study, open plan living and kitchen area, private roof terrace and modern bathroom.

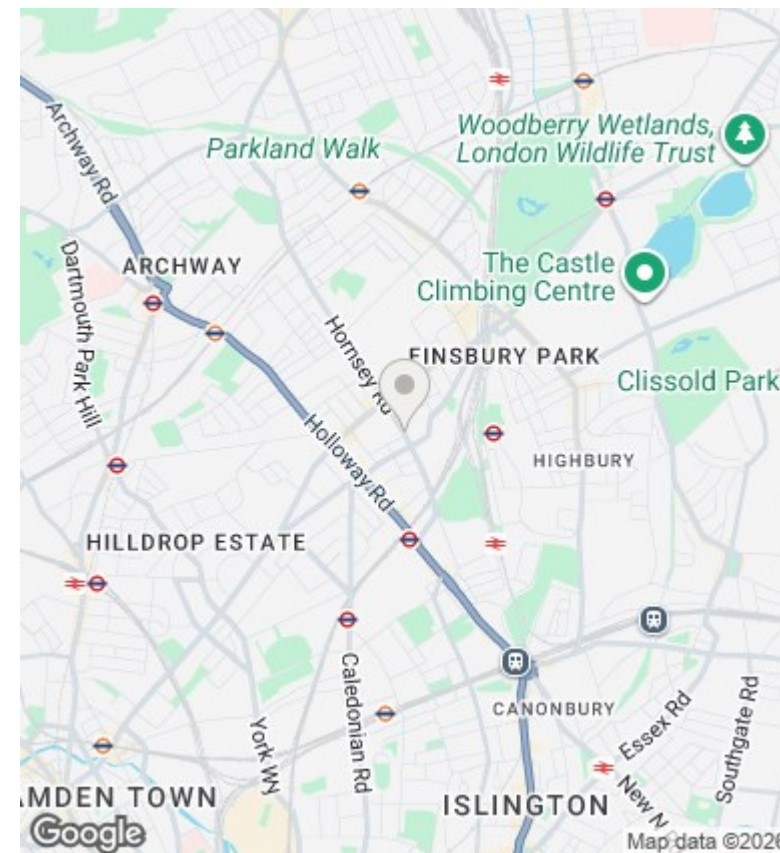
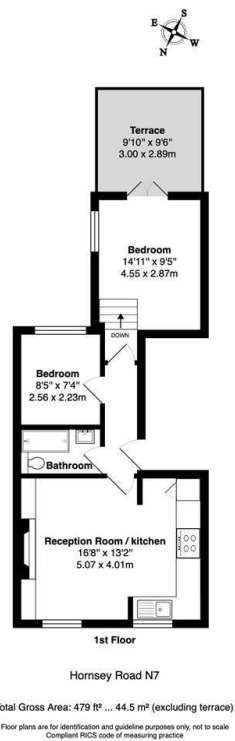
Extensive bus links and a variety of amenities are found close by on Holloway Road.

Offered furnished and available early April 2026.



Council Tax Band: D





## Directions

## Viewings

Viewings by arrangement only. Call 02073593191 to make an appointment.

## Council Tax Band

D

Energy Efficiency Rating		Current	Potential
Very energy efficient - lower running costs			
(92 plus) A			
(81-91) B			
(69-80) C		72	78
(55-68) D			
(39-54) E			
(21-38) F			
(1-20) G			
Not energy efficient - higher running costs			
England & Wales		EU Directive 2002/91/EC	

Full description





Score	Energy rating	Current	Potential
92+	<b>A</b>		
81-91	<b>B</b>		
69-80	<b>C</b>		75 <b>C</b>
55-68	<b>D</b>	62 <b>D</b>	
39-54	<b>E</b>		
21-38	<b>F</b>		
1-20	<b>G</b>		

