

Loxford Gardens, N5

£2,750 Per week

A very well presented two double bedroom apartment in this modern development in Loxford Gardens. It has two bathrooms, a modern open plan kitchen, wooden flooring in the living area and is very bright throughout.

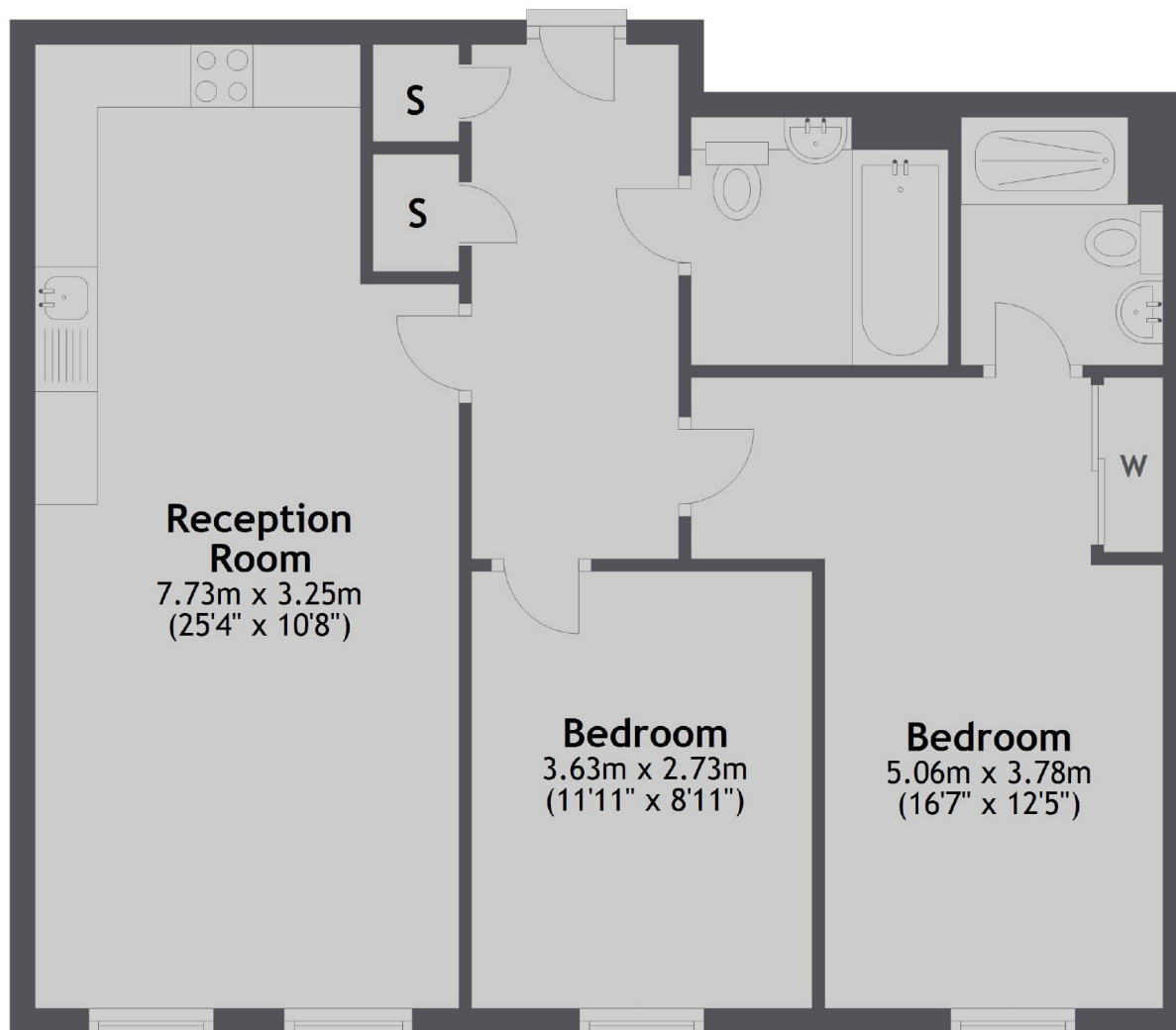
Loxford Gardens is located off Highbury Park with Arsenal station just 0.3 miles away, plus Drayton Park and Finsbury Park also within 0.5 miles. It is just a short walk from leafy Clissold Park and Highbury Fields.

Features

- Two Double Bedrooms
- Two Bathrooms
- 24 Hour Concierge
- Modern Development
- Communal Gardens
- Furnished

Loxford Gardens, London, N5

Third Floor



Total area: approx. 67.0 sq. metres (720.7 sq. feet)