



Villiers Close, KT5

£725,000

Dexters



Villiers Close, KT5

A charming three-bedroom semi-detached home offering exceptional potential to extend (STPP), ideally situated between the vibrant centres of Kingston upon Thames and Surbiton.

The ground floor comprises a spacious double reception room, a fitted kitchen, a useful utility area, and an integral garage. Upstairs, there are three well-proportioned bedrooms and a family bathroom.

To the front, the property benefits from off-street parking, while to the rear is a beautifully maintained mature landscaped garden, providing a wonderful outdoor space to enjoy.

Offering significant scope for enhancement, the property also presents an exciting opportunity for a double-storey side extension, subject to the usual planning permissions (STPP).

Villiers Close is conveniently equidistant to both Kingston and Surbiton town centres and is in close proximity to outstanding primary schools. An abundance of local rail transport links are also all within a mile, including the fast train to Waterloo in 16 minutes.

Features

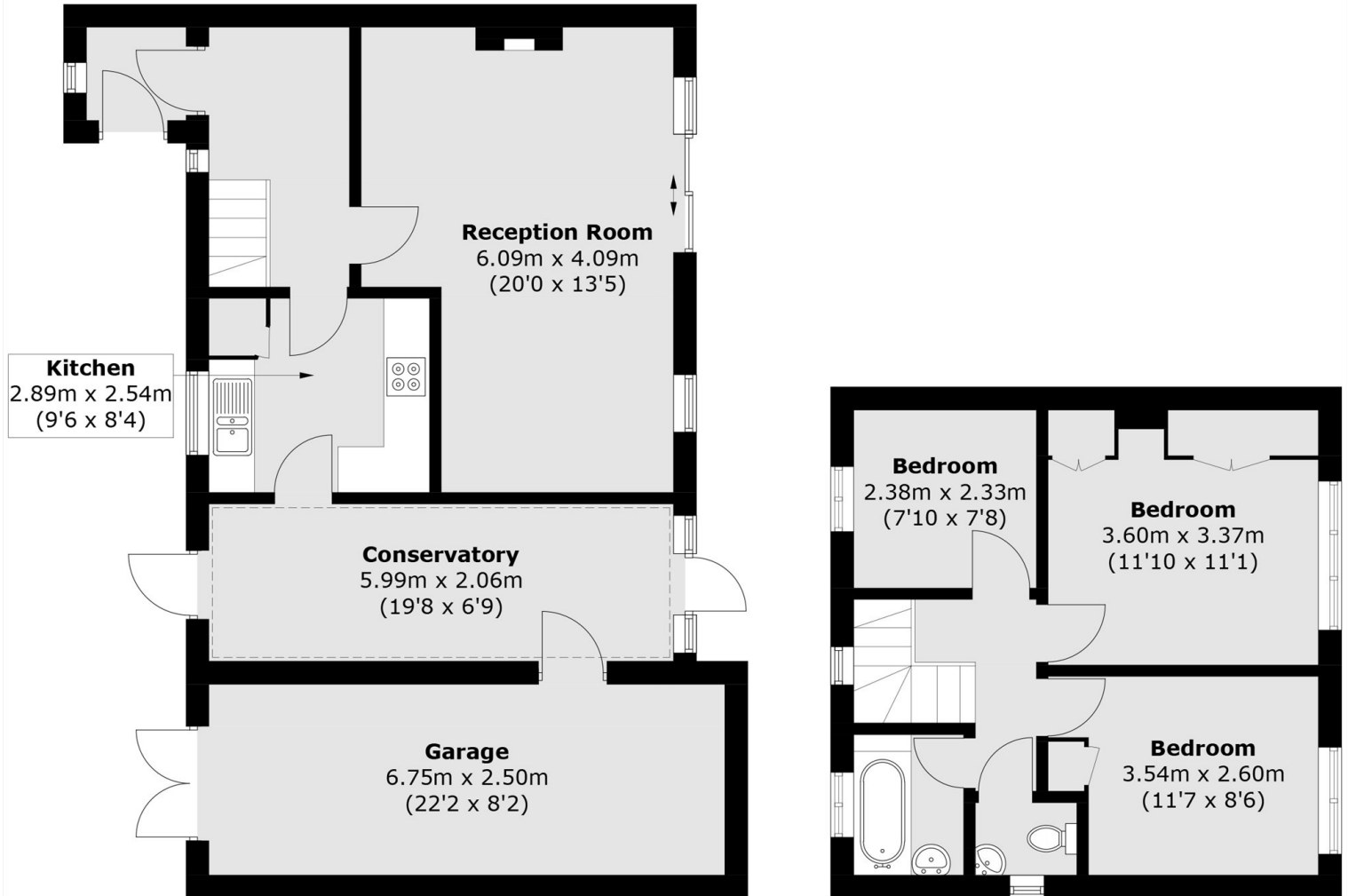
- Semi Detached
- Quiet Cul-De-Sac
- Garage
- Off Street Parking
- Potential To Extend (STPP)
- No Onward Chain







Villiers Close, Surbiton, KT5



Ground Floor

First Floor

Total area (approx.): 109.0 sq. m (1,173.3 sq. ft)
(Including Garage)