



Ann Cordey
ESTATE AGENTS

67 Woodland Road, Darlington, DL3 7BQ
Asking Price £500,000



67 Woodland Road, Darlington, DL3 7BQ

Welcome to this outstanding period townhouse, thoughtfully renovated and comprehensively upgraded to an exceptional standard. Reimagined approximately eight years ago, the property seamlessly combines the elegance and character of its original architecture with high-quality contemporary finishes, creating a truly impressive family home arranged over four beautifully appointed floors.

From the moment you step inside, the quality of the refurbishment is immediately apparent. Careful attention has been paid to preserving the property's period charm whilst introducing modern design elements that complement rather than compete with its heritage. The result is a home of remarkable style, comfort and practicality, where craftsmanship, quality materials and architectural integrity are evident throughout.

Every room benefits from a cohesive and sophisticated interior scheme, with all walls finished in premium paints. This thoughtful approach enhances the abundance of natural light and highlights the property's many original features.

The accommodation is both generous and versatile, offering four double bedrooms, two luxurious bathrooms and a selection of elegant reception spaces designed to suit modern family living. These include a superb cinema room, a delightful garden room and further reception areas that provide flexibility for entertaining, relaxing or working from home.

The immaculate presentation throughout reflects the care and attention invested by the current owners. Original features have been sympathetically maintained and enhanced, whilst contemporary upgrades ensure the home meets the demands of modern living without compromising its character.

Externally, the property continues to impress with a south-facing rear garden that enjoys excellent levels of sunshine throughout the day. This attractive outdoor space provides the perfect setting for gardening, family enjoyment or simply relaxing outdoors. A particularly valuable feature is the secure off-street parking for multiple vehicles, accessed via electric double gates from the rear lane and supported by a fully functioning security system — a rare advantage for a property of this type and location.

This is a home that successfully balances period elegance with modern convenience, offering substantial accommodation, exceptional presentation and a highly desirable setting on Woodland Road. Properties of this calibre seldom come to market, and early viewing is strongly recommended to fully appreciate everything this remarkable townhouse has to offer.

LIVING ROOM

19'3" x 16'4" (5.89 x 5.00)

SITTING ROOM

16'11" x 19'3" (5.16 x 5.89)

KITCHEN

15'3" x 18'0" (4.65 x 5.50)

UTILITY

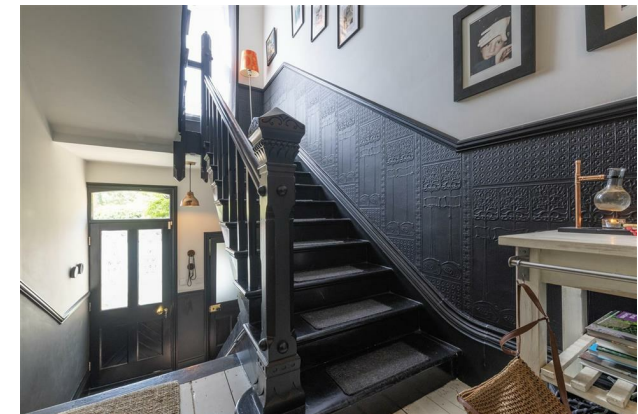
10'6" x 7'6" (3.21 x 2.31)

STUDY

17'5" x 14'6" (5.31 x 4.43)

BEDROOM ONE

14'9" x 15'6" (4.51 x 4.74)



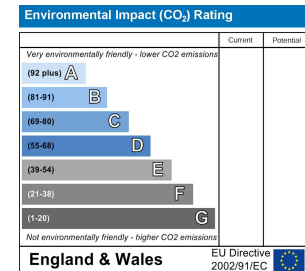
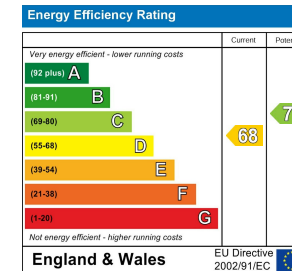
BEDROOM TWO
14'11" x 13'9" (4.55 x 4.21)

BEDROOM THREE
13'9" x 17'10" (4.21 x 5.45)

BEDROOM FOUR
14'8" x 14'11" (4.49 x 4.57)

BATHROOM ONE
7'2" x 14'11" (2.20 x 4.56)

BATHROOM
2.31 X 4.20



YOUR HOME IS AT RISK IF YOU DO NOT KEEP UP REPAYMENTS ON A MORTGAGE OR OTHER LOANS SECURED ON IT.

These particulars do not constitute, nor constitute part of, an offer or contract. An intending purchaser must satisfy himself by inspection or otherwise as to the correctness of each of the statements contained in these particulars. The vendor does not make or give, and neither Ann Cordey, or any other person in their employment has any authority to make or give any representation or warranty whatever in relation to this property. All measurements are approximate.



13 Duke Street, Darlington, County Durham, DL3 7RX
Tel: 01325 488433
Email: sales@anncordey.com
www.anncordey.com



