



OVER 60?

Secure this property
for up to **59% less!**

Price
£325,000

Freehold

2x  1x  2x 

**Milton Road,
Swanscombe, Kent,
DA10**

Wards
Helping you move forwards



Main features

- **Lovely semi detached house**
- **Secluded rear garden, ideal for relaxing or outdoor enjoyment**
- **Ideal for first time buyers**
- **Upstairs bathroom**
- **Close to Swanscombe train station**

Accommodation

GROUND FLOOR

Hallway

Living Room: 13'8 x 10'7 (4.17m x 3.23m)

Dining Room: 12'1 x 11'1 (3.69m x 3.38m)

Kitchen: 11'1 x 8'5 (3.38m x 2.57m)

FIRST FLOOR

Landing

Bedroom 1: 14'3 x 11'0 (4.35m x 3.36m)

Bedroom 2: 12'8 x 8'4 (3.86m x 2.54m)

Bathroom

OUT BUILDING

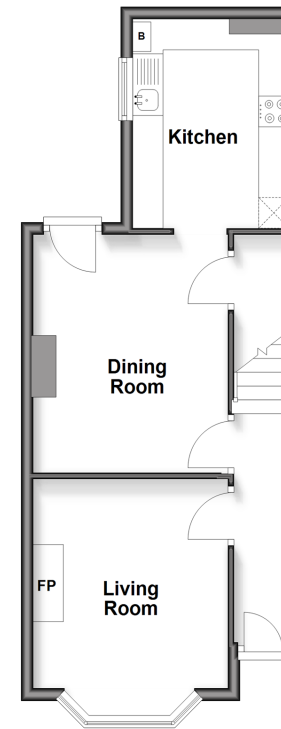
Garage

OUTSIDE

Rear Garden

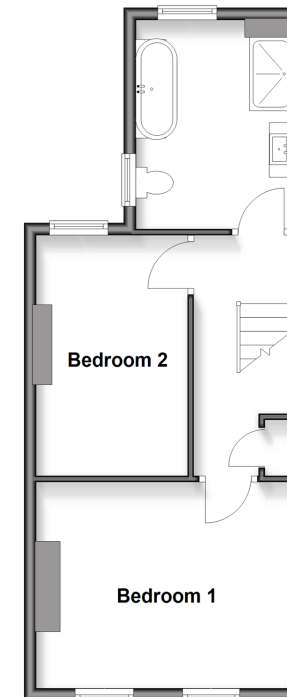
Ground Floor

Approx. 39.8 sq. metres (427.9 sq. feet)



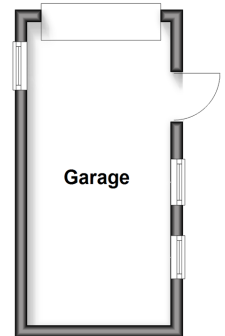
First Floor

Approx. 40.2 sq. metres (432.9 sq. feet)



Outbuilding

Approx. 11.7 sq. metres (126.4 sq. feet)



Call Dartford - 01322 288211 ■ wardsofkent.co.uk

■ Legal advice should be taken to verify fixtures/fittings, planning, alterations and/or lease details
 ■ Through a Homewise Home For Life Plan people aged 60+ can secure this property for up to 59% less, by purchasing a Lifetime Lease

■ Appliances & services are untested, dimensions are approximate and floor plans are not to scale



10546260/20260117/MP/JH