



Long Arrotts, Hemel Hempstead, HP1 3EX
Offers In Excess Of £360,000

Clements are delighted to market this wonderful terraced property in the sought after area of Gadebridge. Set close to local schools and amenities and boasting three bedrooms, 16'10" living/dining room, separate fitted kitchen, gas central heating, double glazing and a large rear garden.

Entrance Hall

Lounge/Dining Room 16'10 x 11'3 (5.13m x 3.43m)



Bedroom Two 9'11 x 6'10 (3.02m x 2.08m)



Bedroom Three 8'5 x 7'10 (2.57m x 2.39m)



Fitted Kitchen 10'10 x 8'10 (3.30m x 2.69m)

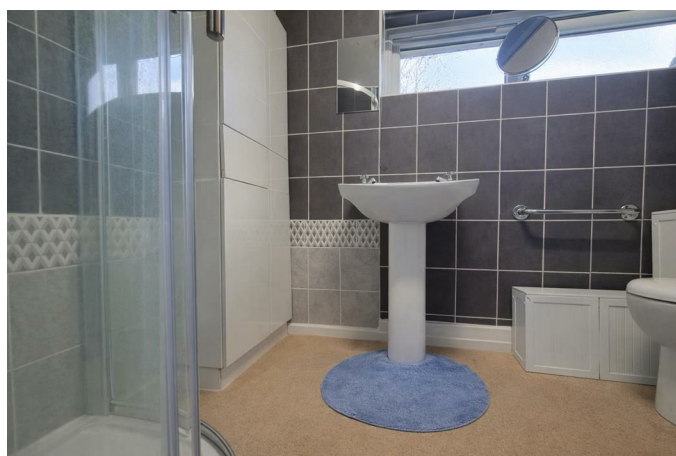


Landing

Bedroom One 11'10 x 9'8 (3.61m x 2.95m)



Bathroom

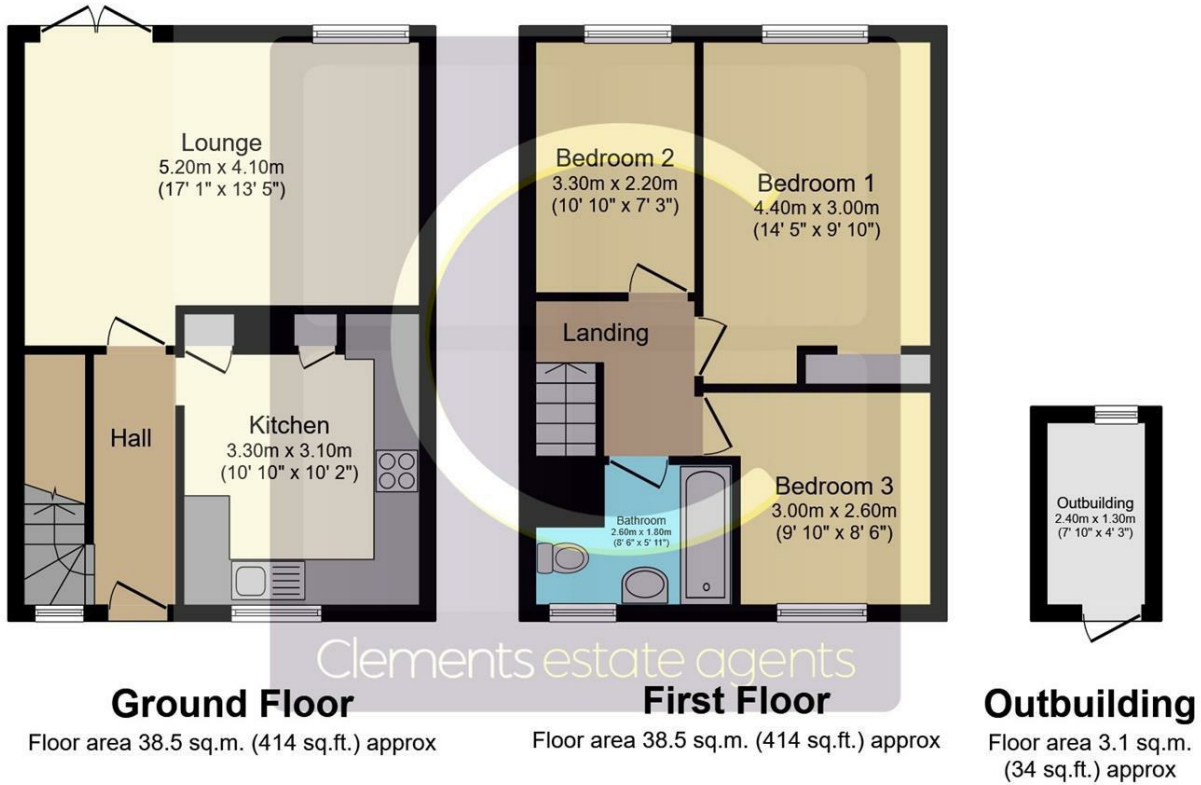


External Storage Cupboard

Rear Garden

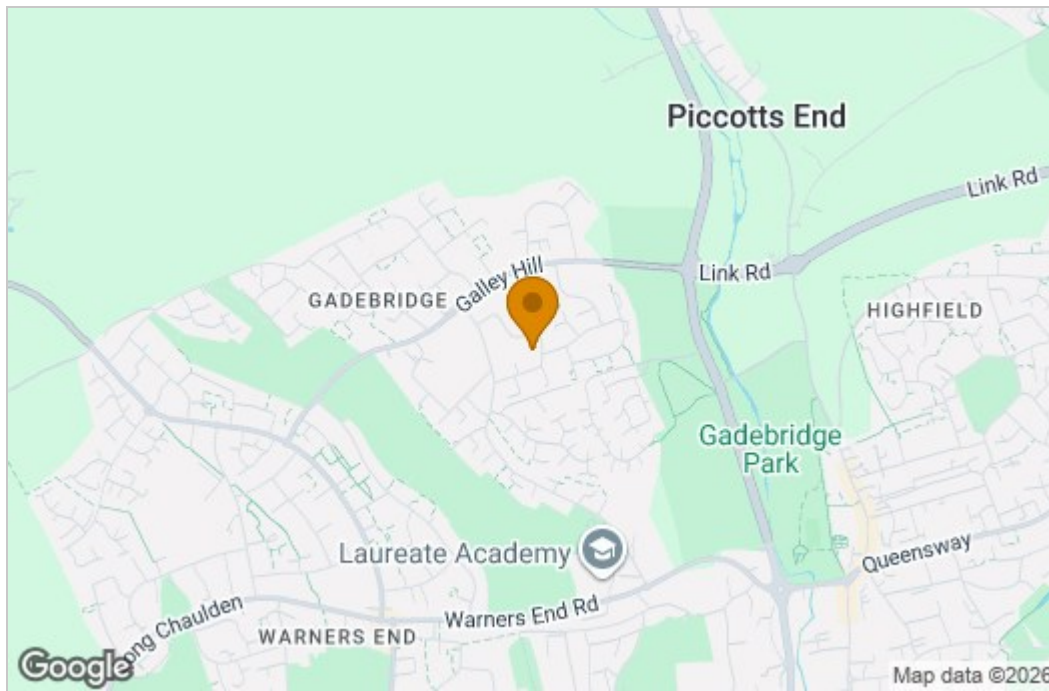


Floor Plan

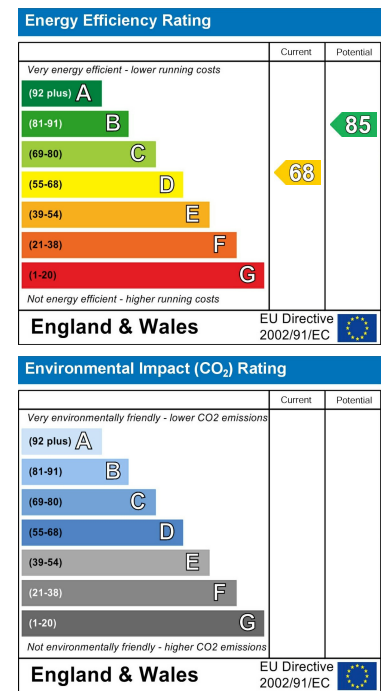


This Floor Plan is for illustration purposes only and may not be representative of the property. The position and size of doors, windows and other features are approximate. Unauthorized reproduction prohibited. © PropertyBOX

Area Map



Energy Efficiency Graph



These particulars, whilst believed to be accurate are set out as a general outline only for guidance and do not constitute any part of an offer or contract. Intending purchasers should not rely on them as statements of representation of fact, but must satisfy themselves by inspection or otherwise as to their accuracy. No person in this firm's employment has the authority to make or give any representation or warranty in respect of the property.