

# **Tithelands Harlow, CM19**

**£1,450 pcm**

**Beautifully Presented Two  
Bedroom Ground Floor Flat**







## Description

Hindwoods are delighted to offer to the market this well presented, two-bedroom ground floor maisonette. The property comprises of its own entrance door leading to two bedrooms, wet room, a good size lounge and modern fitted kitchen. The property is in the popular area of Katherines which is located a short drive to Harlow town centre, with access to Broxbourne train station or Epping tube. Close to all local amenities.

Accommodation comprises of:-

### Entrance Hall

Doors to all rooms plus storage cupboards.

Lounge 15' 2" x 13' 1" ( 4.62m x 3.99m )

Double glazed to front, with door leading to outdoor space, feature fireplace, wood floor and radiator.

Kitchen 9' 9" x 7' 7" ( 2.97m x 2.31m )

Double glazed window to rear, range of wall and base units with work surfaces over, sink with drainer unit, washing machine, fridge/freezer, integrated oven and hob and radiator.

Storage Cupboard 6' 3" x 4' 2" ( 1.91m x 1.27m )

Includes metres etc.

Bedroom 1 11' 3" x 9' 7" ( 3.43m x 2.92m )

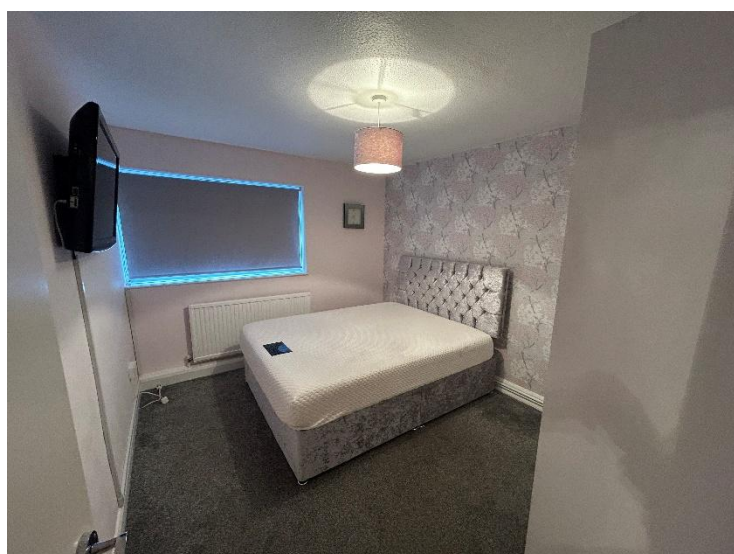
Double glazed window to front, radiator and carpet. Double bed, large wardrobes, with drawers, as well as wall mounted TV.

Bedroom 2 11' 4" x 6' 7" ( 3.45m x 2.01m )

Double glazed window to rear, radiator and carpet.

### Wet Room

Wet room with obscure double glazed window to front, wash hand basin and low level WC.



## For Viewings

d.distin@hindwoods.co.uk

