





Hiltons Estates is proud to present this luxurious two-bedroom, two-bathroom ground floor apartment within the prestigious Arber House at The Green Quarter. Extending to approximately 764 sq. ft., this beautifully appointed residence boasts a stunning open-plan living space, a bespoke designer kitchen with Silestone worktops and integrated Bosch appliances, and a private south-east facing patio. Finished to an exceptional standard throughout, the property also benefits from secure gated parking, a long lease of over 992 years, and exclusive access to first-class residents' amenities including a concierge, fully equipped gym, private cinema, and co-working lounge. Perfectly located moments from Southall Station and the Elizabeth Line, this outstanding home offers an enviable blend of luxury, comfort, and connectivity.

Luxurious two-bedroom, two-bathroom ground floor apartment

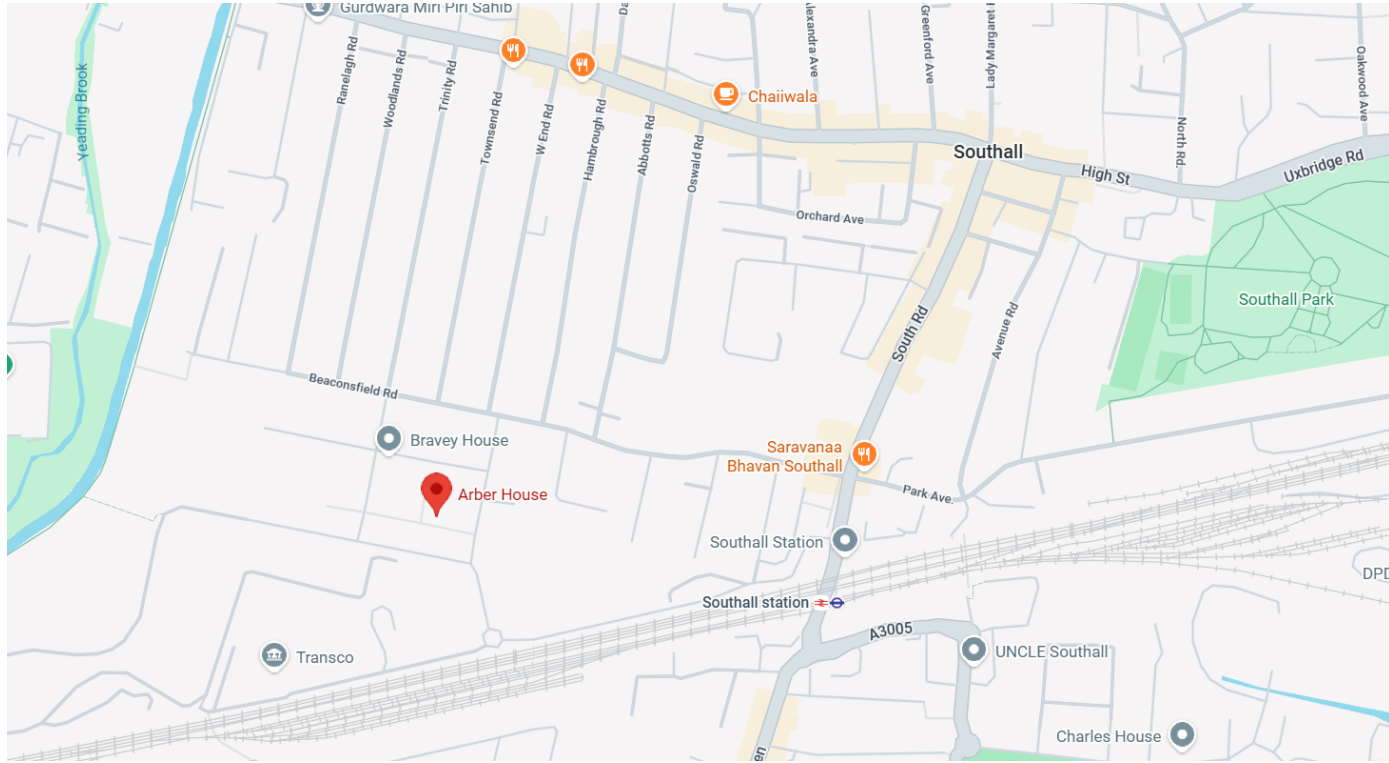
Approx. 764 sq. ft. of beautifully finished accommodation

Bespoke kitchen with Silestone worktops and Bosch appliances

Bright open-plan living area with private south-east facing patio

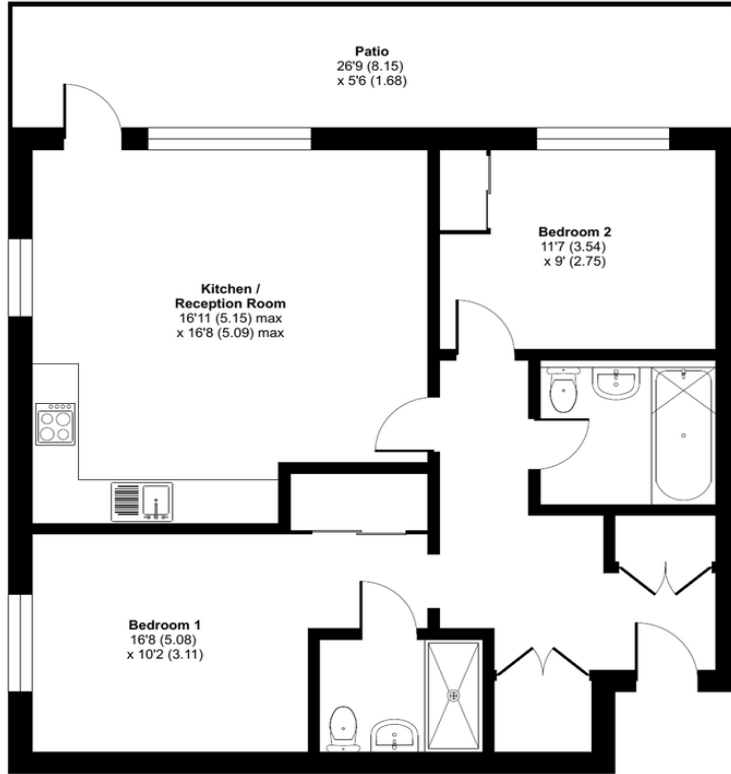
Principal bedroom with fitted wardrobes and ensuite





Arber House 2 Greenleaf Walk, Southall, UB1

Approximate Area = 764 sq ft / 70.9 sq m
For identification only - Not to scale



GROUND FLOOR



Score	Energy rating	Current	Potential
92+	A		
81-91	B	83 B	83 B
69-80	C		
55-68	D		
39-54	E		
21-38	F		
1-20	G		

Floor plan produced in accordance with RICS Property Measurement 2nd Edition, incorporating International Property Measurement Standards (IPMS2 Residential). © ntrhcom 2026. Produced for Benham & Reeves. REF: 1453091

**Hiltons Estates, 137 Western Road
Southall, UB2 5HN**

www.hiltons-estates.com
email: harvin@hiltons-estates.com
0208 867 9555 / 07961 527301

Agents Note: Whilst every care has been taken to prepare these sales particulars, they are for guidance purposes only. All measurements are approximate are for general guidance purposes only and whilst every care has been taken to ensure their accuracy, they should not be relied upon and potential buyers are advised to recheck the measurements.