

# Wild & Co.

wildandco.uk



## Morton Close, E1 2QT

1 DOUBLE BEDROOM APARTMENT WITH JULIETTE BALCONY.

This light & airy modern apartment is offered in excellent condition throughout and fully furnished.

Benefiting from: 1 double bedrooms, large open plan fitted kitchen, dining area onto lounge, bathroom/WC and private East facing Juliette balcony.

Great location situated in the middle of both Shadwell DLR and Whitechapel stations, giving you great access to both; City and Canary Wharf.

Available Now, from 1/6/26

**£2,000 Per Month |**

# Morton Close, E1 2QT



- 1 Double bedroom apartment
- Large open plan
- Offered Furnished
- Juliette balcony
- Fitted kitchen/dining area onto lounge
- Available Now, form 1/6/26
- Excellent condition throughout
- Moments to Shadwell DLR and Whitechapel stations

## Full Description

Wild & Co. are delighted to offer to Let this: 1 DOUBLE BEDROOM APARTMENT WITH JULIETTE BALCONY.

This light & airy modern apartment is offered in excellent condition throughout and fully furnished.

Benefiting from: 1 double bedroom, large open plan fitted kitchen/dining area onto lounge, bathroom/WC and private East facing Juliette balcony.

Great location situated in the middle of both Shadwell DLR and Whitechapel stations, giving you great access to both; City and Canary Wharf.

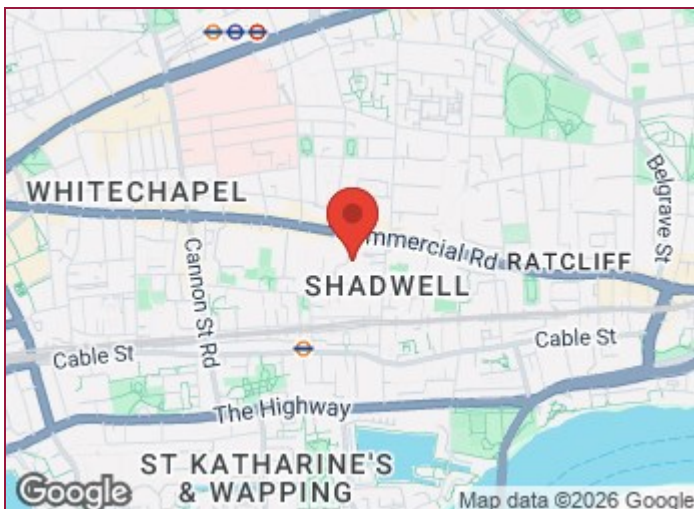
Offered Furnished, Available Now !

## Transport Links:

- Shadwell DLR Station - 4 minute walk
- Shadwell Overground Station - 4 minutes walk
- Limehouse DLR & Railway Station - 15 minutes walk
- Bank Underground Station - 9 minutes away

## Amenities:

- Watney Market - 2 minutes walk
- Commercial Road - 3 minutes walk
- Tesco Express - 6 minutes walk



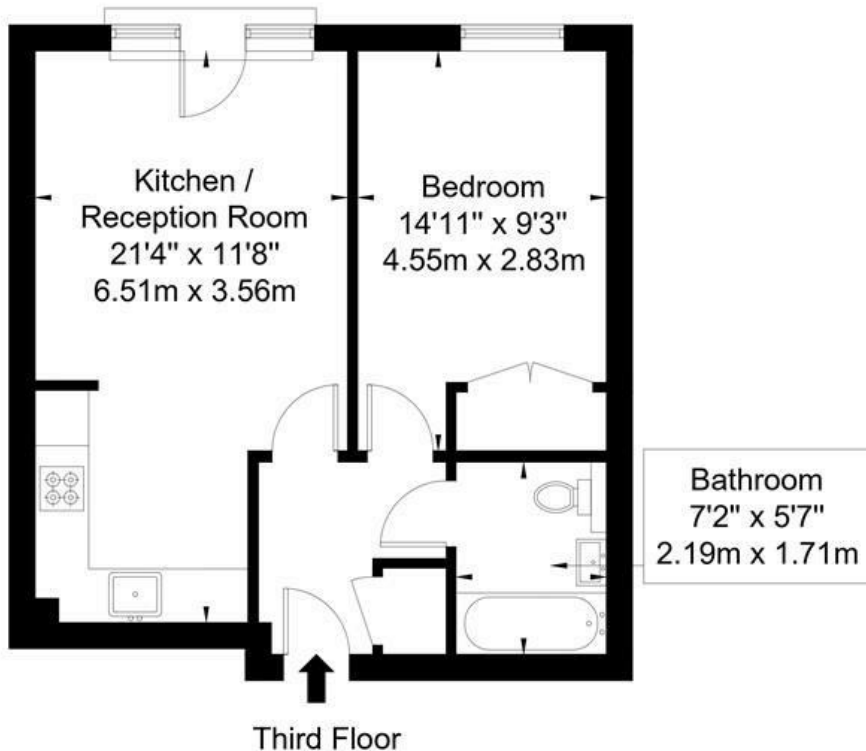
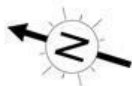
## Directions

Directly off Deancross Street



# Morton Close, E1 2QT

Approx Gross Internal Area = 43.4 sq m / 467 sq ft

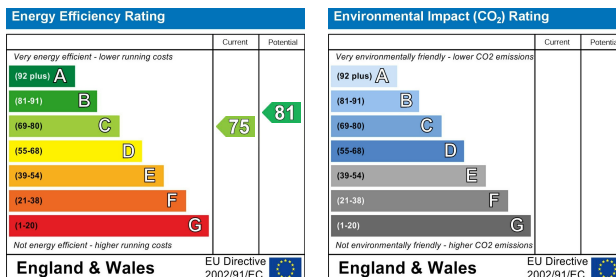


Ref :

Copyright **BLEUPLAN**

The Floor plan is not to scale and measurements and areas shown are approximate and therefore should be used for illustrative purposes only. The plan has been prepared in accordance with the RICS code of Measuring Practice and whilst we have confidence in the information produced it must not be relied on. If there is any aspect of particular importance, you should carry out or commission your own inspection of the property.

Copyright @ BLEUPLAN



These particulars, whilst believed to be accurate are set out as a general outline only for guidance and do not constitute any part of an offer or contract. Intending purchasers should not rely on them as statements of representation of fact, but must satisfy themselves by inspection or otherwise as to their accuracy. No person in this firm's employment has the authority to make or give any representation or warranty in respect of the property.