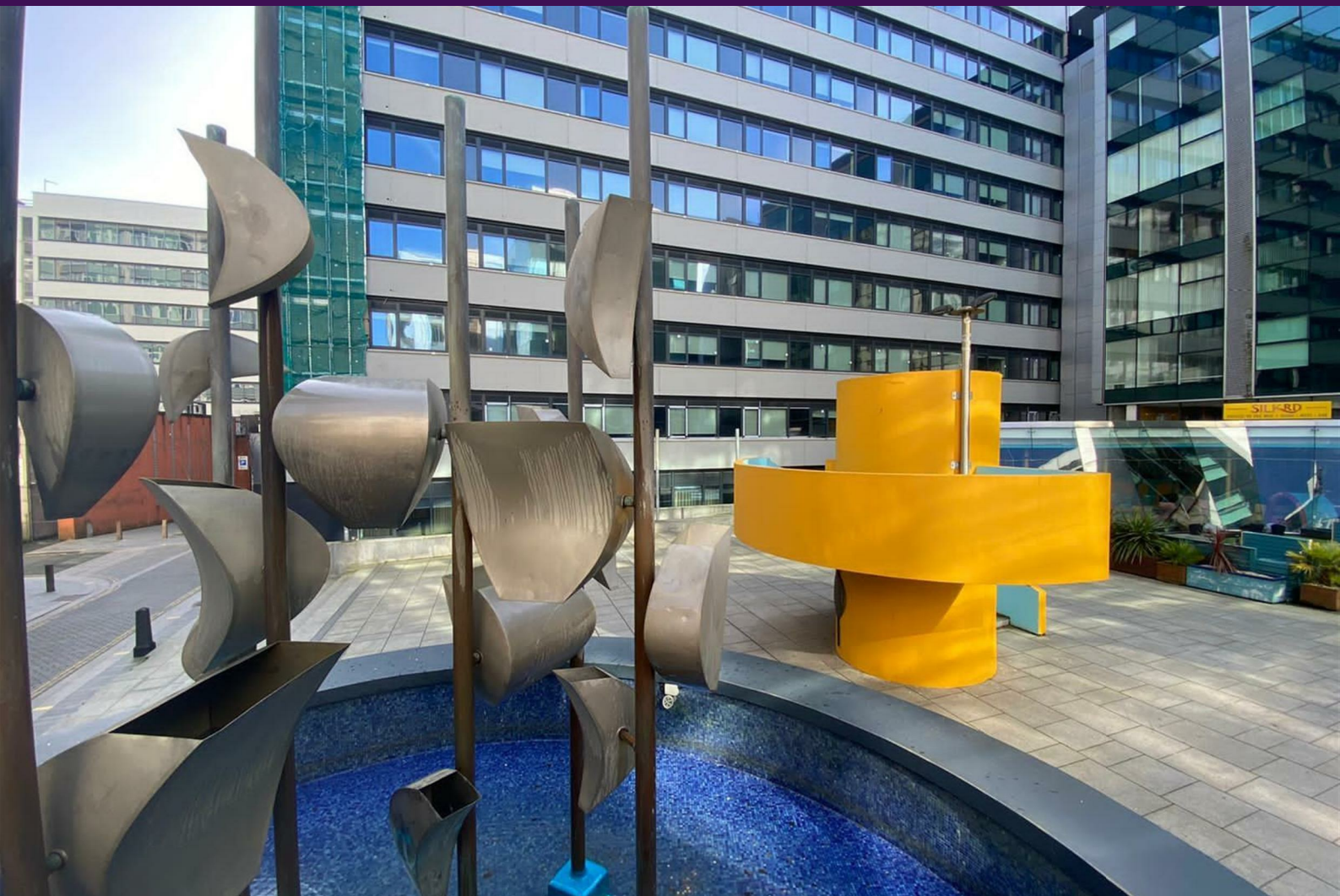


1A Old Haymarket 73-89 Victoria Street, Liverpool, L1 6AF
Tel: 0151 305 2577
Email: liverpoolsales@ascendproperties.com
www.ascendproperties.com

Ascend

Built on higher standards



The Strand, Drury Lane, Liverpool

£950 PCM

Available 27th January 2025

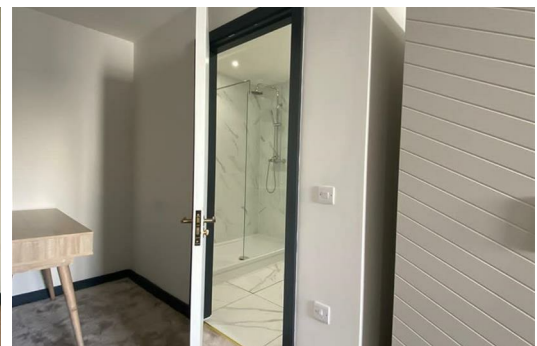
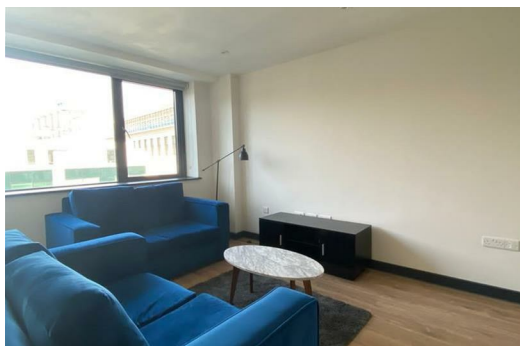
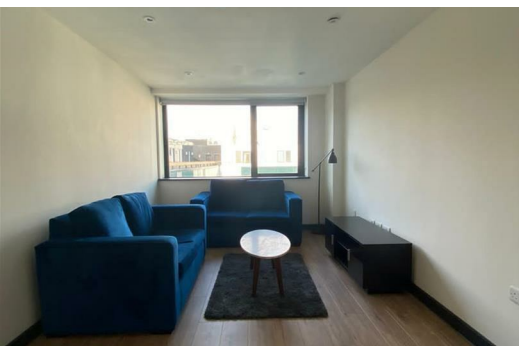
A magnificent One bedroom Apartment in a wonderful location, situated in Liverpool L2, offering amazing comfortable living and convenience with simplicity.

The Apartment is presented in outstanding condition and fitted with all the basic facilities like: 24 hour private gym, Close to public transport, Concierge, Double glazing, Fitted Kitchen, Fully furnished to high spec, Intercom entry system, Premium City Centre location, Shops and amenities nearby.

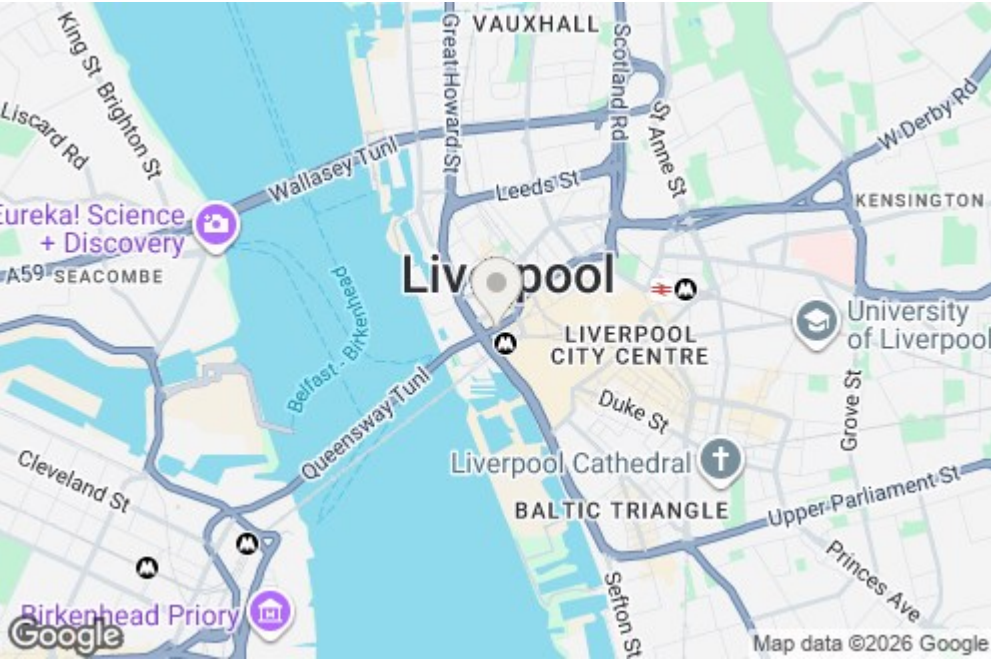
An early viewing is highly recommended to avoid disappointment.

Images are for marketing purposes only.

12 Month tenancy. Council Tax Band A. Deposit £1,090. Available 10th March 2026.



22 Strand Plaza Drury Lane, Liverpool, Merseyside, L2 0PH



Energy Efficiency Rating		Environmental Impact (CO ₂) Rating	
Very energy efficient - lower running costs	Best	Very environmentally friendly - lower CO ₂ emissions	Best
100-105 kWh/m ² /year	A	100-105 g/kWh	A
81-100 kWh/m ² /year	B	81-100 g/kWh	B
61-80 kWh/m ² /year	C	61-80 g/kWh	C
41-60 kWh/m ² /year	D	41-60 g/kWh	D
21-40 kWh/m ² /year	E	21-40 g/kWh	E
1-20 kWh/m ² /year	F	1-20 g/kWh	F
1 kWh/m ² /year or less	G	1 g/kWh or less	G
Very energy efficient - higher running costs	Worst	Very environmentally friendly - higher CO ₂ emissions	Worst