



1 Staddle Stones New Road, Princes Risborough - HP27 0JJ

In Excess of OIEO £195,000

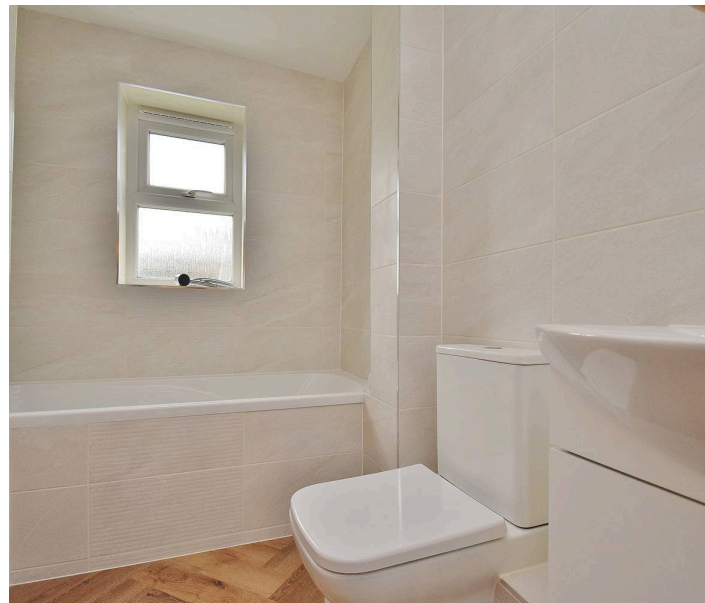
 **TIM RUSS**
& Company



1 Staddle Stones New Road

Princes Risborough, Princes Risborough

- One bedroom
- Ground floor
- Recently refurbished
- Modern Kitchen
- Bathroom



1 Staddle Stones New Road

Princes Risborough, Princes Risborough

Conveniently located 1-bed ground floor flat with open plan kitchen/reception room, refurbished, bedroom with wardrobes, modern bathroom, residents parking, communal garden, extended lease.

Situated in the most convenient location a short level stroll to shops and amenities is this one bedroom ground floor flat offered with no onward chain. The property has undergone full refurbishment by the current owner.

The accommodation comprises its own front door to an open plan kitchen/reception room with a hallway benefitting from storage cupboards, leading to the bedroom with wardrobes and bathroom fitted in a white suite. The property offers double glazing.

There is residents parking to the front and communal garden to the rear.

This property will be sold with an extended lease.

Council Tax band: C

Tenure: Leasehold

EPC Energy Efficiency Rating: E

EPC Environmental Impact Rating: E





Tim Russ and Company

Tim Russ Ltd, 1 High Street - HP27 0AE

01844 275522 • p.risborough@timruss.co.uk • timruss.co.uk/



TIM RUSS
& Company