



**Premier  
Properties**  
Perth



## 14 James Street, Perth, PH1 4NY Offers Over £329,950



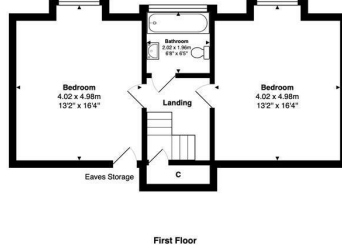
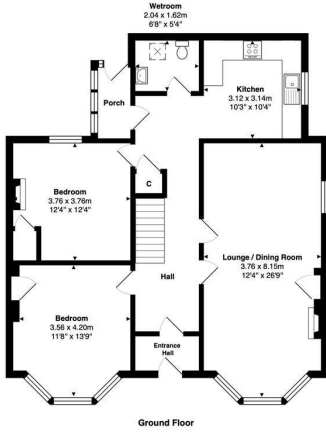
Presented over two levels and offered in true move-in condition, this charming home comprises a welcoming entrance vestibule and hallway leading through to the spacious family lounge/dining area — the perfect space for both relaxing and entertaining. This inviting room is further enhanced by a log-burning stove, providing warmth and character during the colder months. The ground floor also features a newly fitted kitchen with integrated appliances, a wet room, and two generously sized double bedrooms.

The upper level offers two further excellent-sized bedrooms along with a stylish contemporary bathroom. The property also benefits from fantastic storage solutions throughout.

Occupying an extensive plot, the property enjoys generous garden grounds to both the front and rear, predominantly laid to lawn, along with a gravelled driveway providing off-street parking for multiple vehicles. In addition, there is a substantial outbuilding which would make an ideal workshop, garage, or versatile additional storage space.

- Four Bedrooms
- Oil Heating
- Double Glazing
- Large Garden
- Sought-After Location
- Close To Local Amenities
- Log Burning Stove
- Off Street Parking





Energy Efficiency Rating	
Current	Potential
Very energy efficient - lower running costs	
(92 plus) <b>A</b>	
(81-91) <b>B</b>	
(69-80) <b>C</b>	
(55-68) <b>D</b>	
(38-54) <b>E</b>	<b>67</b>
(21-38) <b>F</b>	<b>44</b>
(1-20) <b>G</b>	
Not energy efficient - higher running costs	
<b>Scotland</b>	EU Directive 2002/91/EC

Environmental Impact (CO <sub>2</sub> ) Rating	
Current	Potential
Very environmentally friendly - lower CO <sub>2</sub> emissions	
(92 plus) <b>A</b>	
(81-91) <b>B</b>	
(69-80) <b>C</b>	
(55-68) <b>D</b>	
(38-54) <b>E</b>	<b>60</b>
(21-38) <b>F</b>	<b>42</b>
(1-20) <b>G</b>	
Not environmentally friendly - higher CO <sub>2</sub> emissions	
<b>Scotland</b>	EU Directive 2002/91/EC



These particulars, whilst believed to be accurate are set out as a general outline only for guidance and do not constitute any part of an offer or contract. Intending purchasers should not rely on them as statements of representation of fact, but must satisfy themselves by inspection or otherwise as to their accuracy. No person in this firm's employment has the authority to make or give any representation or warranty in respect of the property.