



Greenland Quay

London, SE16

Asking Price £850,000

Four bedroom house over three floors with private garden, undergoing full refurbishment. Set within popular Greenland Quay, close to scenic docks, Surrey Quays shopping, and excellent transport links into central London.

CHESTERTONS



Greenland Quay

London, SE16

- Four bedroom house over three floors
- Private rear garden ideal for families
- Recent refurbishment
- Set within popular Greenland Quay development
- Beautiful dockside setting with peaceful surroundings
- Close to Surrey Quays shopping centre
- Excellent transport links from Canada Water



A spacious four bedroom house arranged over three floors, set within the sought after Greenland Quay development, moments from the water's edge. The property benefits from a recent refurbishment, creating a stylish and contemporary finish ideal for both families and investors.

Greenland Quay is known for its peaceful dockside setting, offering attractive views and a calm environment rarely found so close to central London. Residents enjoy the beauty of the surrounding docks, with scenic walkways and open green spaces perfect for relaxing or exercising along the water. The location offers excellent convenience, with Surrey Quays Shopping Centre nearby providing a range of supermarkets, cafés and everyday amenities. Canada Water is also within easy reach, offering further retail options, restaurants and leisure facilities. For transport, Surrey Quays Overground and Canada Water Jubilee line stations provide swift connections into Canary Wharf, London Bridge and the City, making this an ideal base for commuters.

This is a superb opportunity to acquire a well located home in a popular riverside community with strong long term appeal.

Tenure: Freehold
Service Charge: £0
Ground Rent: £0
Local Authority: London Borough of Southwark
Council Tax Band: F

Score	Energy rating	Current	Potential
92+	A		
81-91	B		86 B
69-80	C	72 C	
55-68	D		
39-54	E		
21-38	F		
1-20	G		

Chestertons Surrey Quays Sales

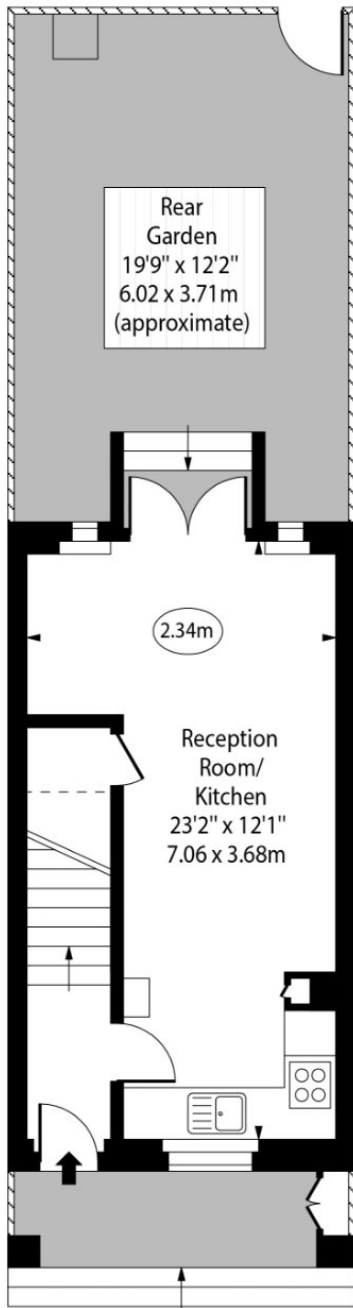
2 Plough Way
 London
 SE16 2EU

+44 (0)20 7378 0644
 chestertons.co.uk

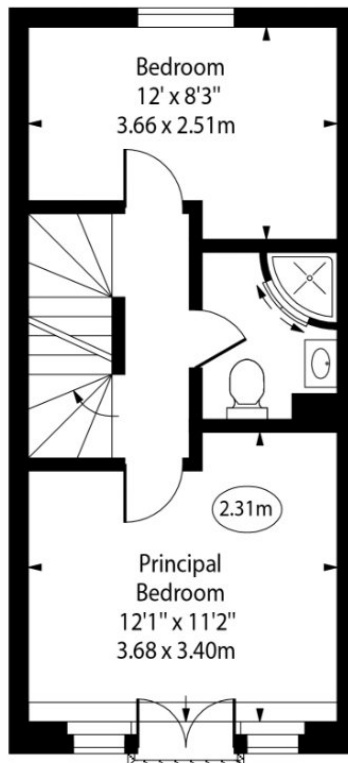
Greenland Quay, SE16



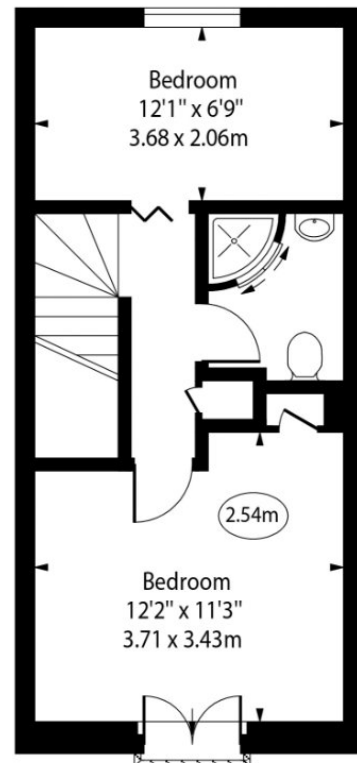
○ - Ceiling Height



Ground Floor



First Floor



Second Floor

Approx Gross Internal Area 934 Sq Ft - 86.77 Sq M

Every attempt has been made to ensure the accuracy of the floor plan shown. However, all measurements, fixtures, fittings, and data shown are approximate interpretations and for illustrative purposes only.

Measured according to the RICS IPMS 2. Not To Scale.

www.goldlens.co.uk

Ref. No. 027984K

