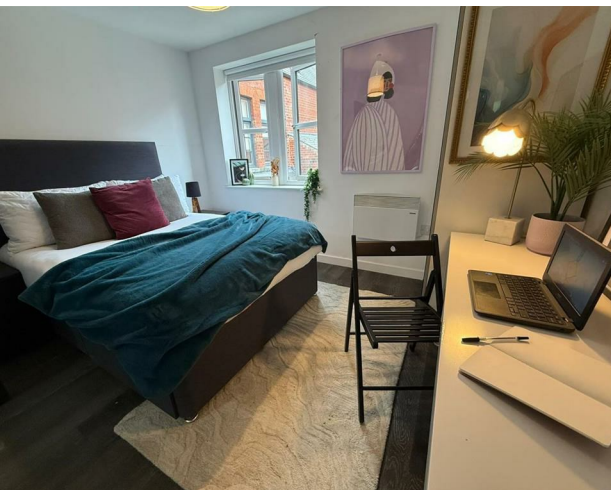
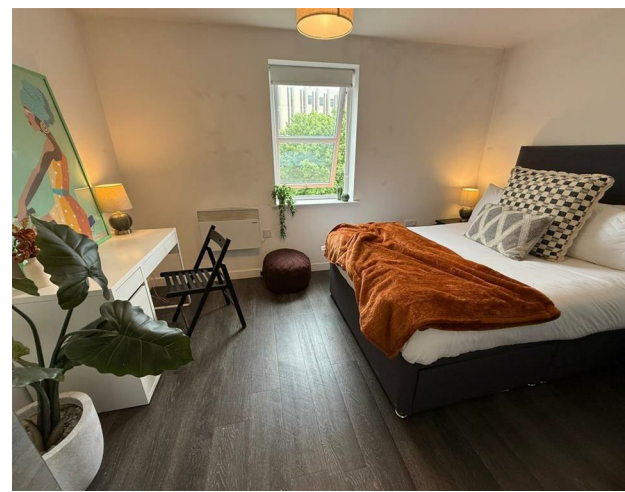
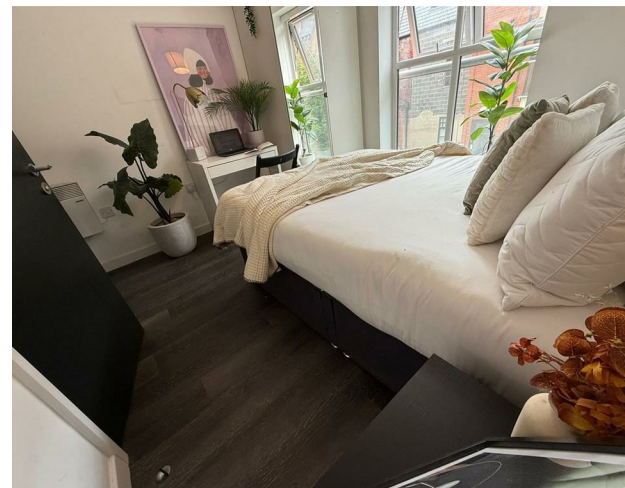


Flat 4, 20A Hyde Terrace, Leeds, West Yorkshire, LS2 9LN
£3,250 Per month

V&L
PROPERTIES



Flat 4, 20A Hyde Terrace, Leeds, West Yorkshire, LS2 9LN

£3,250 Per month

Council Tax Band: Exempt

Available for 1st July

Property Features:

Spacious and well-presented reception room, ideal for relaxing or entertaining

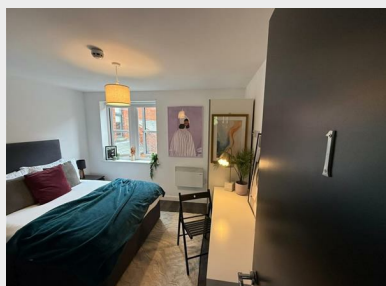
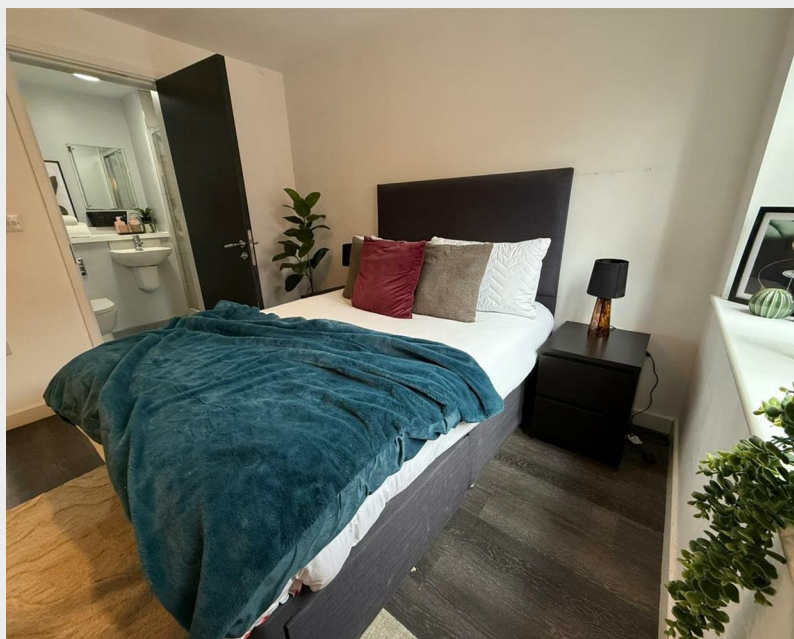
Living room includes a 50-inch TV

Comfortable private bedroom offering both privacy and practicality

Modern en-suite bathroom for added convenience

Modern fitted kitchen with practical storage and workspace





22 Regent Street
 Leeds
 LS2 7QA
 01133 225737
info@vgl-properties.co.uk
vgl-properties.co.uk

