



**Connells**

Hilltop Close  
Rayleigh



## Property Description

A beautifully modernised Byford-designed three-bedroom semi-detached property in one of Rayleigh's most desirable locations.

Set within a peaceful cul-de-sac just a short stroll from Rayleigh High Street, shops, and the mainline train station, this charming home perfectly combines modern living with original character. Thoughtfully upgraded by the current owners, the property offers stylish décor, excellent living space, and a layout ideal for both families and professionals.

As you step inside, the welcoming hallway is illuminated by a beautiful feature stained-glass window that floods the area with natural light, setting the tone for the rest of this impressive home. The heart of the property is the stunning open-plan kitchen/dining area — a superb space for entertaining, family meals, or simply catching up at the end of the day.

To the front of the home, a dedicated study provides the perfect workspace for those working remotely and benefits from its own separate W/C. The spacious lounge offers a cosy retreat for relaxing at the weekend or unwinding with the family.

Upstairs, the owners have reconfigured the layout to maximise comfort and practicality. The large family bathroom has been beautifully designed and includes a separate

shower, while all three bedrooms offer excellent proportions and improved storage solutions.

Outside, the landscaped rear garden is a real highlight — ideal for summer gatherings, children to play, or simply enjoying the peace

A beautifully modernised Byford-designed three-bedroom semi-detached property in one of Rayleigh's most desirable locations.

Set within a peaceful cul-de-sac just a short stroll from Rayleigh High Street, shops, and the mainline train station, this charming home perfectly combines modern living with original character. Thoughtfully upgraded by the current owners, the property offers stylish décor, excellent living space, and a layout ideal for both families and professionals.

As you step inside, the welcoming hallway is illuminated by a beautiful feature stained-glass window that floods the area with natural light, setting the tone for the rest of this impressive home. The heart of the property is the stunning open-plan kitchen/dining area — a superb space for entertaining, family meals, or simply catching up at the end of the day.

To the front of the home, a dedicated study provides the perfect workspace for those working remotely and benefits from its own separate W/C. The spacious lounge offers a cosy retreat for relaxing at the weekend or

unwinding with the family.

Upstairs, the owners have reconfigured the layout to maximise comfort and practicality. The large family bathroom has been beautifully designed and includes a separate shower, while all three bedrooms offer excellent proportions and improved storage solutions.

Outside, the landscaped rear garden is a real highlight — ideal for summer gatherings. children to play, or simply enjoying the peace

A beautifully modernised Byford-designed three-bedroom semi-detached property in one of Rayleigh's most desirable locations.

Set within a peaceful cul-de-sac just a short stroll from Rayleigh High Street, shops, and the mainline train station, this charming home perfectly combines modern living with original character. Thoughtfully upgraded by the current owners, the property offers stylish décor, excellent living space, and a layout ideal for both families and professionals.

As you step inside, the welcoming hallway is illuminated by a beautiful feature stained-glass window that floods the area with natural light, setting the tone for the rest of this impressive home. The heart of the property is the stunning open-plan kitchen/dining area — a superb space for entertaining, family meals, or simply catching up at the end of the day.

To the front of the home, a dedicated study provides the perfect workspace for those

working remotely and benefits from its own separate W/C. The spacious lounge offers a cosy retreat for relaxing at the weekend or unwinding with the family.

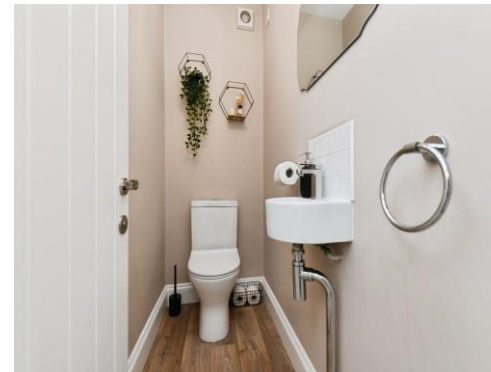
Upstairs, the owners have reconfigured the layout to maximise comfort and practicality. The large family bathroom has been beautifully designed and includes a separate shower, while all three bedrooms offer excellent proportions and improved storage solutions.

Outside, the landscaped rear garden is a real highlight — ideal for summer gatherings. children to play, or simply enjoying the peace

A beautifully modernised Byford-designed three-bedroom semi-detached property in one of Rayleigh's most desirable locations.

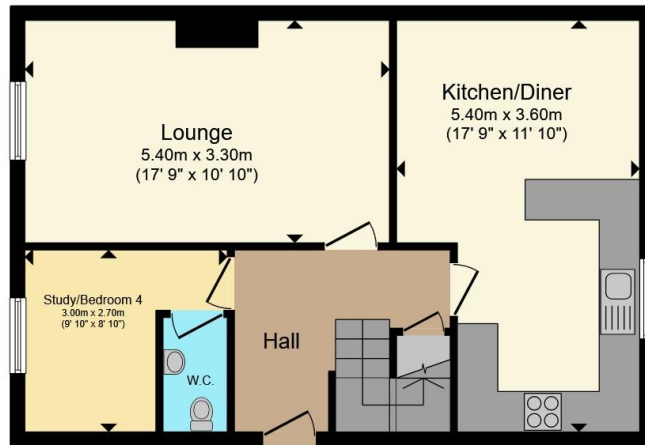
Set within a peaceful cul-de-sac just a short stroll from Rayleigh High Street, shops, and the mainline train station, this charming home perfectly combines modern living with original character. Thoughtfully upgraded by the current owners, the property offers stylish décor, excellent living space, and a layout ideal for both families and professionals.

As you step inside, the welcoming hallway is illuminated by a beautiful feature stained-glass window that floods the area with natural light, setting the tone for the rest of this impressive home. The heart of the property is the stunning open-plan kitchen/dining area — a superb space for entertaining, family meals, or simply catching up at the end of the day.

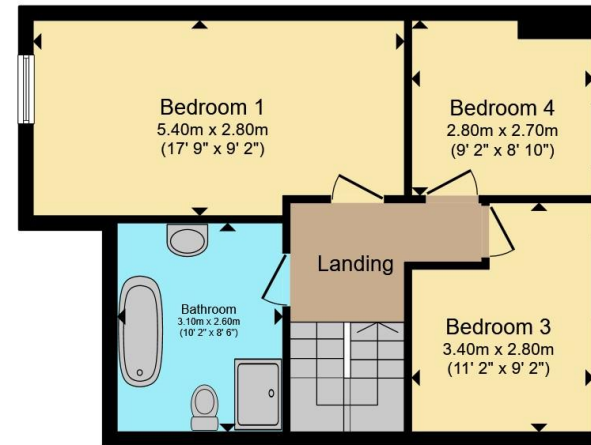








**Ground Floor**



**First Floor**

Total floor area 102.1 m<sup>2</sup> (1,100 sq.ft.) approx

This floor plan is for illustrative purposes only. It is not drawn to scale. Any measurements, floor areas (including any total floor area), openings and orientation are approximate. No details are guaranteed, they cannot be relied upon for any purpose and they do not form part of any agreement. No liability is taken for any error, omission or misstatement. A party must rely upon its own inspection(s). Powered by www.propertybox.io



To view this property please contact Connells on

**T 01268 777 767**  
**E rayleigh@connells.co.uk**

113-115 High Street  
 RAYLEIGH SS6 7QA

EPC Rating: C Council Tax  
 Band: D

Tenure: Freehold

**view this property online [connells.co.uk/Property/RAY309121](http://connells.co.uk/Property/RAY309121)**



1. MONEY LAUNDERING REGULATIONS Intending purchasers will be asked to produce identification documentation at a later stage and we would ask for your co-operation in order that there will be no delay in agreeing the sale. 2. These particulars do not constitute part or all of an offer or contract. 3. The measurements indicated are supplied for guidance only and as such must be considered incorrect. Potential buyers are advised to recheck measurements before committing to any expense. 4. We have not tested any apparatus, equipment, fixtures, fittings or services and it is in the buyers interest to check the working condition of any appliances.

Connells Residential is registered in England and Wales under company number 1489613, Registered Office is Cumbria House, 16-20 Hockliffe Street, Leighton Buzzard, Bedfordshire, LU7 1GN. VAT Registration Number is 500 2481 05.

**See all our properties at [www.connells.co.uk](http://www.connells.co.uk) | [www.rightmove.co.uk](http://www.rightmove.co.uk) | [www.zoopla.co.uk](http://www.zoopla.co.uk)**

Property Ref: RAY309121 - 0003