

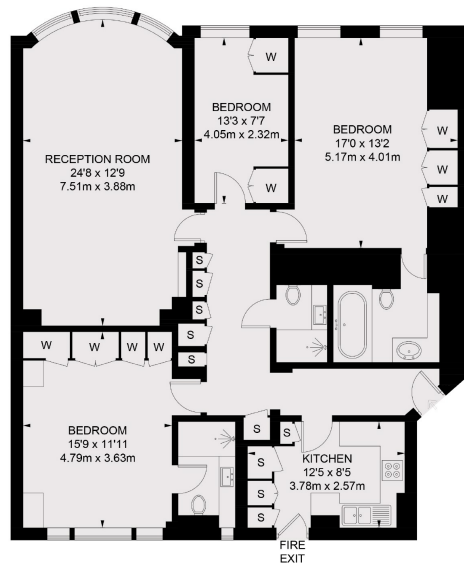


# Upper Grosvenor Street

Mayfair W1K



This well presented second floor apartment boasts three bedrooms, three bathrooms, separate kitchen, generous reception room with a large bay window and air-conditioning throughout. The building also benefits from a lift and porter.



TOTAL APPROX. FLOOR AREA 1318 SQ. FT. (122.5 SQ. M.)

Set within the prestigious Eaton House in the heart of Mayfair, this well presented second-floor apartment offers refined living in one of London's most sought-after addresses.

Measuring approximately 1,262 sq ft, the property is thoughtfully arranged to combine modern comforts with timeless elegance. The apartment features a generous living room filled with natural light, a separate fully fitted kitchen, and three well-proportioned bedrooms, each with its own en-suite bathroom, ensuring both comfort and privacy.

#### FEATURES

- Three Bedrooms
- Three Bathrooms
- 24 hr Uniformed Porter
- Wooden Flooring
- Lift Access
- Excellent Location

Price: £2,000 Per week

We aim to make our particulars both accurate and reliable. However they are not guaranteed; nor do they form part of an offer or contract. If you require clarification on any points then please contact us, especially if you're traveling some distance to view. Please note that appliances and heating systems have not been tested and therefore no warranties can be given as to their working order. Energy Rating: C

Grosvenor Square is located to the east of Hyde Park and to the north of Piccadilly. The property is within reach of the many amenities, restaurants and flagship designer stores offered by Mount Street, New Bond Street and their surrounding areas.



**WETHERELL**  
MAYFAIR'S FINEST PROPERTIES

102 Mount Street • London • W1K 2TH  
T: 020 7529 5588 E: [rentals@wetherell.co.uk](mailto:rentals@wetherell.co.uk)

[wetherell.co.uk](http://wetherell.co.uk)

NO ONE KNOWS MAYFAIR BETTER THAN WETHERELL