



Thorndown Lane, Windlesham

£730,000



Thorndown Lane, Windlesham

Located centrally in Windlesham village this modern five bedroom detached home with accommodation over three floors is presented with modern décor throughout.

FEATURES

- Walking distance to village shops
- No onward chain
- Double glazing
- Gas central heating
- Easy access to junction 3 of the M3
- Built in wardrobes
- Accommodation on three floors

ACCOMMODATION

- Entrance hall
- Downstairs cloakroom
- Two reception rooms
- Spacious Kitchen
- Four first floor bedrooms
- Two bath/shower rooms
- Further top floor room

OUTSIDE

- Driveway parking
- South easterly facing rear garden with patio
- Garage

EPC RATING

C

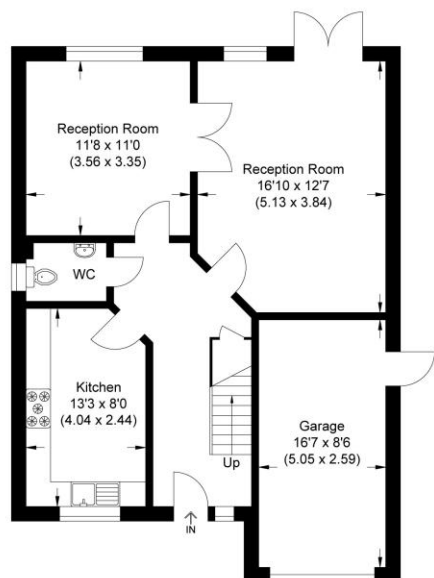
LOCAL AUTHORITY/COUNCIL TAX

Surrey Heath – Band F

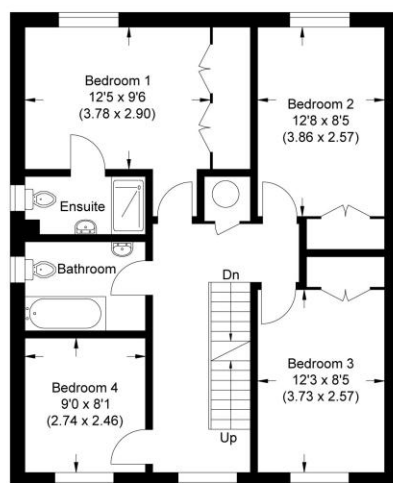




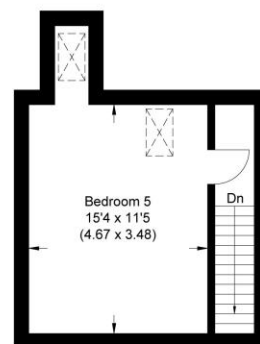
Approximate Gross Internal Area
155.10 sq m / 1669.48 sq ft
(Excludes Garage)
Garage Area 13.08 sq m / 140.79 sq ft



Ground Floor



First Floor



Second Floor

Illustration for identification purposes only, measurements are approximate, not to scale.

Disclaimer: We wish to inform prospective purchasers that we have prepared these sales particulars as a general guide. We have not carried out a detailed survey, nor tested the services, appliances and specific fittings. Room sizes are approximate and rounded; they are taken between internal wall surfaces and therefore include cupboards / shelves, etc. Accordingly, they should not be relied upon for carpeting, curtains / blinds and kitchen equipment, whether fitted or not, are deemed removable by the vendor unless specifically itemized within these.

Postcode for sat nav: **GU20 6DD**



NEWTON ROWE
SALES & LETTINGS

The Old Dairy, 7 Updown Hill, Windlesham, Surrey GU20 6AF
enquiries@newtonrowe.co.uk | 01276 986900