



## Milton Road, SW19

£1,750 Per calendar month

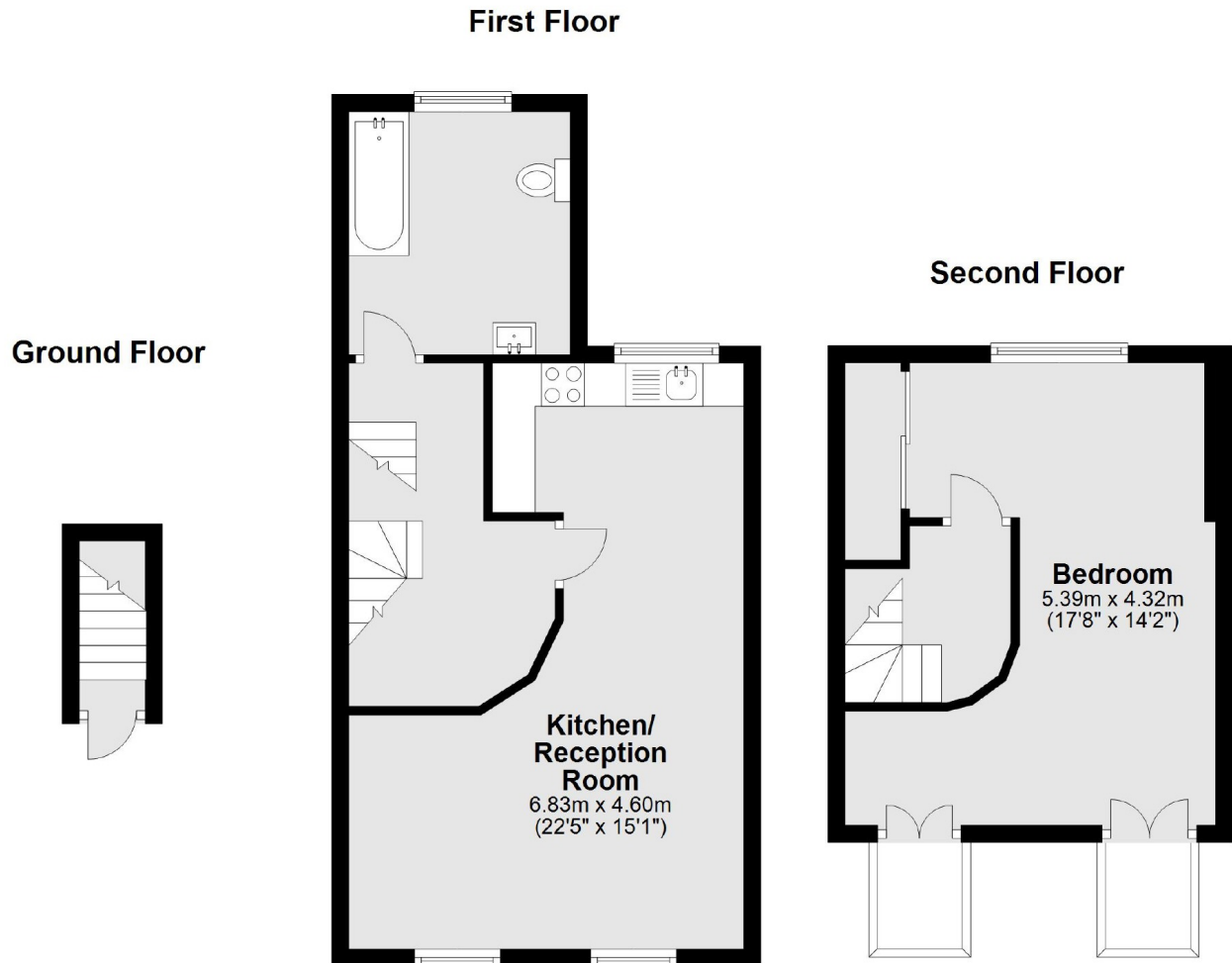
A one bedroom conversion apartment, split over the first and second floor, offering an open plan living room/kitchen, large bathroom and additional storage in the eves.

Milton Road is a popular residential street located off Haydons Road, Garfield Road Recreation Ground is around the corner and so is Haydons Road station.

### Features

- One Bedroom
- Split Level
- First and Second Floor
- Large Bathroom
- Quiet Road
- Conversion

# Milton Road, London, SW19



Total area: approx. 63.8 sq. metres (686.6 sq. feet)