



Dover Street | Mayfair | London | W1S

Asking Price - £4,600 Per month



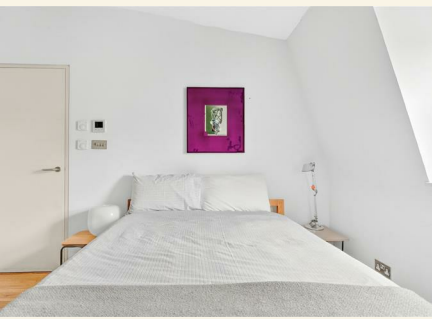
- 1 Spacious Bedroom
- Porter / Security
- Separate Kitchen
- Near Local Amenities
- Flooded With Natural Light
- Prime Central London
- Air Conditioning
- Close to Transport Links
- Secure Entry System
- Contemporary Apartment

Positioned on the prestigious Dover Street in the heart of Mayfair, this beautifully presented one-bedroom apartment offers a refined blend of contemporary comfort and prime central London living.

The property comprises a well proportioned reception room, thoughtfully designed for both relaxation and entertaining, together with a spacious double bedroom that provides a calm and private retreat. The apartment further benefits from a sleek modern bathroom finished to a high standard, air conditioning throughout for year round comfort, and porter / security for added convenience. The layout has been carefully considered to maximise both space and functionality throughout.

Dover Street sits at the center of Mayfair, moments from the world class amenities of Bond Street, Piccadilly and Berkeley Square. The area

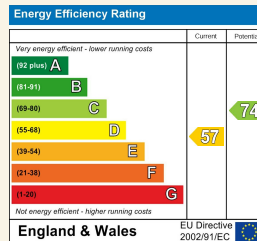




is defined by its luxury boutiques, fine dining restaurants, private members' clubs and renowned art galleries. Excellent transport links are within easy reach, including Green Park (Jubilee, Piccadilly and Victoria lines) and Piccadilly Circus (Bakerloo and Piccadilly lines) stations, providing swift connectivity across London



Council Tax Band **F** EPC Rating **D**



24 Bristol Gardens  
 London  
 W9 2JQ  
 hello@draperlondon.com  
 0203 143 1900