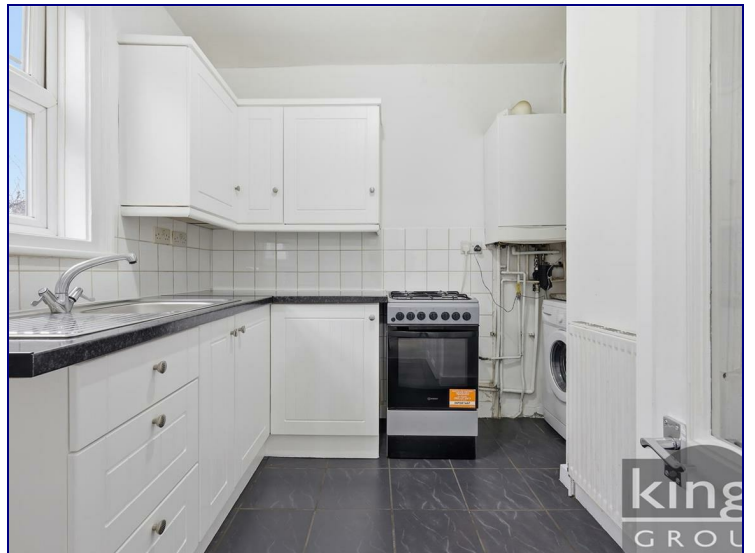


Napier Road, London, N17 6YH



Offers In Excess Of £350,000

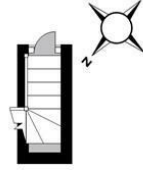
Kings Group are delighted to present this immaculately presented two-bedroom first-floor period conversion, benefiting from a private rear garden.

The property retains a number of charming original features and offers well-proportioned accommodation throughout, including two generous double bedrooms, a spacious three-piece bathroom suite, and a bright and airy fitted kitchen which opens into a dining and living area, creating an ideal space for both relaxing and entertaining. This property represents an excellent opportunity for both first-time buyers and investors and is offered chain free.

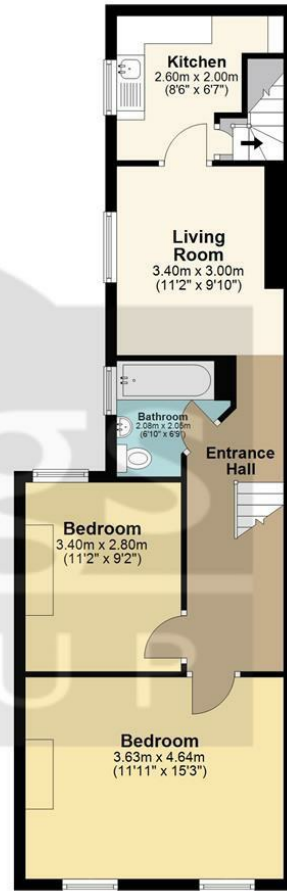
Situated in the heart of Tottenham, the property is conveniently located just 0.3 miles from Bruce Grove Overground Station, providing direct connections to the Victoria Line at Seven Sisters as well as services into Liverpool Street Station. A wide range of local amenities, schools, shops, and restaurants are all within close proximity, alongside excellent bus links offering easy access to the surrounding areas and Central London.



Ground Floor



First Floor



Total area: approx. 62.0 sq. metres (666.9 sq. feet)

All measurements have been taken as a guide to prospective buyers only and are not precise. This plan is for illustrative purposes only and no responsibility for any error, omission or misstatement. The services, systems and appliances shown have not been tested and no guarantee as to their operability or efficiency can be given. Measurements may have been taken from the widest area and may include wardrobe/cupboard space. No guarantee is given to any measurements including total areas. Buyers are advised to take their own measurements.

© @modphotouk | www.modphoto.co.uk
Plan produced using PlanUp. □

Napier Road

Energy Efficiency Rating

	Current	Potential
Very energy efficient - lower running costs		
(92 plus) A		
(81-91) B		
(69-80) C		
(55-68) D		
(39-54) E		
(21-38) F		
(1-20) G		
Not energy efficient - higher running costs		
England & Wales	EU Directive 2002/91/EC	

Environmental Impact (CO₂) Rating

	Current	Potential
Very environmentally friendly - lower CO ₂ emissions		
(92 plus) A		
(81-91) B		
(69-80) C		
(55-68) D		
(39-54) E		
(21-38) F		
(1-20) G		
Not environmentally friendly - higher CO ₂ emissions		
England & Wales	EU Directive 2002/91/EC	

