



6 Beaumont Cottage Oxford Road, Windsor, SL4 5DY
Offers in excess of £450,000

 **HORLER**

6 Beaumont Cottage Oxford Road, Windsor, SL4 5DY

A beautifully presented two bedroom Victorian end of terrace home, further enhanced by a loft room with views towards Windsor Castle. The property also offers a private courtyard garden and the benefit of access to an adjacent driveway providing off road parking. Offered for sale with a complete onward chain.



Property description.

Located in a tranquil no-through road on Oxford Road, Windsor, this charming two-bedroom Victorian villa presents a delightful opportunity for those seeking a blend of period elegance and modern convenience. The property boasts a well-appointed reception room, perfect for relaxation or entertaining guests, alongside two comfortable bedrooms that offer a peaceful retreat.

The bathroom is thoughtfully designed, ensuring functionality and comfort. A notable feature of this home is the newly installed Ariston heat source heat pump, which enhances energy efficiency while providing warmth throughout the seasons. The property also benefits from designated parking for one vehicle, a valuable asset in this desirable area.

At the rear, you will find a quaint courtyard, ideal for enjoying the outdoors or hosting small gatherings. The current owners have maintained the property to a high standard, showcasing an array of period features that add character and charm.

Situated in an incredible town centre location, this home offers easy access to local amenities, shops, and transport links, making it a perfect choice for both families and professionals alike. With a complete onward chain, this property is ready for its new owners to move in without delay.

This is an opportunity not to be missed for those looking to secure a lovely home in a sought-after area of Windsor.

Council Tax band D.

Legal Note.

Although these particulars are thought to be materially correct their accuracy cannot be guaranteed and they do not form part of any contract

Room layouts have been changed recently so pictures are for illustration purposes only.

New EPC incoming!

Vendors Comments.

"We have absolutely loved living in our Victorian

cottage right in the heart of Windsor. It has been such a special home for us. Having our own driveway here has always felt like a real luxury, and being able to walk to the station in just a few minutes has made everyday life so easy.

Some of our favourite moments have been upstairs in the loft, watching the light change over Windsor Castle and catching the sunsets. Downstairs, the open fireplace has made winters feel cosy and calm, and the house as a whole has always felt warm and welcoming.

We have also really valued being so close to everything. Morning walks by the river, popping out to the shops, or meeting friends at one of the local pubs or restaurants have all just become part of daily life."

This home has held a lot of happy memories for us, which makes it very hard to leave. But since welcoming our fourth child, we have realised we need a bit more space for our growing family."

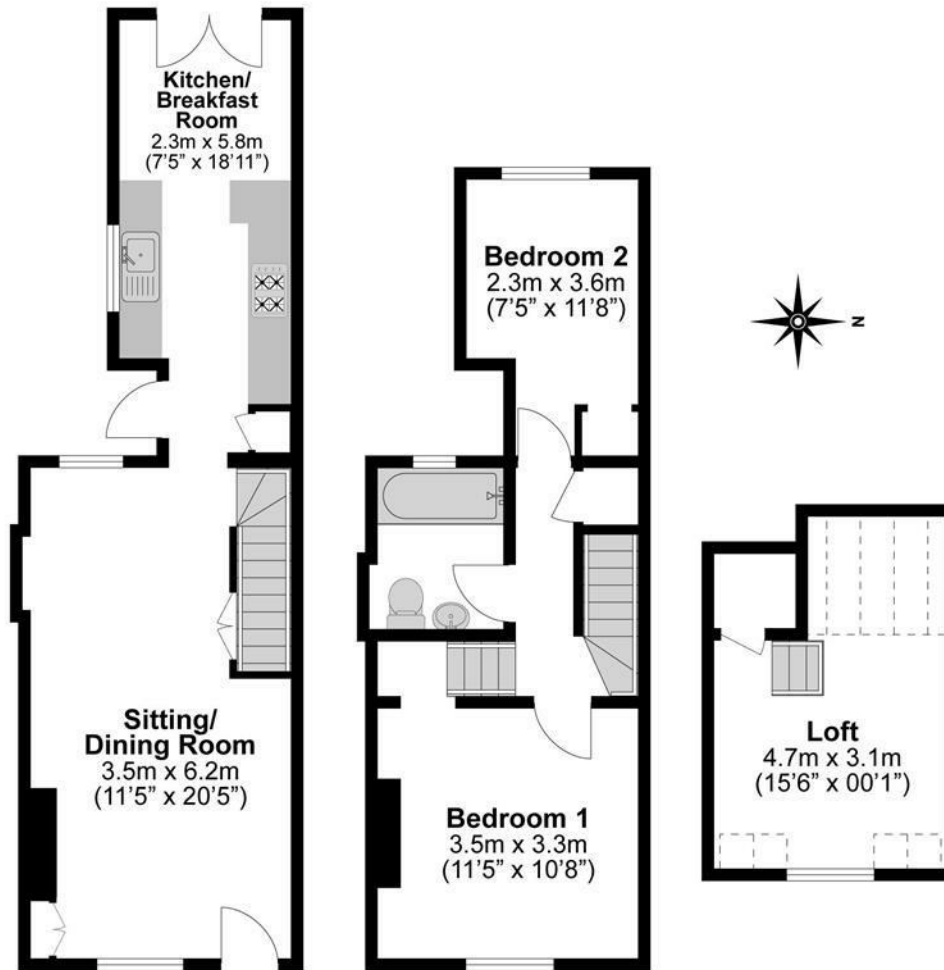




Total Approximate Floor Area

845 Square feet

79 Square metres



**Illustrations are for identification purposes only,
measurements are approximate, not to scale.**