



**3 Bed
House - Semi-
Detached
located in Morden**

£2,500 PCM

ORLANDO REID



ORLANDO REID
LONDON

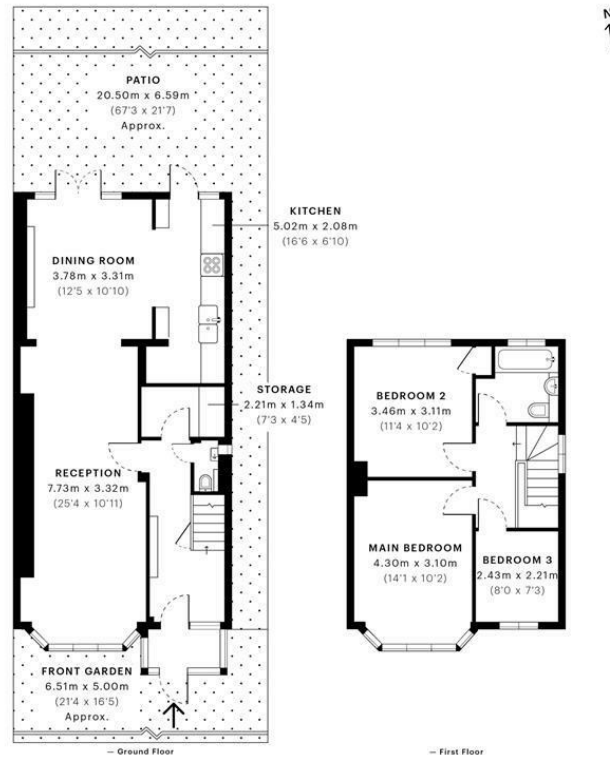


Victory Avenue, SM4

CAPTURE DATE: 08/11/2021 LASER SCAN POINTS: 7,675,089

GROSS INTERNAL AREA

104.08 sqm / 1120.31 sqft



DIRECTIONS

CONTACT

1-3 Old Town
Clapham
London
SW4 0JT

E: lettings@orlandoreid.co.uk
T: 020 7627 3197
www.orlandoreid.co.uk



Spec Verified floor plans are produced in accordance with Royal Institution of Chartered Surveyors' Property Measurement Standards. Plots and gardens are illustrative only and excluded from all area calculations. Due to rounding, numbers may not add up precisely. All measurements shown for the individual room lengths and widths are the maximum points of measurements captured in the scan.

IPW 3B RESIDENTIAL: 101.38 sqm / 1090.17 sqft
IPW 3C RESIDENTIAL: 95.86 sqm / 1031.83 sqft
SPEC ID: 618505492bd830dd78bbd71

