



## Cherry Orchard Road, KT8

£1,115,000

This detached house is a brilliant home that you can really put your own mark on. The plot itself is a developers' dream (all subject to planning permission), with a huge garden, multiple points of access and spread over two titles.

Cherry Orchard Road backs onto The Thames and Towpath at West Molesey. You will find excellent local schools nearby and you are a short stroll away from the shops and cafés on Walton Road in East Molesey.

### Features

- Four/Five Bedrooms
- Detached
- Flexible Layout
- Two Titles For Sale
- Close To The River
- Large Garden



## Cherry Orchard Road, KT8

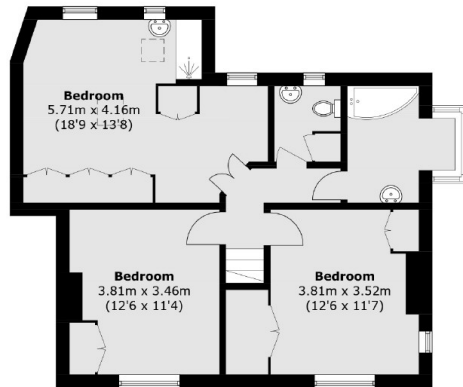
Currently set up as one house with two self contained annexes the upstairs and downstairs space can be completely tailored to how you want to use it.

As it stands the whole property has four/five bedrooms, three bathrooms, loads of reception rooms and the real show stopping element is the massive rear garden.

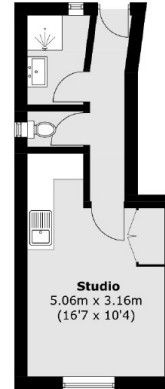
There is plenty of off street parking at the front and back where the house comes with a garage, previously the "boat house" and further parking.



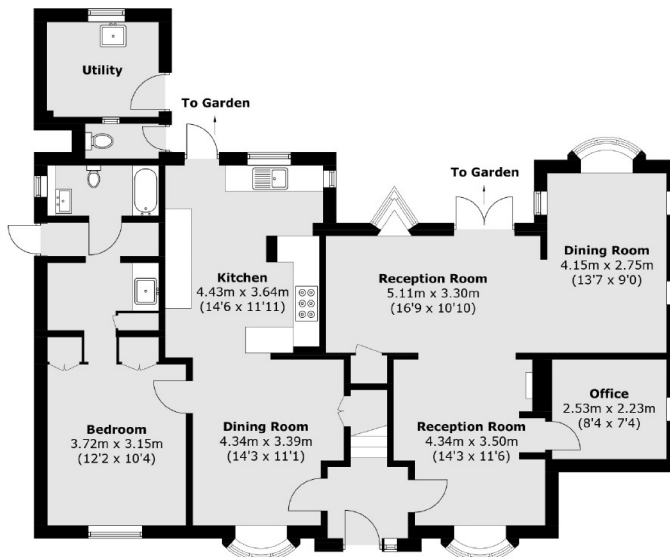
# Cherry Orchard Road, West Molesey, KT8



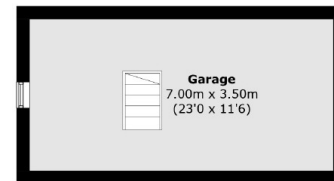
**First Floor**



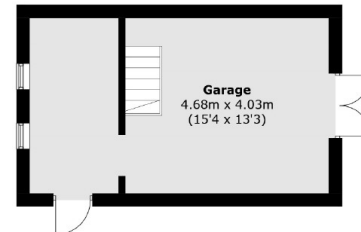
**Outbuilding  
Annex - First Floor**  
(Not Shown In Actual  
Location / Orientation)



**Ground Floor**



**Garage - First Floor**



**Outbuilding  
Garage - Ground Floor**  
(Not Shown In Actual  
Location / Orientation)

Approx Internal Area: 172.1 sq. m (1,852.5 sq. ft)  
Outbuildings : 82.5 sq. m (888.0 sq. ft)  
Total: 254.6 sq. m (2,740.5 sq. ft)  
(Including Garage)