
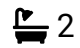



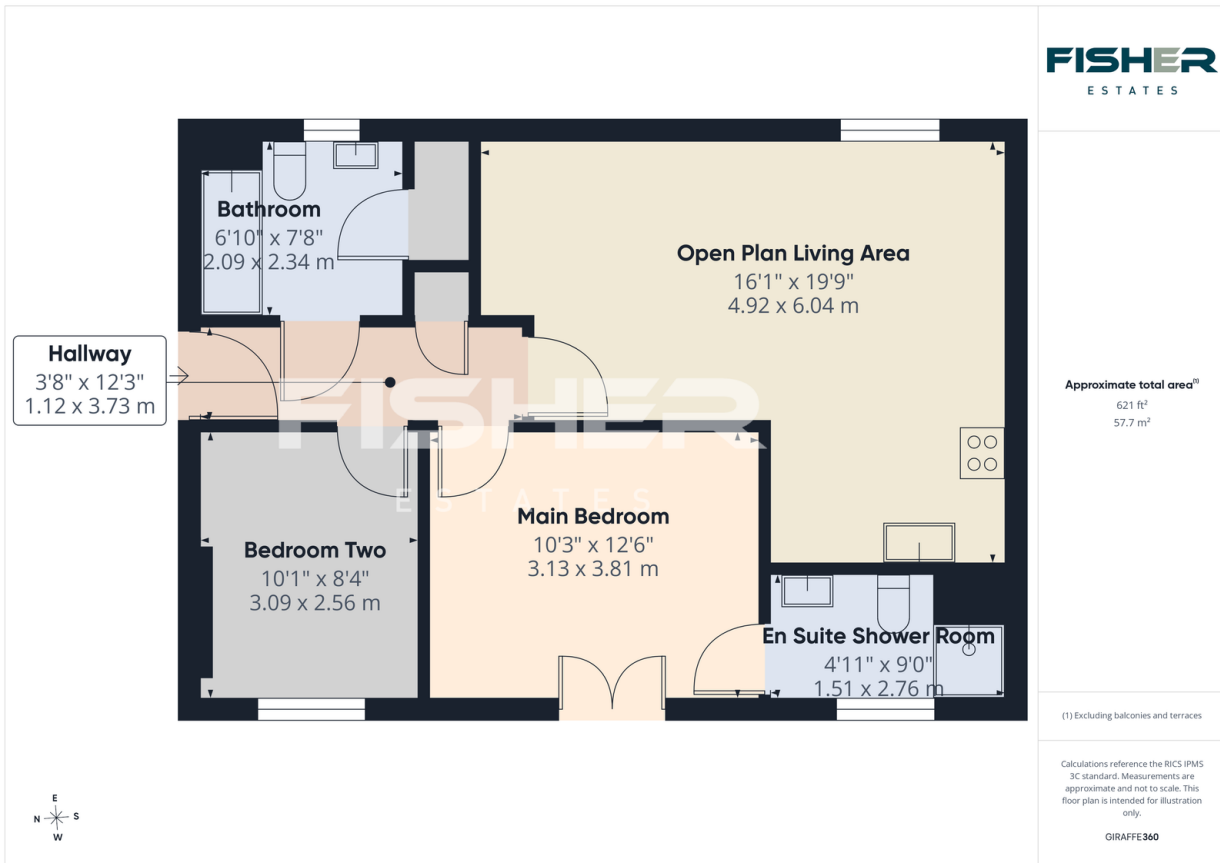
### 4 Axial Drive,

Offers In Region Of £180,000

 2  2  1



- Two Bedroom Apartment
- Master Bedroom Complete With En-Suite Shower Room
- Prime Location In North Colchester & Close To Mainline Station
- Separate Bathroom
- Ground Floor
- Added Luxury Of A Balcony
- Ideal For First Time Buyers & Working Professionals
- No Onward Chain



Fisher Estates are pleased to offer This spacious two-bedroom Ground floor apartment located in a prime position in North Colchester, just a short distance from Colchester North Station, offering direct train services to London Liverpool Street in under an hour. Perfect for commuters and working professionals, the property also benefits from being close to Turner Rise Retail Park, which offers a variety of supermarkets, restaurants, shops, and everyday amenities.