

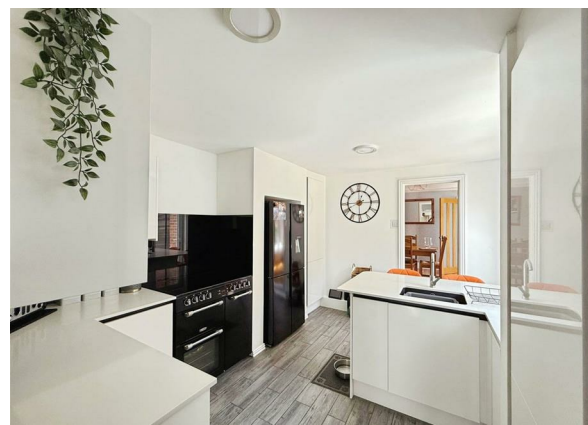
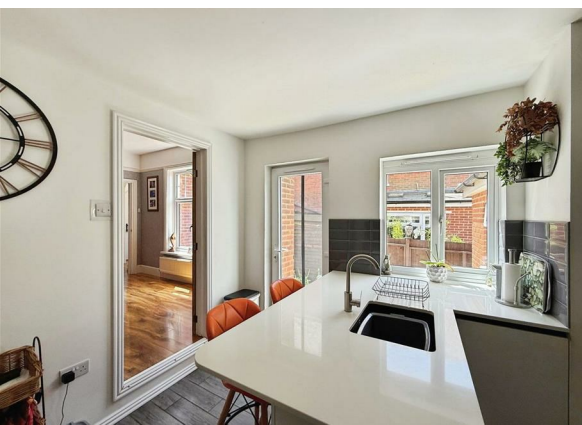
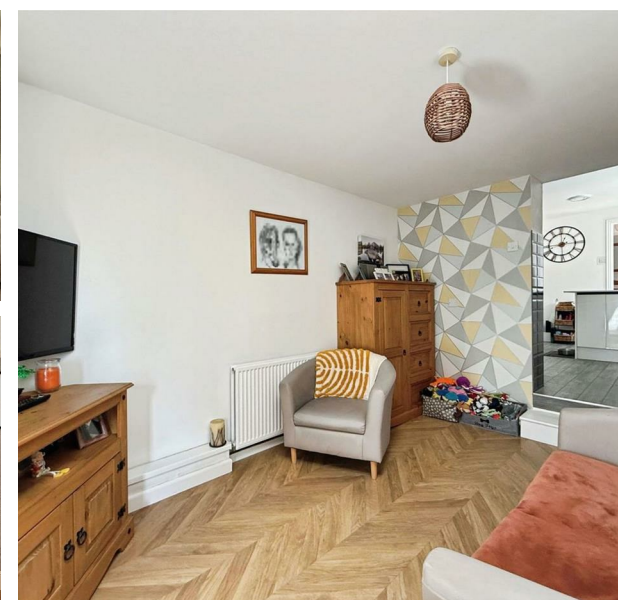
27 Grove Road, Sandown, PO36 9BG

Asking Price £395,000

EPC Rating: C Council Tax Band: D

ELLIOTT
LINCOLN
ESTATE AGENTS & ASSOCIATES

Reassuringly familiar, refreshingly new



Positioned on a popular residential street just moments from Sandown’s picturesque coastline, this spacious and exceptionally well-maintained five-bedroom, three-bathroom semi-detached home offers a rare opportunity for those seeking versatile living arrangements.

Office 4, Baring Chambers Denmark Road
Cowes
Isle of Wight
PO31 7SY
01983 642622
office@elliottlincoln.co.uk
www.elliottlincoln.co.uk



Total floor area: 130.1 sq.m. (1,401 sq.ft.)

This floor plan is for illustrative purposes only. It is not drawn to scale. Any measurements, floor areas (including any total floor area), openings and orientations are approximate. No details are guaranteed, they cannot be relied upon for any purpose and do not form any part of any agreement. No liability is taken for any error, omission or misstatement. A party must rely upon its own inspection(s). Powered by www.Propertybox.io

Energy Efficiency Rating		
	Current	Potential
Very energy efficient - lower running costs		
(92 plus) A		
(81-91) B		
(69-80) C		
(55-68) D		
(39-54) E		
(21-38) F		
(1-20) G		
Not energy efficient - higher running costs		
England & Wales		
EU Directive 2002/91/EC		