



# Queens Cottage

£930,000

Ewhurst, GU6 7PG



3 Bedrooms



1 Receptions



2 Bathrooms



Link Detached



EPC:

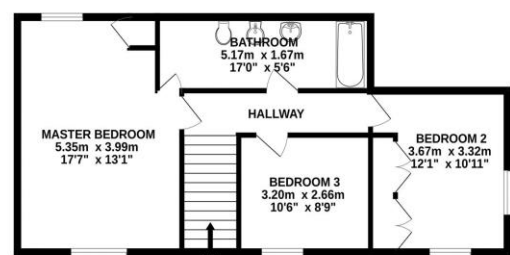
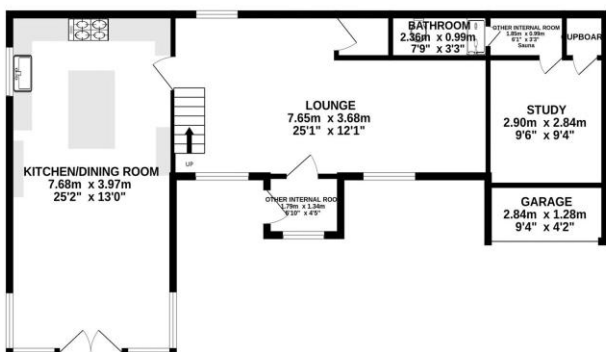
Situated in the very heart of the sought-after Surrey village of Ewhurst, directly opposite the village pub and surrounded by the beautiful Surrey Hills countryside, Queen's Cottage is a charming and deceptively spacious period home offering over 1,400 sq ft of beautifully presented accommodation. Hidden behind attractive brick walls and approached via a character timber gate, the property enjoys a wonderful sense of privacy and seclusion despite its central village position. The accommodation blends period charm with modern family living. The impressive 25ft kitchen/dining room forms the heart of the home, featuring a range of shaker-style units, granite work surfaces and ample space for both dining and day-to-day family life. Large glazed doors and a garden room extension flood the space with natural light and provide an attractive connection to the gardens beyond. The generous sitting room offers a wealth of character with exposed brickwork, timber beams and a feature wood-burning stove, creating a warm and welcoming living environment. A separate study provides an ideal home office or occasional guest accommodation, complemented by a ground floor shower room. On the first floor are three well-proportioned double bedrooms, including an impressive principal bedroom, all served by a spacious family bathroom. Outside, the attractive walled gardens have been thoughtfully designed to provide colour, privacy and year-round interest. Stone terraces offer excellent areas for outdoor dining whilst the mature planting creates a quintessential cottage garden atmosphere rarely found in such a convenient village location. Queen's Cottage represents a rare opportunity to acquire a substantial character home in one of Surrey's most desirable villages, combining period features, generous living space and delightful gardens within easy reach of local amenities and miles of surrounding countryside. Ewhurst is one of Surrey's most sought-after villages, lying on the edge of the Surrey Hills Area of Outstanding Natural Beauty. The village offers a popular public house, village store, church and highly regarded primary school.



GROUND FLOOR  
75.7 sq.m. (815 sq.ft.) approx.



1ST FLOOR  
58.1 sq.m. (625 sq.ft.) approx.



TOTAL FLOOR AREA : 133.7 sq.m. (1440 sq.ft.) approx.

Whilst every attempt has been made to ensure the accuracy of the floorplan contained here, measurements of doors, windows, rooms and any other items are approximate and no responsibility is taken for any error, omission or mis-statement. This plan is for illustrative purposes only and should be used as such by any prospective purchaser. The services, systems and appliances shown have not been tested and no guarantee as to their operability or efficiency can be given.  
Made with Metropix ©2026