




- 3D Virtual Tour
- 1985 Omar Park Home
- Deanland Wood Park
- Garage & Off Road Parking
- Two Bedrooms
- L Shape Lounge/Dining Room
- Kitchen & Utility Room
- Well Kept Gardens
- Viewing Highly Advised



Freehold  
**£200,000**

 2 BEDROOM

 1 RECEPTION

 2 BATHROOM

 1 GARAGE

Fox Hollow, Deanland Wood Park, Hailsham

# Fox Hollow, Deanland Wood Park, Hailsham

## DESCRIPTION

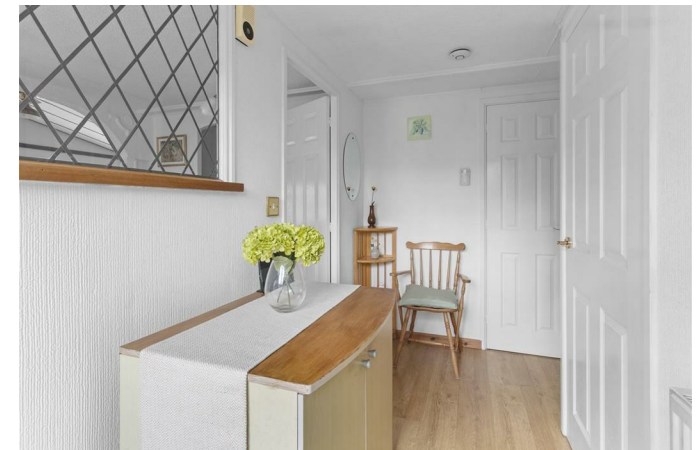
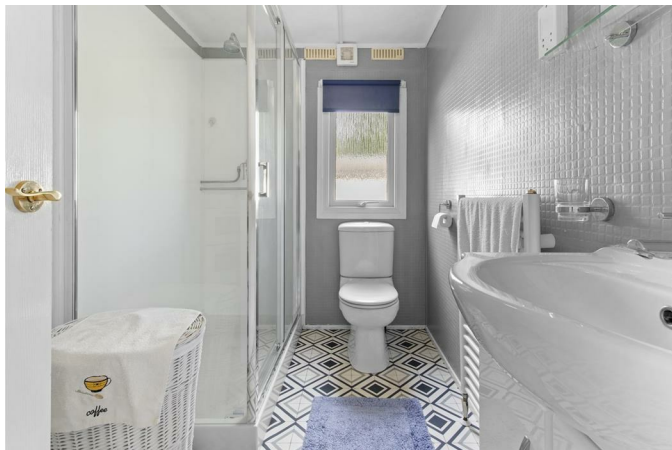
3D Virtual Tour | Park Home | Deanland Wood Park | Garage | Off Road Parking | Two Bedrooms | L shape Lounge/Dining Room | Kitchen | Utility Room | Two Bathrooms | Viewing Advised |

Nestled in the serene surroundings of Fox Hollow, within the esteemed Deanland Wood Park, this charming park home offers a delightful retreat for those seeking a peaceful lifestyle. The property features two well-proportioned bedrooms with the primary bedroom offering an ensuite bathroom/WC. The spacious L-shaped lounge and dining area provide a welcoming space for relaxation and entertaining, while the kitchen and utility area ensure practicality for everyday living.

With two bathrooms, including an ensuite, convenience is at the forefront of this home. The ample outside space allows for outdoor enjoyment, whether it be gardening or simply soaking up the sun. Off-road parking and a garage add to the practicality of this property, making it easy to come and go as you please.

Situated on a popular, award-winning residential site that is open all year round, residents can take advantage of the on-site facilities and the bus services to Hailsham and surrounding towns, ensuring easy access to local amenities. Viewing is highly advised to fully appreciate the charm and comfort this park home has to offer. Embrace a tranquil lifestyle in this delightful setting, where community and nature harmoniously blend.

Monthly Pitch Fee - £204.91 Plus Water £15.54  
1985 Omar Sherringham 42Ft x 20Ft





## Fox Hollow, Deanland Wood Park, Hailsham

---

Entrance Hall 4.88m x 3.63m (16'0 x 11'11)

Lounge 3.84m x 5.89m (12'7 x 19'4)

Dining Room 3.10m x 2.29m (10'2 x 7'6)

Kitchen 3.23m x 2.95m (10'7 x 9'8)

Utility Room 1.80m x 1.27m (5'11 x 4'2)

Bedroom One 3.61m x 2.90m (11'10 x 9'6)

Ensuite/WC 2.36m x 1.65m (7'9 x 5'5)

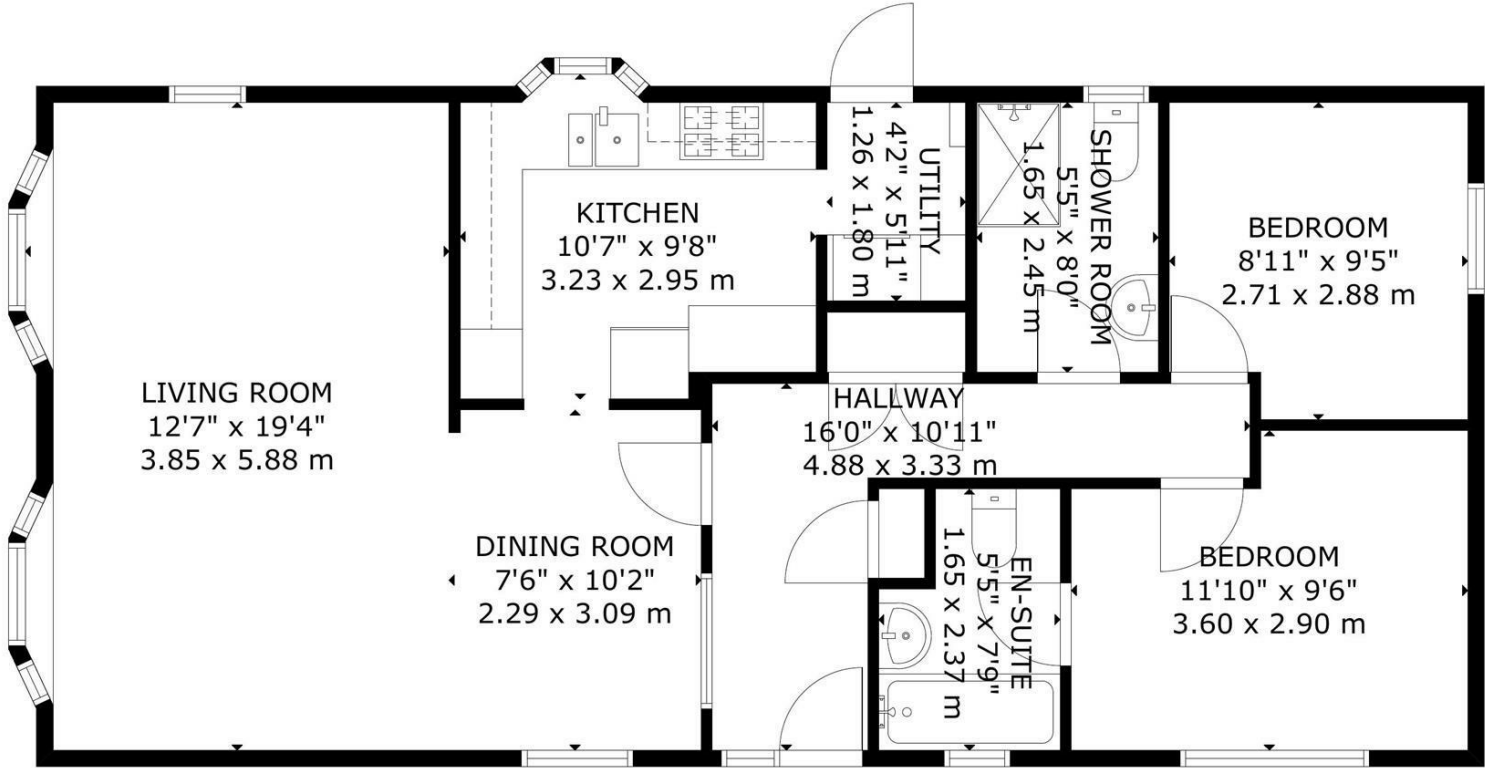
Bedroom Two 2.87m x 2.72m (9'5 x 8'11)

Shower Room/WC 2.44m x 1.65m (8'0 x 5'5 )

Garage & Off Road Parking



# Fox Hollow, Deanland Wood Park, Hailsham



Energy Efficiency Rating		Current	Potential
Very energy efficient - lower running costs			
(92 plus) <b>A</b>			
(81-91) <b>B</b>			
(69-80) <b>C</b>			
(55-68) <b>D</b>			
(39-54) <b>E</b>			
(21-38) <b>F</b>			
(1-20) <b>G</b>			
Not energy efficient - higher running costs			
<b>England &amp; Wales</b>		EU Directive 2002/91/EC	

GROSS INTERNAL AREA  
TOTAL: 76 m<sup>2</sup>/823 sq.ft  
FLOOR 1: 76 m<sup>2</sup>/823 sq.ft  
SIZE AND DIMENSIONS ARE APPROXIMATE, ACTUAL MAY VARY

FLOOR 1



You may download, store and use the material for your own personal use and research. You may not republish, retransmit, redistribute or otherwise make the material available to any party or make the same available on any website, online service or bulletin board of your own or of any other party or make the same available in hard copy or in any other media without the website owner's express prior written consent. The website owner's copyright must remain on all reproductions of material taken from this website.

47 High Street | Hailsham | East Sussex | BN27 1AN

Tel: 01323 840444  
www.stevensandcarter.co.uk

