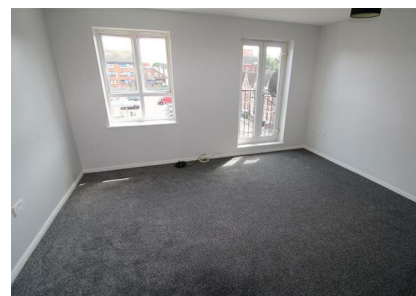


Flat 38 Marlborough Court Grove Road, Luton, Bedfordshire,
LU1 1RW
£925 PCM

ROBINSONS



AVAILABLE END OF JUNE A SECOND FLOOR ONE BEDROOM FLAT IN TOWN CENTRE LOCATION WITH GATED UNDERGROUND PARKING.

Available June a second floor one bedroom flat in Luton Town Centre a short walk from the Station. ACCOMODATION COMPROMISES: Entrance hall, living room open plan with kitchen, bathroom with bath and shower, large bedroom with wardrobes.



20 West Street
Dunstable
Bedfordshire
LU6 1SX
01582 661112
sales@robinsons-estates.co.uk
<https://www.robinsons-estates.co.uk>



Energy Efficiency Rating		Current	Potential
<i>Very energy efficient - lower running costs</i>			
(92 plus) A			
(81-91) B			
(69-80) C			
(55-68) D			
(39-54) E			
(21-38) F			
(1-20) G			
<i>Not energy efficient - higher running costs</i>			
England & Wales		EU Directive 2002/91/EC	