



HAREWOOD AVENUE

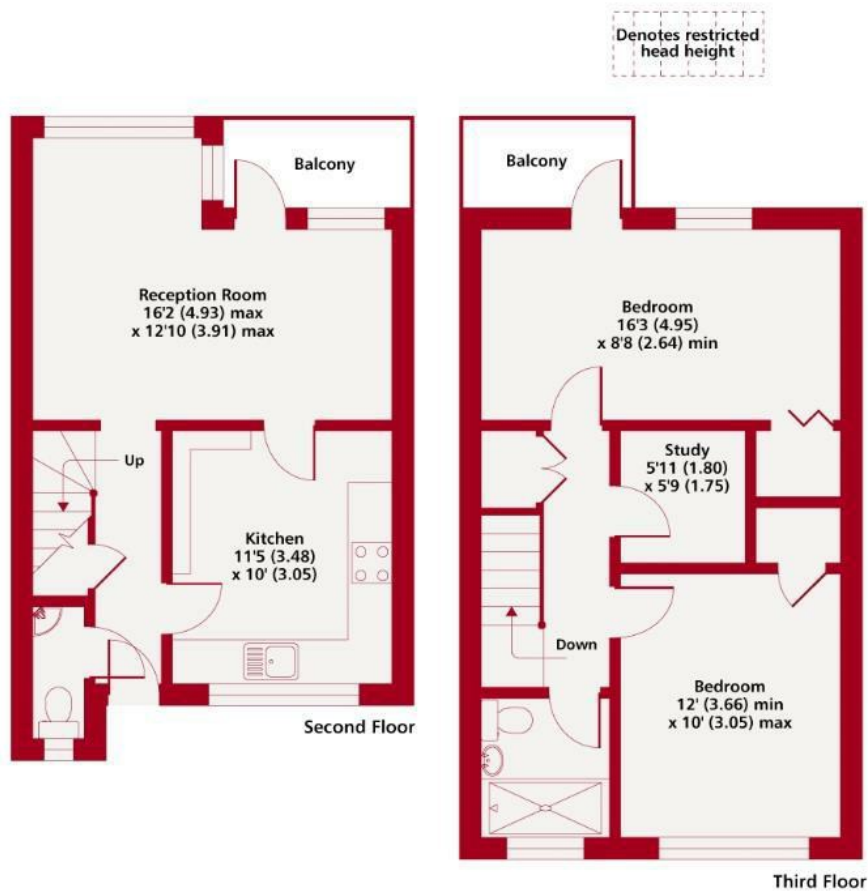
LONDON, NW1

£3,000 PER MONTH

Superb 2 bedroom floor apartment situated moments from Marylebone Overground (National Railway and Bakerloo Line), along with a large selection of restaurants, shops, bars and cafés.

The apartment comprises two double bedroom, kitchen, spacious reception room, and a balcony. Offered in fantastic condition with neutral decor throughout.

PMP | INTERNATIONAL



Energy Efficiency Rating		
	Current	Potential
Very energy efficient - lower running costs		
(92 plus) A		
(81-91) B		
(69-80) C		
(55-68) D		
(39-54) E	54	
(21-38) F		
(1-20) G		
Not energy efficient - higher running costs		
England & Wales	EU Directive 2002/91/EC	

Agents Note: Whilst every care has been taken to prepare these particulars, they are for guidance purposes only. All measurements are approximate and are for general guidance purposes only and whilst every care has been taken to ensure their accuracy, they should not be relied upon and potential buyers/tenants are advised to recheck the measurements

London
PMP International
94 Belsize Lane
Belsize Park
London
NW3 5BE

020 7701 2878
info@pmpi.co.uk
www.pmpi.co.uk

PMP | INTERNATIONAL