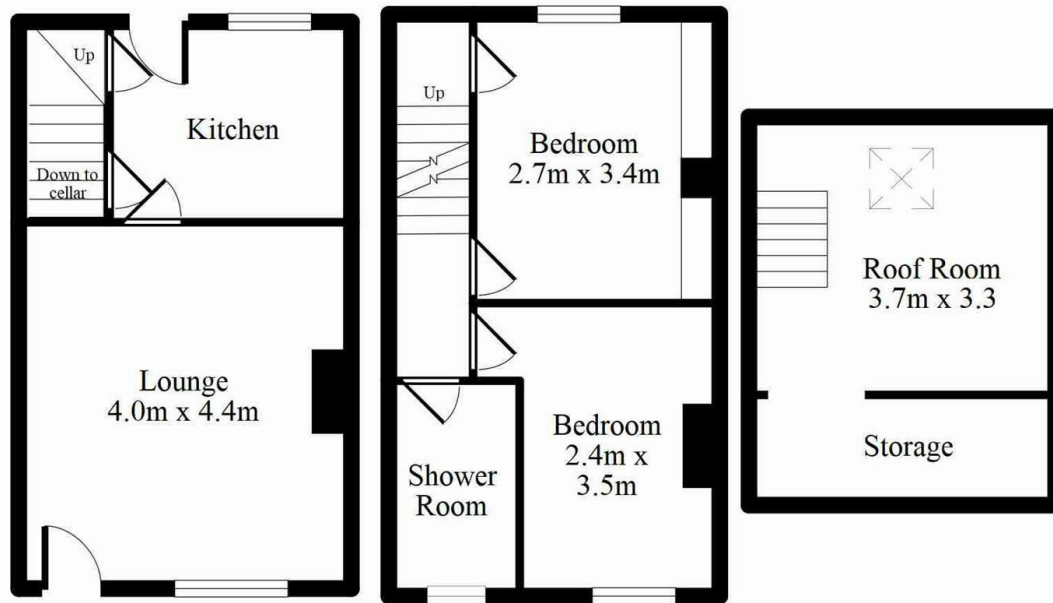




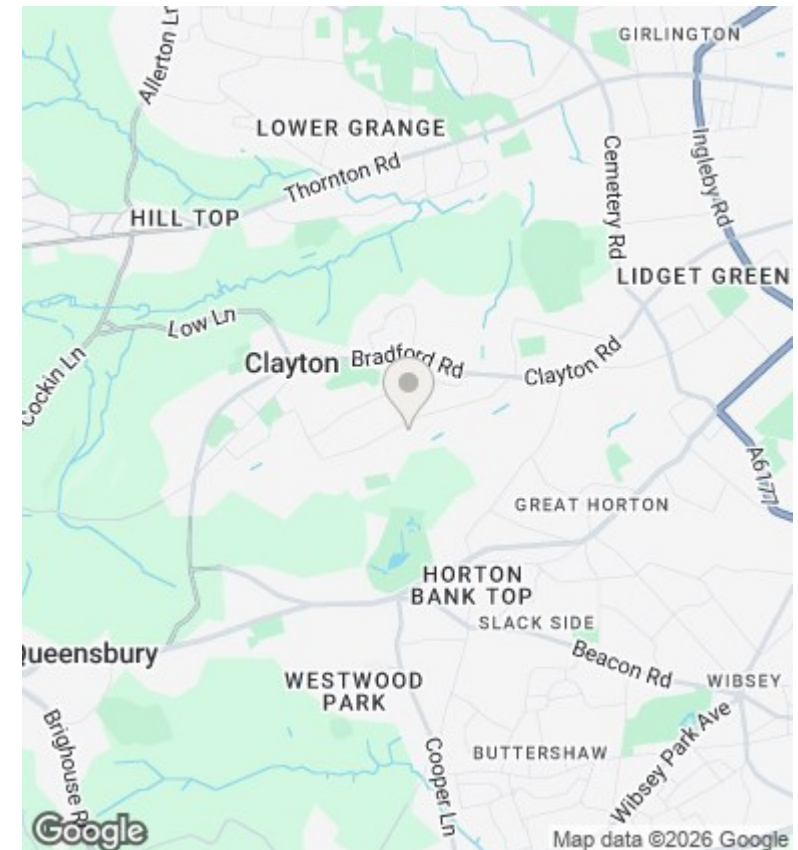
## 15 Aberdeen Terrace, Clayton, Bradford, BD14 6LS

£150,000

- STONE BUILT MID THROUGH TERRACE
- UPVC DOUBLE GLAZING
- LARGE CELLAR OFFERING POTENTIAL
- EARLY VIEWING ADVISED
- TWO DOUBLE BEDROOMS + ATTIC ROOM
- OFF-ROAD PARKING SPACE TO REAR
- OCCASIONAL ATTIC BEDROOM
- GAS CENTRAL HEATING
- WELL MAINTAINED & PRESENTED
- POPULAR LOCATION



Every attempt has been made to ensure this floor plan is accurate, however their accuracy is not guaranteed. The floorplan is for illustrative purposes and should be used in that context. GFPMs2026



## Directions

## Viewings

Viewings by arrangement only.  
Call 01274884040 to make an appointment.

## Council Tax Band

B

## EPC Rating:

D

Energy Efficiency Rating		Current	Potential
Very energy efficient - lower running costs			
(92 plus) <b>A</b>			
(81-91) <b>B</b>			<b>83</b>
(69-80) <b>C</b>			
(55-68) <b>D</b>		<b>61</b>	
(39-54) <b>E</b>			
(21-38) <b>F</b>			
(1-20) <b>G</b>			
Not energy efficient - higher running costs			
<b>England &amp; Wales</b>		EU Directive 2002/91/EC	