



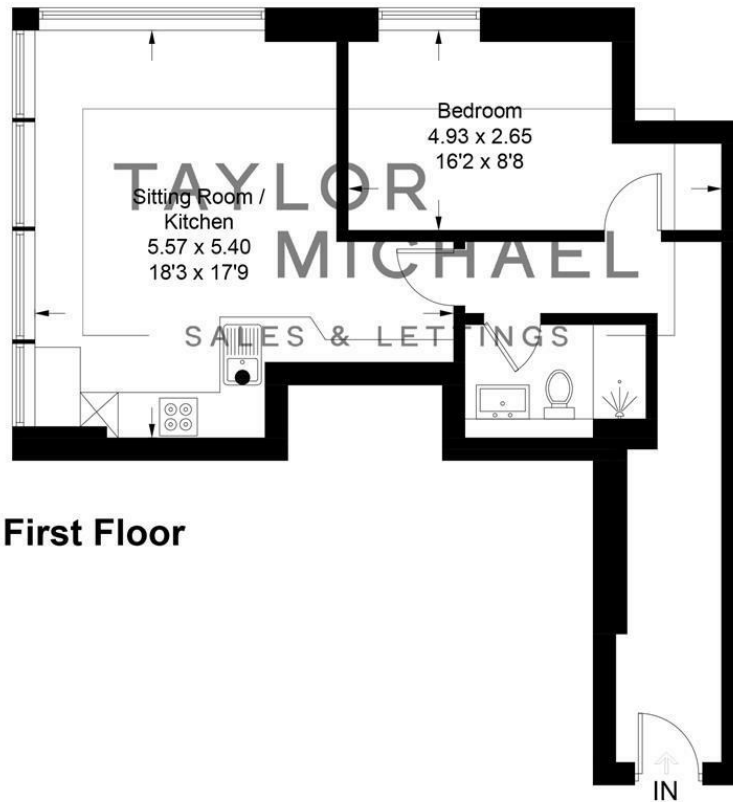
1 Bed
Flat
located in

£1,200 Per month



Premium House The Esplanade, Worthing BN11 2BJ

Approximate Gross Internal Area = 50.2 sq m / 540 sq ft



First Floor

Illustration for identification purposes only, measurements are approximate, not to scale.
Imageplansurveys @ 2025

DIRECTIONS

CONTACT

62 Church Road
Hove
East Sussex
BN3 2FP

E: lettings@taylormichael.agency
T: 01273 600100
<https://taylormichael.agency/>

Energy Efficiency Rating		Current	Potential
Very energy efficient - lower running costs			
(92 plus) A			
(81-91) B			
(69-80) C		78	78
(55-68) D			
(39-54) E			
(21-38) F			
(1-20) G			
Not energy efficient - higher running costs			
England & Wales		EU Directive 2002/91/EC	

**TAYLOR
MICHAEL**