



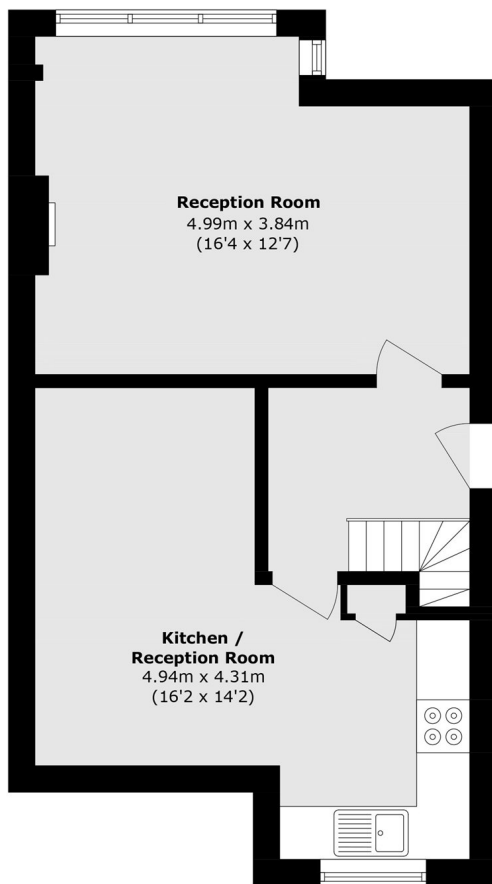
Beresford Avenue, W7

£675,000

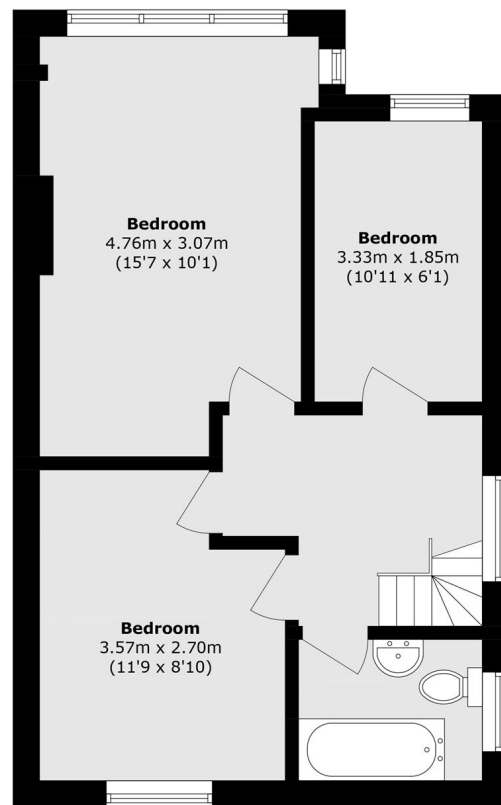
This three bedroom family home located on a quiet residential road has been fully refurbished throughout. The property benefits from a south facing garden and is offered to the market with no onward chain.

Conveniently located near local amenities, bus routes to Ealing and Greenford, under a mile from Hanwell (Elizabeth line) station and within catchment for Brentside High and Mayfield Primary schools.

- Three Bedroom • Chain Free • Semi-Detached •
- Newly Refurbished • Freehold • South Facing Garden •



Ground Floor



First Floor

Total area (approx.): 81.7 sq. m (879.4 sq. ft)

Robertson Smith & Kempson Hanwell Sales
69 Greenford Avenue,
London, W7 1LL
020 8566 2339
hanwellsales@robertsonsmithandkempson.co.uk

Energy Rating: D. We aim to make our particulars both accurate and reliable. However they are not guaranteed; nor do they form part of an offer or contract. If you require clarification on any points then please contact us, especially if you're traveling some distance to view. Please note that appliances and heating systems have not been tested and therefore no warranties can be given as to their good working order.