



, Hereford, HR4 9EP

£825,000

Imperial Chambers, 24 Widemarsh Street, , HR4 9EP

£825,000 Freehold

Description

MIXED USE INVESTMENT PROPERTY FOR SALE IMPERIAL CHAMBERS 24 WIDEMARSH STREET HEREFORD HR4 9EP
GUIDE PRICE £825,000 SITUATION Imperial Chambers is situated on the east side of Widemarsh Street close to Maylord Street which leads to Maylord Orchards shopping centre redeveloped in the 1980's along the original street pattern of the City. Widemarsh Street is the main shopping street in Hereford due to the large amount of footfall passing between High Town and the Old Market built by British Land. A mixed use redevelopment scheme of over 300,000 sq.ft of food & leisure & retail outlets, Waitrose Supermarket, car-parking, offices of M&M Direct, Matalan & the home of The Beefy Boys, En Steak, En BBQ, and Miller & Carter to name of few restaurants that accompany the ODEON cinema. The Hereford BID figures will show the pedestrian flow is significant at all times of the year. DESCRIPTION Imperial Chambers

Hereford Office

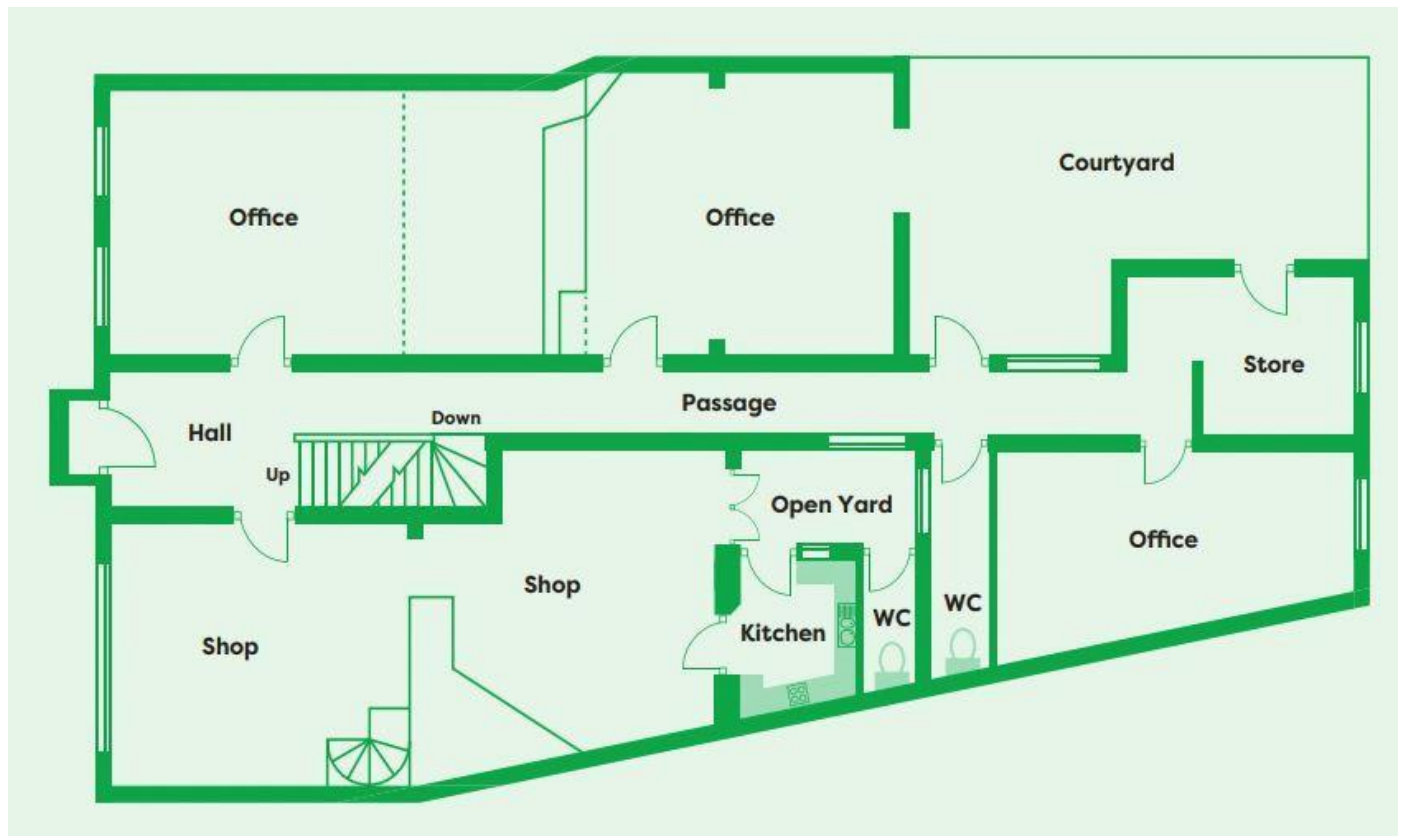
Free Sales Valuations
Free Mortgage Advice
100% Sales

01432 277734

W: williamsestateagents.co.uk
21 West Street, Hereford, HR4 0BX



Imperial Chambers, 24 Widemarsh Street, , HR4 9EP



**Made
Herefordshire**

