



Bosorne Road, St Just TR19

£175,000

🛏 2 🚿 1 🚗 1



Packed with charm, and endearing features, this end of terrace cottage has reclaimed doors, bespoke units in the kitchen and a very charming, dual aspect living room - there is an area of garden at the back to which this property has rights to exclusive use.



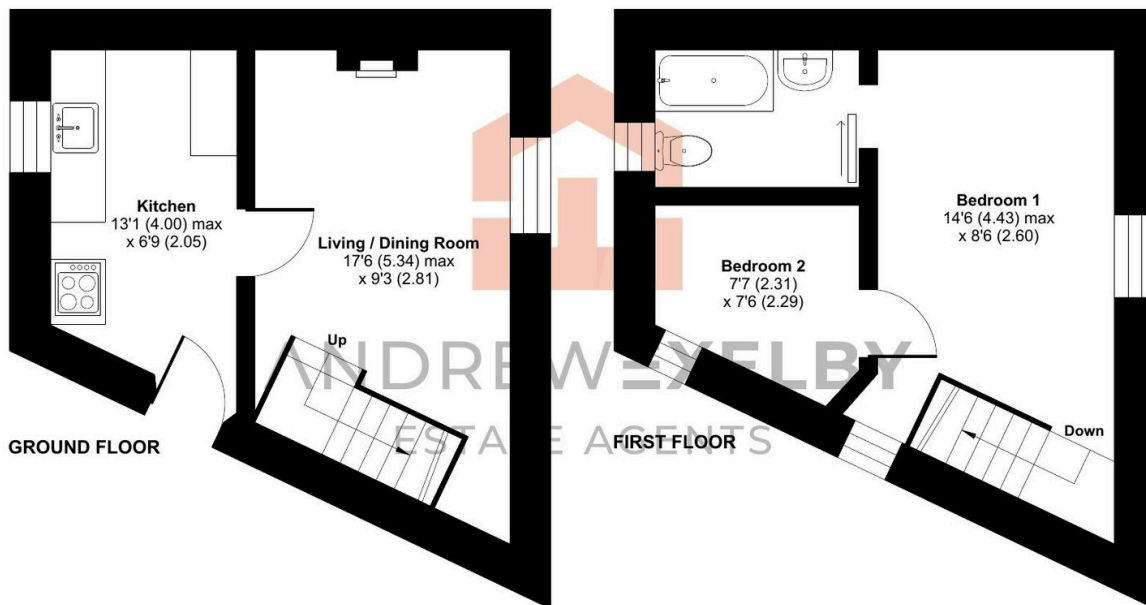
Key Features


- TWO BEDROOM END OF TERRACE COTTAGE
- RECLAIMED DOORS THROUGHOUT
- INGLENOOK FIREPLACE WITH MULTIFUEL STOVE
- EPC - E
- NO ONWARD CHAIN / CHAIN FREE
- FULLY REFURBISHED IN 2019 / 2020
- DOUBLE GLAZED THROUGHOUT
- CLOSE TO ST JUST TOWN CENTRE
- COUNCIL TAX BAND - A



Bosorne Road, St. Just, Penzance, TR19

Approximate Area = 462 sq ft / 42.9 sq m
For identification only - Not to scale



 Floor plan produced in accordance with RICS Property Measurement 2nd Edition, Incorporating International Property Measurement Standards (IPMS2 Residential). © nchecom 2025. Produced for Andrew Exelby Estate Agents. REF: 1312958