

**Head Office:**  
Dixon Kelley Estate Agents  
1 Penn Court  
Station Road, West Moors  
Dorset. BH22 0JJ

**Telephone: 01202 877511**

# DORSET PARK HOMES

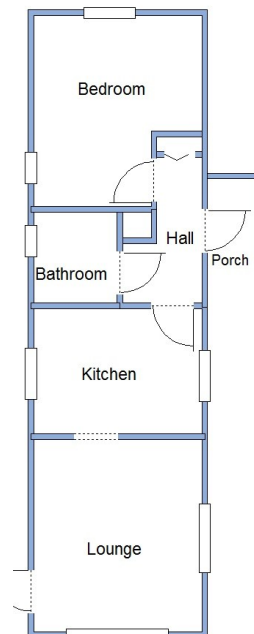
**DRAFT**

[www.dorsetparkhomes.com](http://www.dorsetparkhomes.com)

**81 The Copse, Oaktree Park, Ringwood Road, St Leonards, Ringwood. BH24 2RH**



**Delightful Position on Edge of Park**



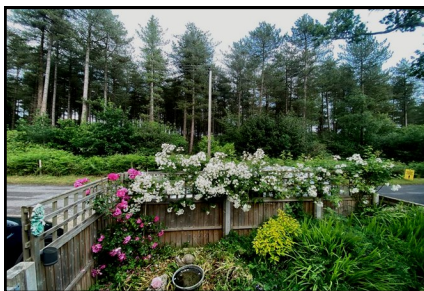
This drawing has been prepared for diagrammatic purpose only. Not to scale.

## 1-Bedroom Park Home - approx 36' x 10'

**Accommodation & approximate room dimensions:**

- **Entrance Porch**
- **Hall:** Cloak cupboard.
- **Kitchen:** approx 9'7" x 7'4". Newly installed with range of high gloss floor & wall cupboards. Built-in oven, hob. Integrated washing machine. Worcester gas combination boiler (untested). Breakfast table.
- **Lounge:** approx 11'3" x 9'7". Bay window with Forest View. Door to garden.
- **Double Bedroom:** approx 11'2" x 9'7" max. Fitted wardrobe.
- **Shower Room:** Modern Corner shower with thermo-static shower. Vanity wash basin & WC.
- **Gas Central Heating** (system untested)
- **PVCu Double-Glazing**
- **Delightful Garden** with 3 Metal Sheds
- **Parking On Plot**
- **Age Restriction 50+ Pets Considered**
- **Residents Members club on park**
- **Well maintained Residential Park** between Ringwood & Ferndown.

## Park Home with Forest View



**Pitch Fee: approx £197 per month**  
**Subject to Annual Review**  
**Council Tax Band: 'A'**

**Tenure: 1983 Mobile Homes Act Agreement**

**Price: £95,000**

**VIEWING STRICTLY BY APPOINTMENT WITH THE VENDOR'S AGENT Dorset Park Homes 01202 877511**

**IMPORTANT NOTE:** These particulars are believed to be correct but their accuracy is not guaranteed. They do not form part of any contract. Nothing in these particulars shall be deemed to be a statement that the property is in good structural condition or otherwise, nor that any of the services, appliances, equipment or facilities are in good working order or have been tested. Purchasers should satisfy themselves on such matters prior to purchase Ref.W05059

*The recommended specialist in Park Home sales*  
Partner: Simon Dixon

