



Culford Gardens, SW3

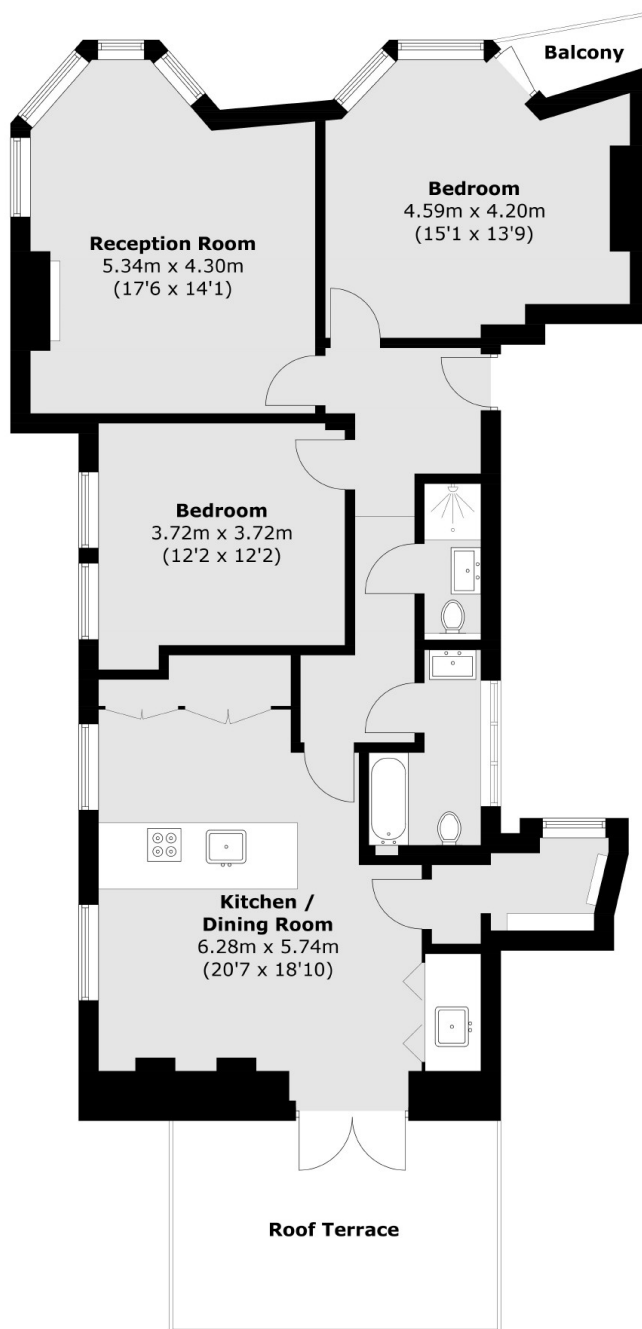
£1,615 Per calendar month

This two bedroom, two bathroom apartment to rent is in the heart of Sloane Square. The property is finished to a high standard making this the perfect property for a professional family or couple.

Culford Gardens is a very close walk from Sloane Square with easy access to all amenities and shops, bars and restaurants of Kings Road and the Duke of York Square.

Features

Culford Gardens, London, SW3



Total area (approx.): 101.1 sq. m (1088.2 sq. ft)
Balcony area (approx.): 1.7 sq. m (18.3 sq. ft)
Roof Terrace area (approx.): 15.4 sq. m (165.7 sq. ft)