



MAGGS
& ALLEN

Hall Floor Flat, 4 Gordon Road,
Clifton, BS8 1AP
£1,550 PCM

*** LARGE APARTMENT IN CLIFTON WITH COMMUNAL GARDEN IDEAL FOR PROFESSIONALS ***

Maggs and Allen are pleased to welcome this apartment nestled in the desirable area of Clifton, this charming one-bedroom apartment on Gordon Road offers a perfect blend of comfort and convenience.

The flat comprises a well-appointed double bedroom with built in storage and two large windows allowing natural light throughout the day.

There is also a large living space with a fireplace and separate kitchen and bathroom.

Residents can also enjoy access to a communal garden area, perfect for unwinding outdoors.

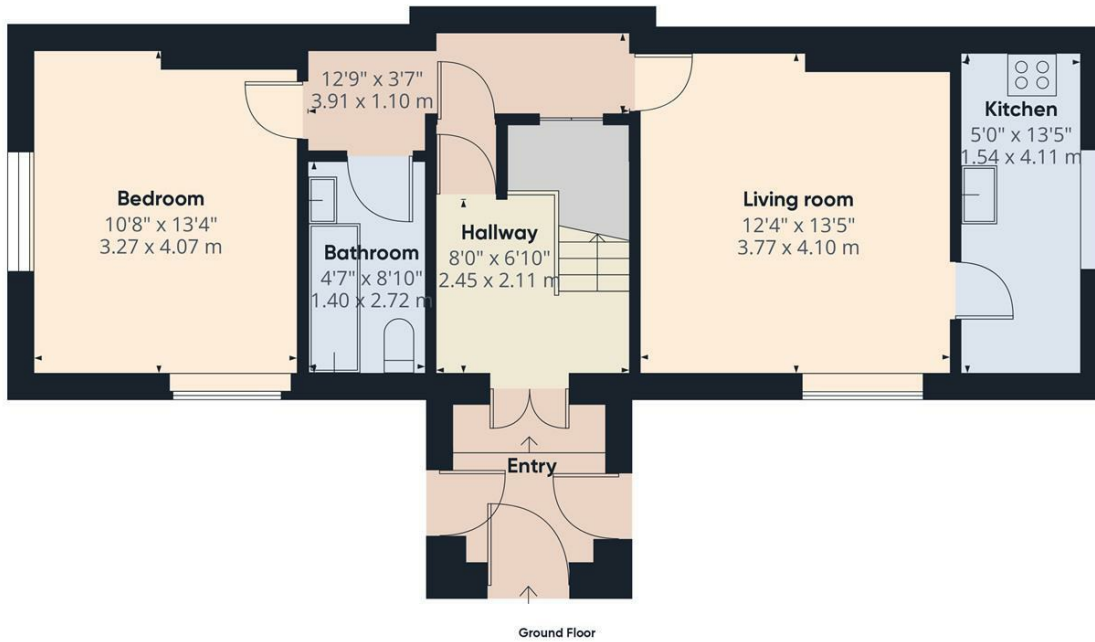
Perhaps Bristol's best-known area, Clifton exudes a timeless charm with its historic architecture - predominantly Georgian and Victorian buildings - creating a picturesque and inviting setting. The area is renowned for its green spaces, including the scenic Clifton Downs and the iconic Clifton Suspension Bridge.

Clifton has the rare benefit of being central, with easy access to the centre, but due to its location banking the River Avon, also offering a quick route out of the city towards North Somerset.

Whiteladies Road is host to number of well-regarded furniture shops, cafes, restaurants, pubs and bars and this is likewise the case with the Triangle and Park Street – featuring gorgeous Georgian architecture. A stroll through the Clifton Village is a unique and vibrant shopping experience, characterised by a range of independent shops, boutiques, and cafes that showcase the local businesses.

Available from August 2026.





Approximate total area⁽¹⁾
592.97 ft²
55.09 m²

(1) Excluding balconies and terraces

While every attempt has been made to ensure accuracy, all measurements are approximate, not to scale. This floor plan is for illustrative purposes only.

Calculations are based on RICS IPMS 3C standard.

GIRAFFE360

- SPACIOUS APARTMENT
- CLOSE TO TRANSPORT LINKS
- SEPERATE KITCHEN
- LARGE LOUNGE
- COMMUNAL GARDEN
- CLOSE TO LOCAL AMENITIES
- IDEAL FOR PROFESSIONALS
- HIGH CEILINGS AND LARGE WINDOWS
- DESIRABLE CLIFTON LOCATION
- AVAILABLE AUGUST 2026

Price Per Month: £1,550 PCM

Council Tax Band: B

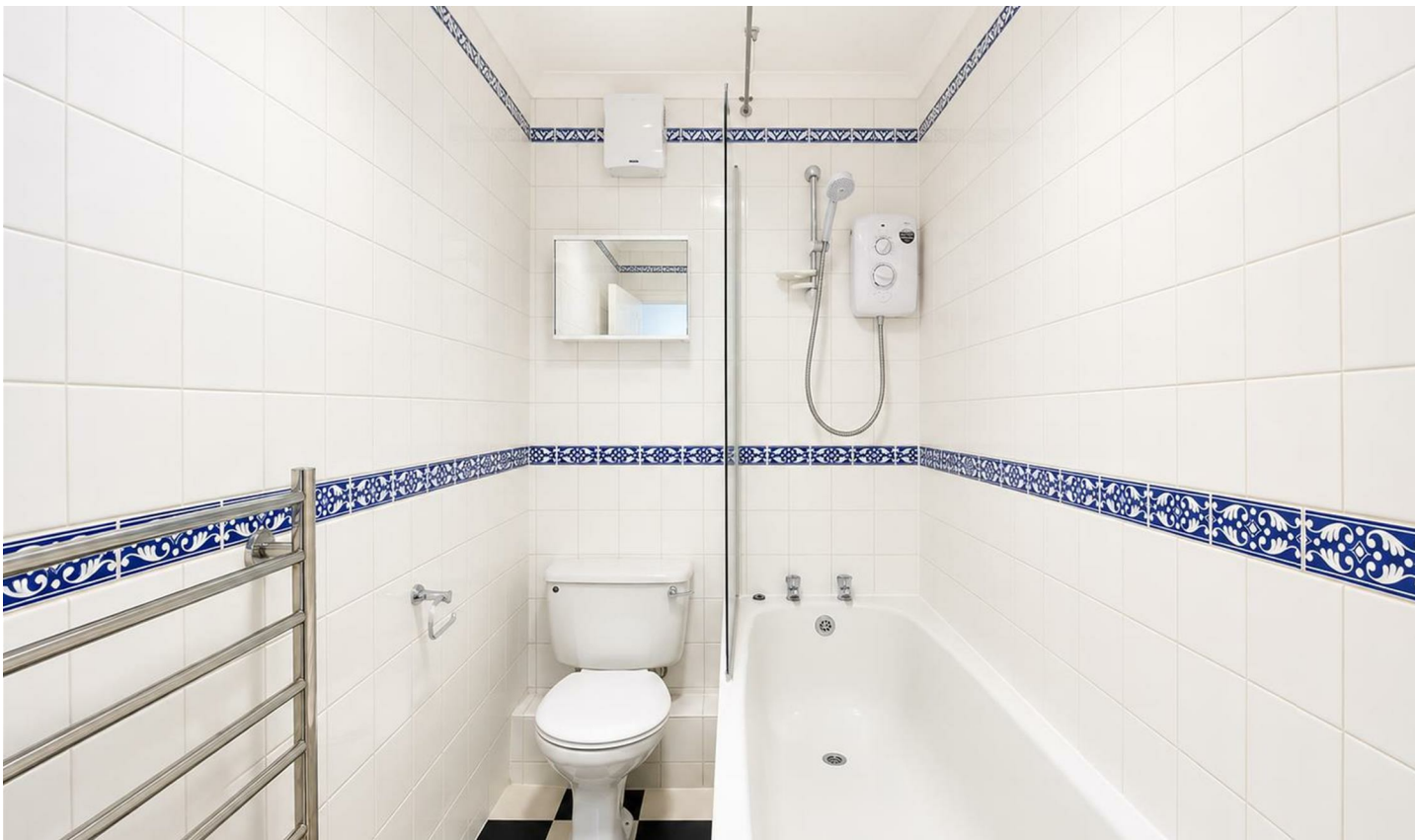
Local Authority: Bristol City Council

Viewing: By appointment only.

Contact Us: 0117 949 9000

Important Notice: This information was provided at the time of instruction and may be incorrect or liable to change. Please contact the office to confirm any details.





60 Northumbria Drive, Henleaze, Bristol, BS9 4HW
0117 949 9000
www.maggsandallen.co.uk | lettings@maggsandallen.co.uk



Maggs & Allen use all reasonable endeavours to supply accurate property information in line with the Consumer Protection from Unfair Trading Regulations 2008. These property details do not constitute any part of the offer or contract and all measurements are approximate. It should not be assumed that this property has all the necessary Planning, Building Regulations or other consents. Any services, appliances and heating system(s) listed have not been checked or tested. Please note that in some instances the photographs may have been taken using a wide angled lens and please be advised that any site plans used within our particulars are for illustrative purposes only and may not be to scale. Any distance from schools are for guidance only and you should make your own enquiries with the local authority.