



Daffern Avenue, Coventry, CV7 8GR

**SHELDON  
BOSLEY  
KNIGHT**

LAND AND  
PROPERTY  
PROFESSIONALS

# Property Description

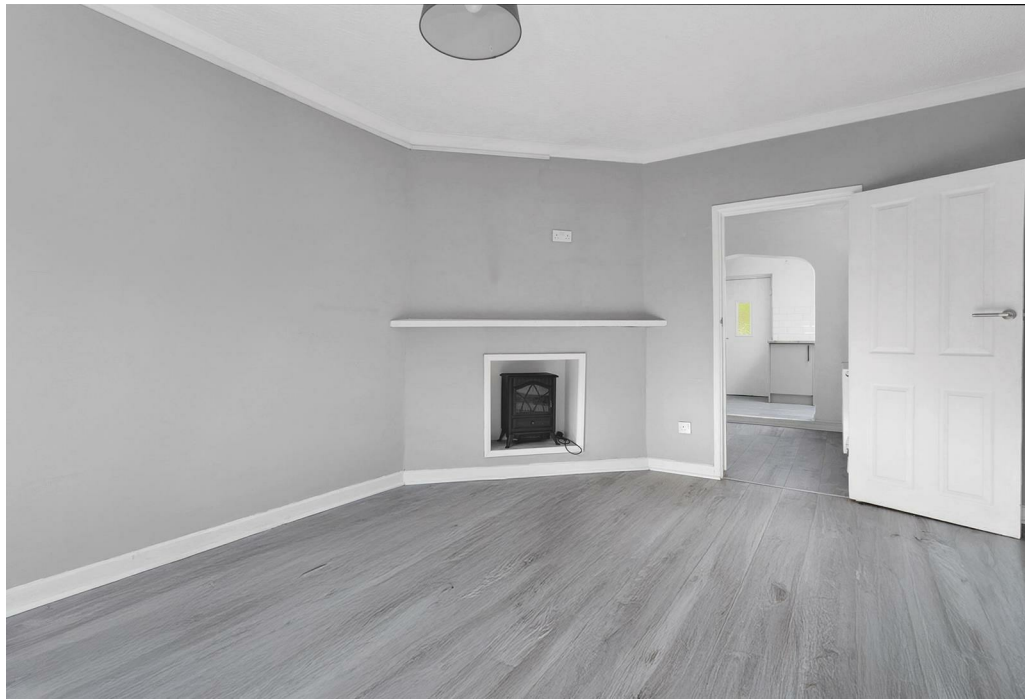
\*\*\* AVAILABLE NOW \*\*\* This well-presented three-bedroom mid-terraced home is located in the semi-rural village of Gun Hill / New Arley, Coventry, set within a quiet cul-de-sac just off Frederick Road and close to open countryside - ideal for families or professionals seeking a peaceful setting with good connectivity.

The property comprises an entrance hallway, a front lounge with bay window, a separate dining room, an extended and well-appointed fitted kitchen, and a ground floor bathroom. To the first floor are three bedrooms, all well proportioned.

Externally, the property benefits from a lawned foregarden and a rear garden providing off-road parking via a double-width driveway. Additional features include gas central heating, UPVC double glazing, and modern external fittings.

Offered UNFURNISHED. Council Tax Band A. Energy Rating D.







## Key Features

- Available Now
- Semi Rural New Arley location
- 3 Bedrooms
- Semi Detached House
- Unfurnished
- Council Tax Band A
- Energy Rating D

**£925 PCM**