

CHARMILL

RESIDENTIAL

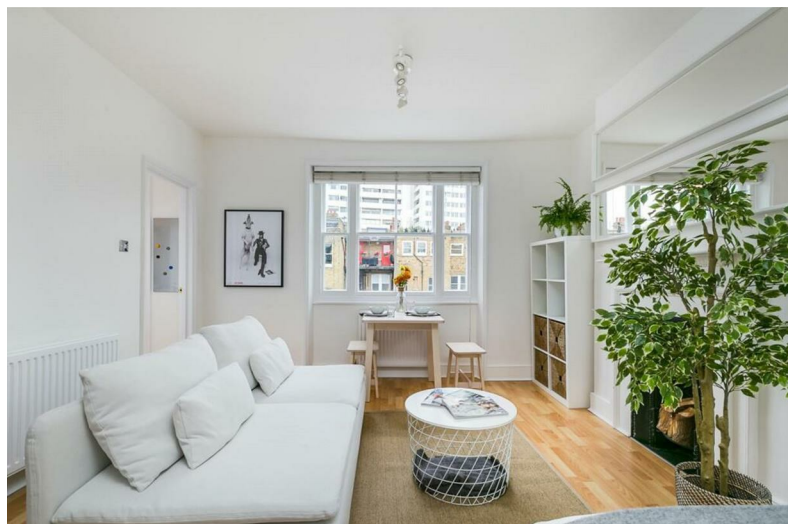


Nottingham Place, Marylebone WIU

£895



Nottingham Place



Description

A refurbished third floor studio apartment located in a prestigious conversion on Nottingham Place, located in the heart of Marylebone Village. The apartment is in excellent decorative order throughout comprising a well proportioned studio room with wooden flooring, separate kitchen and a shower room. The apartment is 0.3 miles away from Baker Street Underground station (Circle & Hammersmith & City lines) and the green open spaces of Regent's Park are just a short walk away, as are the eclectic shops and restaurants of London's West End.

- Studio Flat
- Shower room
- Wooden flooring
- Furnished

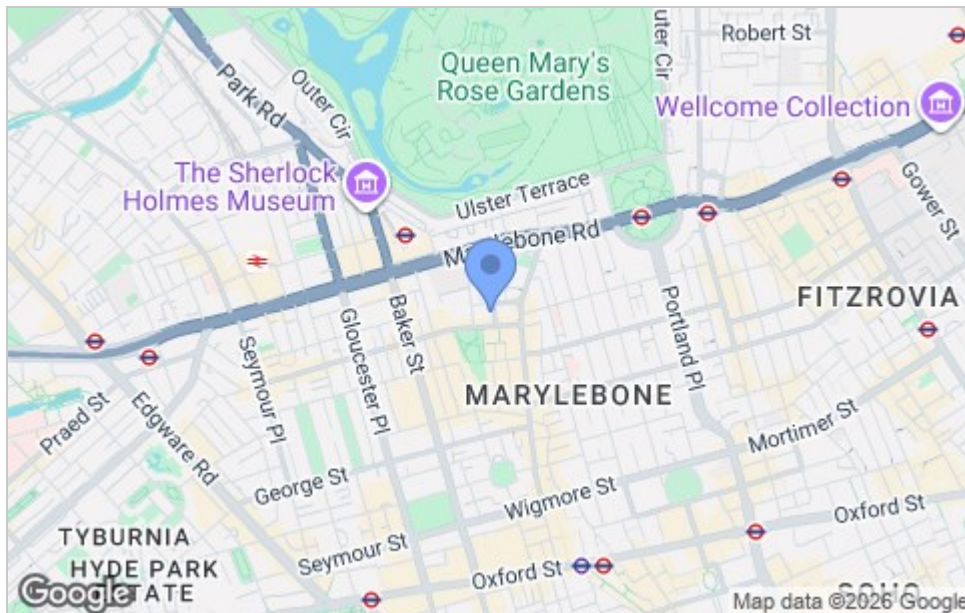




Floor Plan



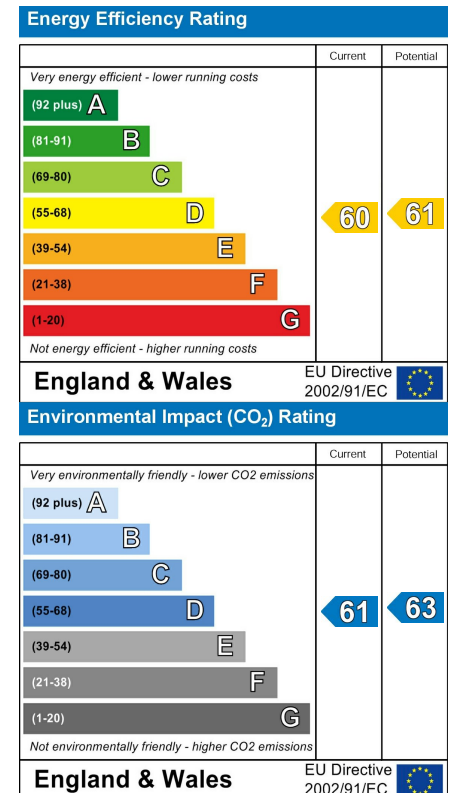
Area Map



Viewing

Please contact us on 020 7046 6275 if you wish to arrange a viewing appointment for this property or require further information.

Energy Efficiency Graph



These particulars, whilst believed to be accurate are set out as a general outline only for guidance and do not constitute any part of an offer or contract. Intending purchasers should not rely on them as statements of representation of fact, but must satisfy themselves by inspection or otherwise as to their accuracy. No person in this firm's employment has the authority to make or give any representation or warranty in respect of the property.

020 7046 6275 • sales@charmillresidential.co.uk • 51 Maida Vale, Little Venice, London W9 1SD
charmillresidential.co.uk