



MALVERN MEWS, NW6

£685,000

Tucked away within a private cobbled mews, this immaculately presented two bedroom house offers stylish interiors throughout

Freehold
Mews House
Two Bedrooms


Good condition
Approx 722 sq ft
Chain free

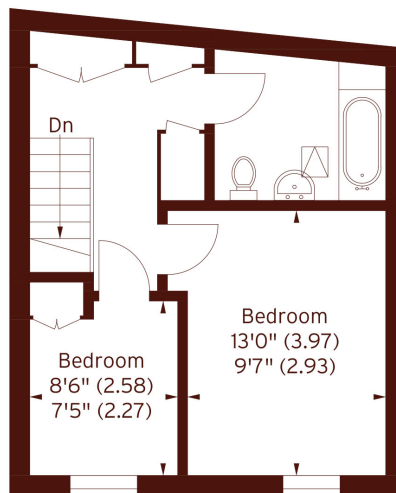
STEP INSIDE MALVERN MEWS

Malvern Mews, NW6

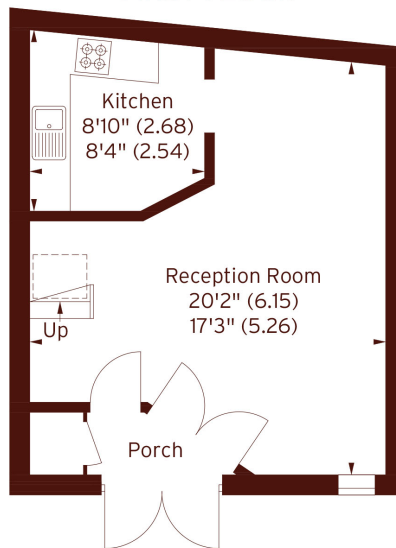
APPROX. GROSS INTERNAL FLOOR AREA 722 SQFT / 67.1 SQM
729 SQFT / 67.7 SQM (INCLUDING REDUCED HEADROOM)



 = Reduced headroom below 1.5m / 5'0



FIRST FLOOR



GROUND FLOOR

The floor plan is not to scale and measurements and areas shown are approximate and therefore should be used for illustrative purposes only. The plan has been prepared in accordance with the RICS code of measuring Practice and whilst we have confidence in the information produced, it must not be relied on. If there is any aspect of particular importance, you should carry out or commission your own inspection of the property.

Little Venice
020 7993 3050

Energy Rating: C We aim to make our particulars both accurate and reliable. However, they are not guaranteed; nor do they form part of an offer or contract. If you require clarification on any points then please contact us, especially if you're traveling some distance to view. Please note that appliances and heating systems have not been tested and therefore no warranties can be given as to their good working order

**MARSH &
PARSONS**