



## Bryanston Mews West, W1H

£1,395 Per week

A spacious three double bedroom mews house with a private roof terrace, patio garden and garage.

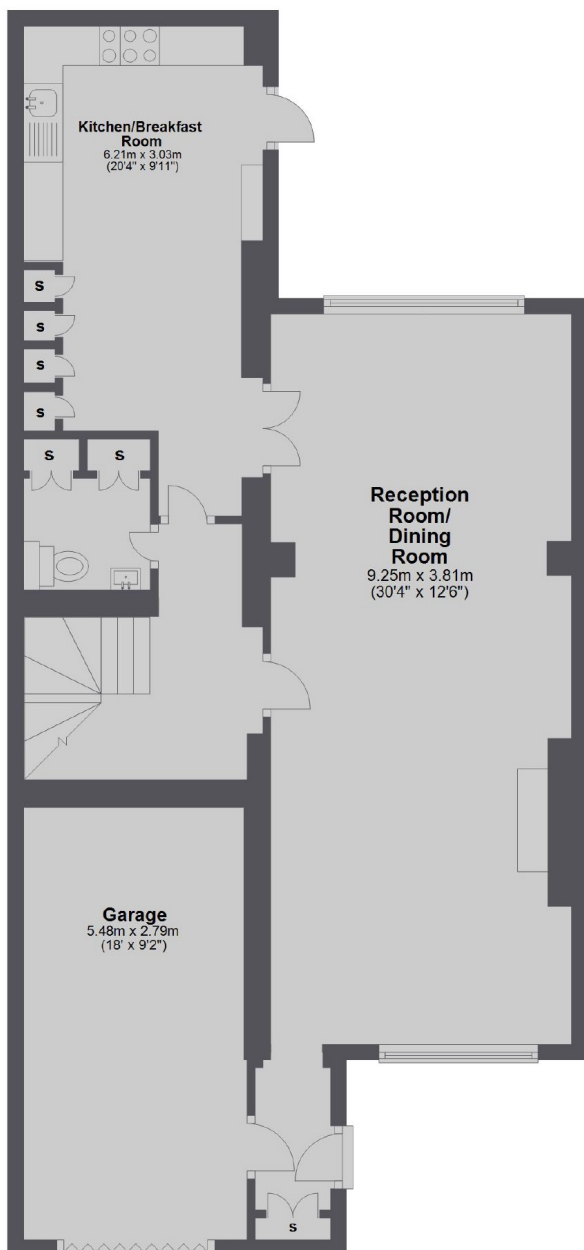
Bryanston Mews West is within walking distance of transport links accessible from Marble Arch, Paddington, Marylebone and Baker Street Stations.

### Features

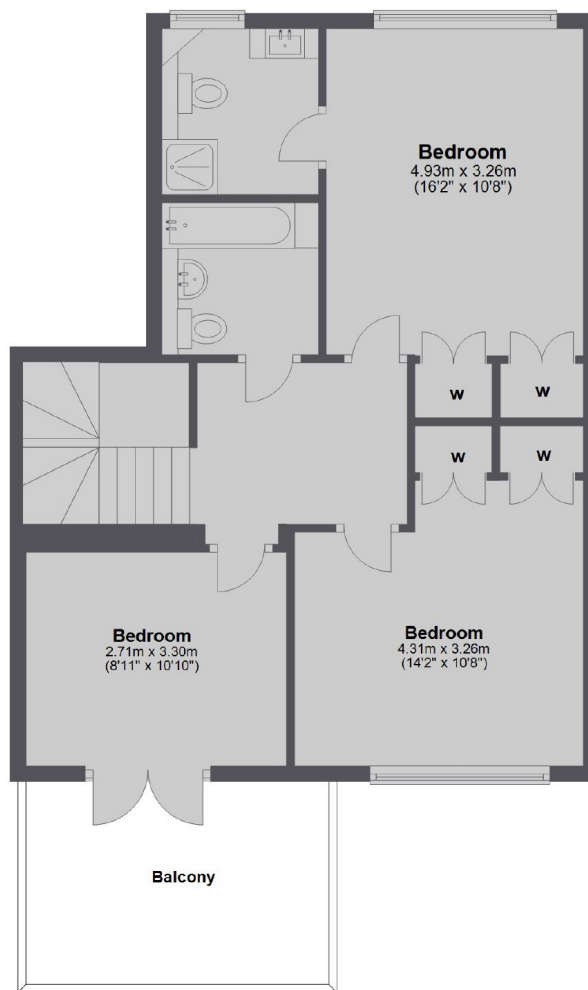
- Mew House
- Three Double Bedrooms
- Private Roof Terrace
- Garage
- Modern Kitchen
- 30ft Reception

# Bryanston Mews West, London, W1H

## Ground Floor



## First Floor



Total area: approx. 143.6 sq. metres (1545.9 sq. feet)