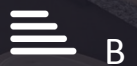




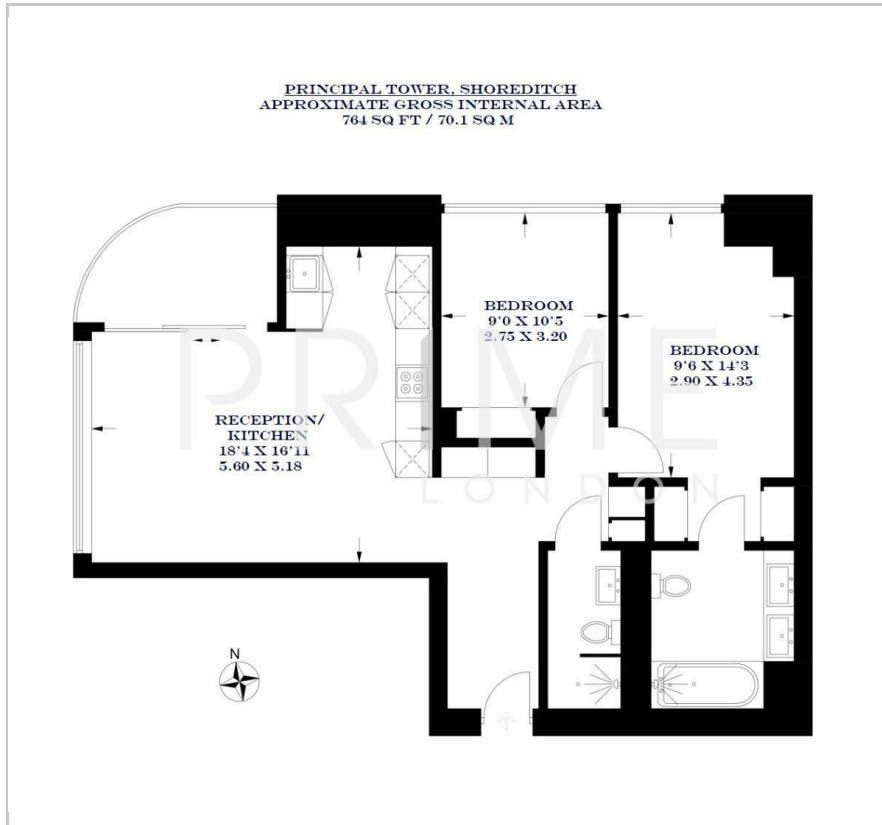
Principal Tower

2 Principal Place, Worship Street, EC2A 2FD

£1,060 Per Week



Floor Plan



Area Map



Energy Efficiency Graph



Viewing

By appointment. Contact us on 0207 052 1075 if you wish to arrange a viewing appointment for this property, or require further information.

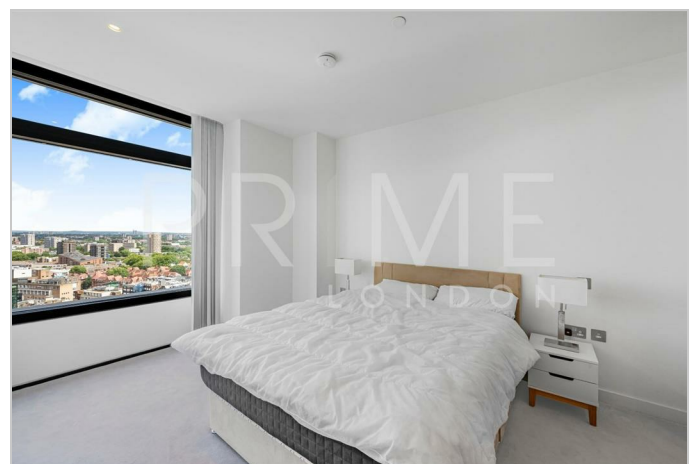
- Modern two bedroom ▪ 764 sq ft (70.1 sqm) apartment
- Private balcony ▪ Fully furnished
- Sauna, jacuzzi, steam room ▪ 24 hour concierge service and gym

This high floor luxury two bedroom apartment, set in a great position within Principal Tower and boasting bright and expansive views across London, comes fully furnished, and is available to rent through Prime London.

Every apartment has been spatially configured in order to maximise the impact of the views beyond, with this property featuring two spacious double bedrooms with ample built in storage, a generous open plan living area, private balcony and two beautifully finished bathrooms, totalling 764 sq ft (70.1 sqm) internally with a generously sized balcony.

Principal Tower enjoys a prestigious location overlooking the heart of the City of London, the top global financial centre and Shoreditch, the trend setting capital of the world.

This rare opportunity to live at this sought after location means both the world's financial powerhouse of London Stock Exchange and high fashion brands at the Royal Exchange are all just a short walk away, as are five major transport hubs, thus making it convenient to access all corners of the capital with ease and speed.



These particulars, whilst believed to be accurate are set out as a general outline only for guidance and do not constitute any part of an offer or contract. Intending purchasers should not rely on them as statements of representation of fact, but must satisfy themselves by inspection or otherwise as to their accuracy. No person in this firm's employment has the authority to make or give any representation or warranty in respect of the property.