



**Guide Price**  
**£275,000**

**Leasehold**

2x  2x  1x 

**Gloucester Court,  
Warwick Road, Redhill,  
Surrey, RH1**

**cubitt & west**  
Helping you move forwards



## Main features

- Open plan lounge/diner with French doors out to balcony
- Fitted kitchen with integrated appliances
- Spacious double bedrooms with ample storage in both
- Popular Redhill location within easy reach to town centre, train station and local amenities
- Allocated parking for residents with visitor bays

## Accommodation

### FIRST FLOOR

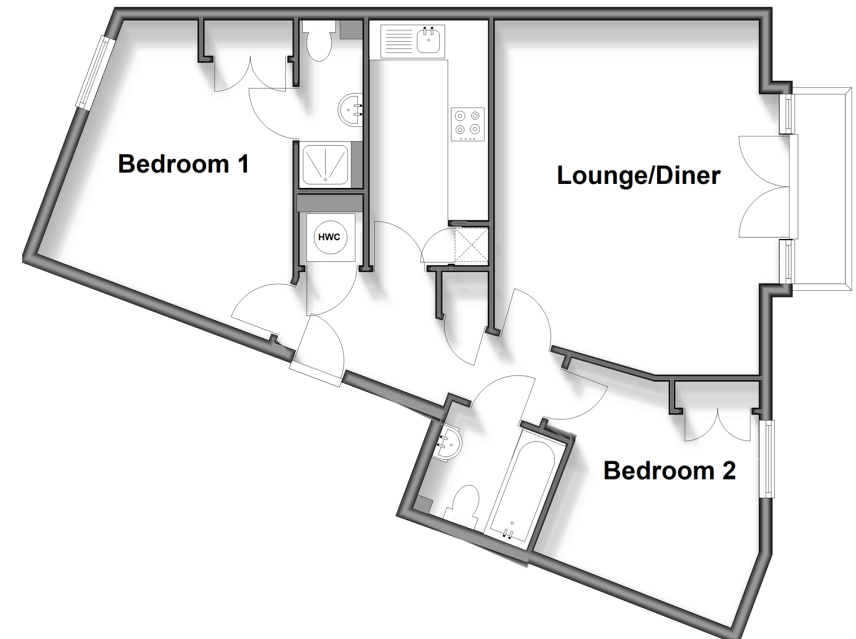
- Entrance Hall
- Lounge/Diner: 18'7 x 13'8 (5.67m x 4.17m)
- Balcony
- Kitchen: 12'6 x 5'9 (3.81m x 1.75m)
- Bedroom 1: 13'7 x 11'8 (4.14m x 3.56m)
- En Suite Shower Room
- Bedroom 2: 10'5 x 9'7 (3.18m x 2.92m)
- Bathroom

### OUTSIDE

- Allocated Parking

## First Floor

Approx. 67.5 sq. metres (726.4 sq. feet)



Call Redhill - 01737 778866 ■ [cubittandwest.co.uk](http://cubittandwest.co.uk)

■ Legal advice should be taken to verify fixtures/fittings, planning, alterations and/or lease details

■ Appliances & services are untested, dimensions are approximate and floor plans are not to scale



23411393/20250918/JB2/JB2