



76-78 Cadogan Place | | London | SW1X 9RP

£21,016 Per month

**ESON2**  
REAL ESTATE

## Key features

- White Stucco
- Underfloor Heating
- Private Garden & Patio
- Oak Wood Flooring
- Gaggenau appliances
- Three Bedrooms and Bathrooms

## Description

A stunning 3-bedroom apartment overlooking Cadogan Place gardens at the Pont Street junction. Featuring elegant period interiors, a modern rear extension with a sleek kitchen, and a charming garden room, blending classic charm with contemporary living.



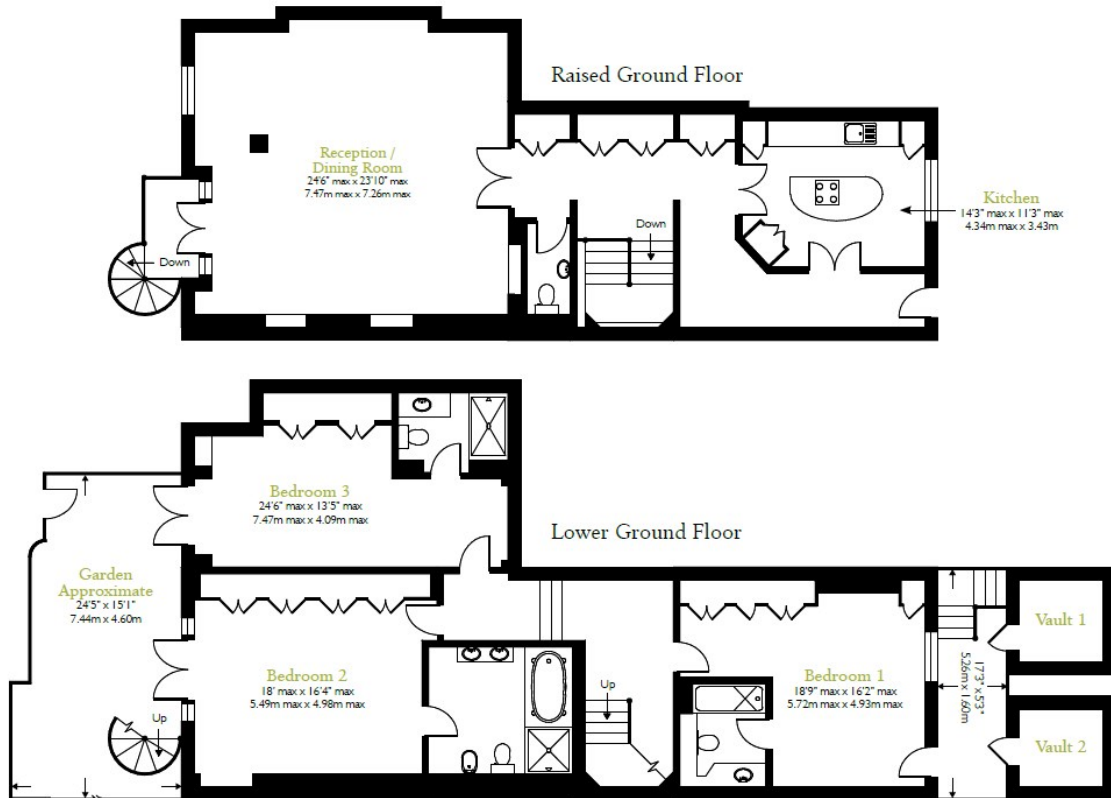
## Directions



A beautifully appointed three-bedroom apartment on one of Chelsea's finest addresses, overlooking the private gardens of Cadogan Place at the Pont Street junction.



Floor Plan Approx. gross internal area 2,265ft<sup>2</sup> / 210.4m<sup>2</sup> (excludes vaults)



Energy Efficiency Rating		
	Current	Potential
Very energy efficient - lower running costs		
(92 plus) <b>A</b>		
(81-91) <b>B</b>		
(69-80) <b>C</b>		
(55-68) <b>D</b>		
(39-54) <b>E</b>		
(21-38) <b>F</b>		
(1-20) <b>G</b>		
Not energy efficient - higher running costs		
<b>England &amp; Wales</b>	EU Directive 2002/91/EC	

Council Tax Band F    EPC Rating C



301 Michelin House 81 Fulham road  
 London  
 Greater London  
 SW3 6RD  
 07920 257649  
 fayeel@eson2.co.uk  
 www.eson2.co.uk