

Cromwell Road, TW11

£449,999

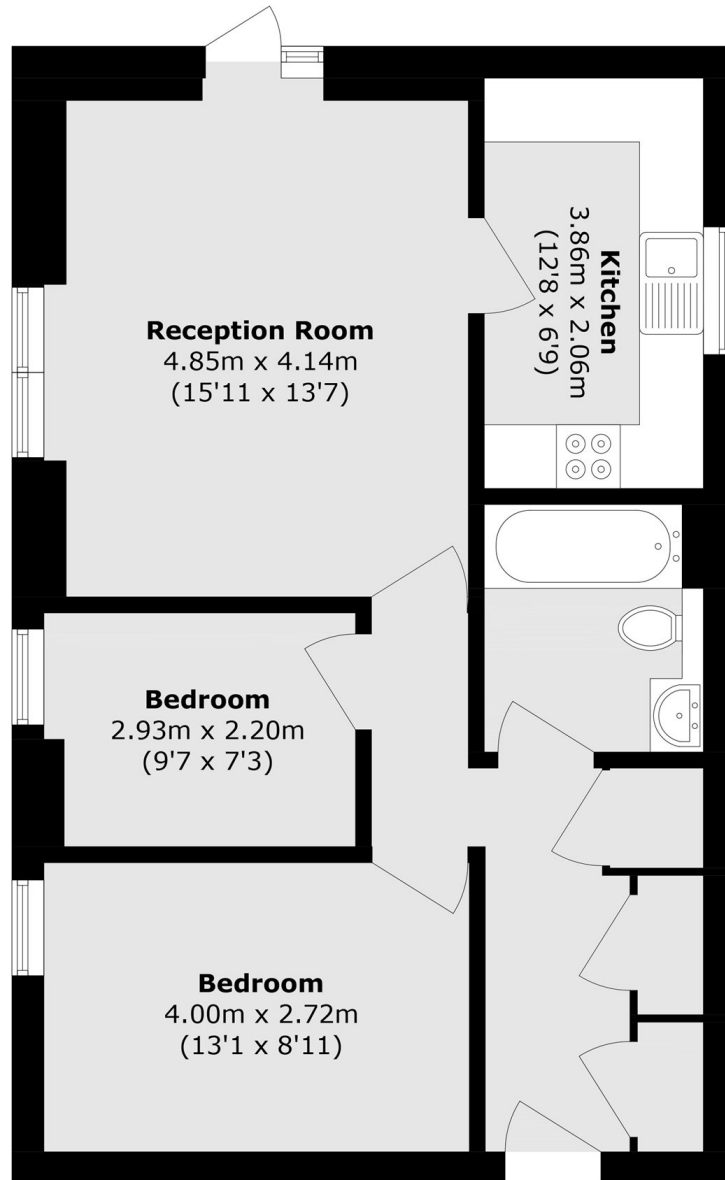
Located in a great spot which is perfect for transport links to the city. This development is very popular, it offers off street parking and communal gardens. With no onward chain you can move in quickly.

Cromwell Road leads from Kingston Lane and Station Road. Teddington train station is on your doorstep with a shortcut through to Bushy Park. The High Street is nearby with coffee shops, bars, restaurants and supermarkets

Features

- Share Of Freehold
- Two Double Bedrooms
- Parking
- Ample Storage
- Communal Gardens
- Garage

Cromwell Road, Teddington, TW11



Total area (approx.): 62.6 sq. m (673.8 sq. ft)