



Marlborough Road, TW12

£2,850,000

Dexters



Marlborough Road, TW12

Tanglewood is an exceptional detached five bedroom home, discreetly tucked away; stylish and contemporary in design, every aspect of the property has been thoughtfully curated to create a home that is both sophisticated and effortlessly impressive.

Filled with natural light from striking Crittall-style windows and doors, the home has a sleek, contemporary feel throughout. The open-plan layout flows beautifully and is perfectly suited to both modern family living and entertaining.

Upstairs are four generous double bedrooms and two stylish bathrooms, with vaulted ceilings adding a wonderful sense of space and character.

Set within peaceful surroundings, the property also benefits from a large rear garden, ample off-street parking, and a garage, completing this exceptional home.

Marlborough Road is a quiet private road located off Broad Lane, within walking distance to Hampton Mainline Station with its direct route to London Waterloo, sought after schools, bus routes to Richmond & Kingston, and is close to Bushy Park & The River Thames.

Features

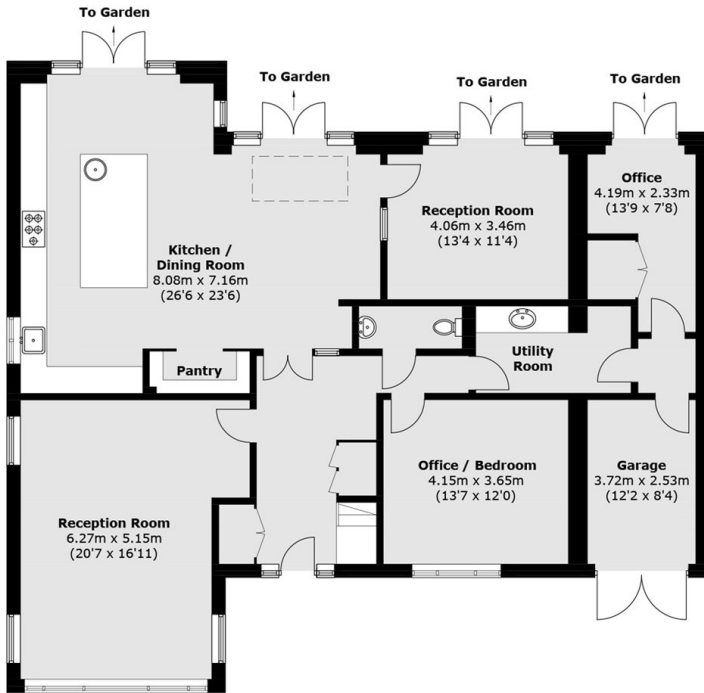
- Detached
- Large Garden
- Five Bedrooms
- Off Street Parking
- Private Road
- High Spec Finish







Marlborough Road, Hampton, TW12



Ground Floor



First Floor

Total area (approx.): 274.1 sq. m (2,950.4 sq. ft)
(Excluding Eaves)