

150 Great Charles Street

B3 3BZ

Asking Price Of **£265,000**

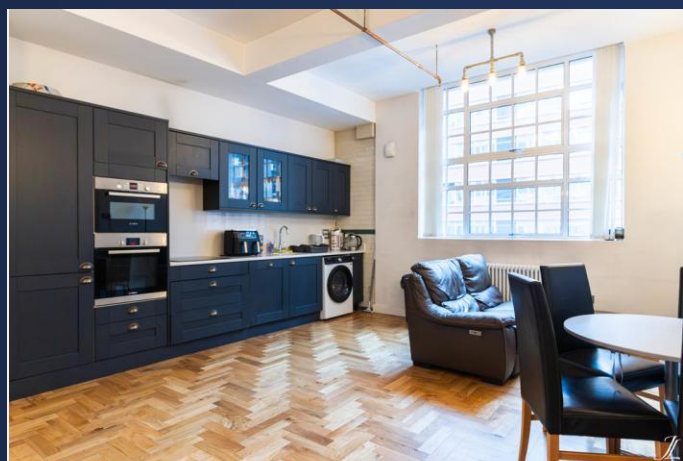
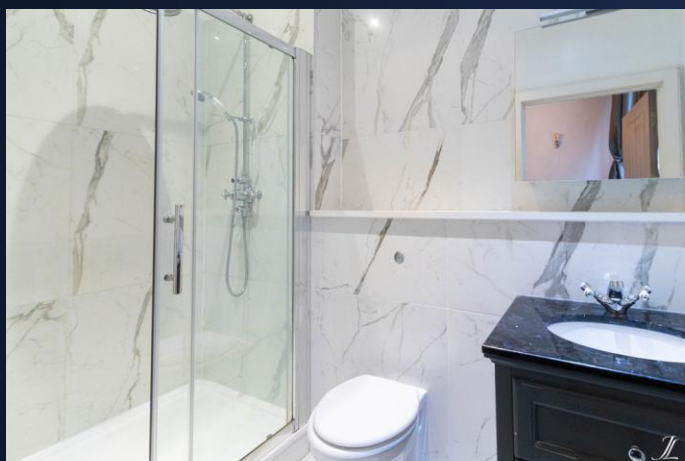
Two-Bedroom Apartment

775 Sq. Ft.

Secure & Allocated Parking

No Upward Chain





Property Description

DESCRIPTION A rare opportunity to own this stunning second-floor apartment in the secure gated development on Great Charles Street *Queensway*, complete with allocated parking, right in the heart of Birmingham City Centre. The internal accommodation of this well presented apartment comprises an Open-Plan Kitchen/ Dining Room, Hallway, Two Double Bedrooms (one of which has an en-suite Bathroom) and a Family Bathroom.

The property benefits from a secure allocated parking for one vehicle adds everyday convenience. Residents also benefit from enhanced security, with lift access restricted by code entry on each floor.

Blending modern luxury with period character, this unique apartment delivers style, exclusivity and a prime central location. Early viewing is highly recommended.

LOCATION Perfectly positioned in the heart of Birmingham City Centre, this development sits on the historic Great Charles Street *Queensway*, just moments from the Colmore Business District, Jewellery Quarter and Paradise development. Residents enjoy immediate access to an array of city amenities, including premium restaurants, stylish bars, independent cafés and boutique shops.

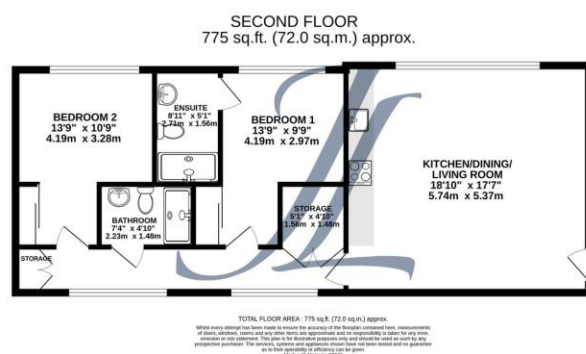
Excellent transport links are within easy reach – Snow Hill and New Street stations are both a short walk away, providing direct connections across the UK. The Midland Metro tram line is also nearby, offering quick access through the city and beyond. For those travelling by car, the property benefits from convenient links to the A38 and Birmingham's ring road network.

The area is also home to a wealth of cultural and leisure attractions, with the Birmingham Museum & Art Gallery, Symphony Hall and the Library of Birmingham all within walking distance. Whether for work, leisure or lifestyle, this location combines the vibrancy of city living with excellent connectivity.

JAMES LAURENCE ESTATE AGENTS Agents Note: We have not tested any of



Floor Layout



Total approx. floor area 775 sq ft (72 sq m)

Whilst every attempt has been made to ensure the accuracy of the floor plan contained here, measurements of doors, windows, rooms and any other items are approximate and no responsibility is taken for any error, omission, or mis-statement. This plan is for illustrative purposes only and should be used as such by any prospective purchaser. The services, systems and appliances shown have not been tested and no guarantee as to their operability or efficiency can be given. Made with Metropix ©2019.

Score	Energy rating	Current	Potential
92+	A		
81-91	B		
69-80	C		
55-68	D	58 D	58 D
39-54	E		
21-38	F		
1-20	G		