



Chepstow Road, W7

£925,000

A fantastic four bedroom semi-detached family home set over three floors with a spacious secluded sun trapped garden. Attractively offered onto the market with no onward chain.

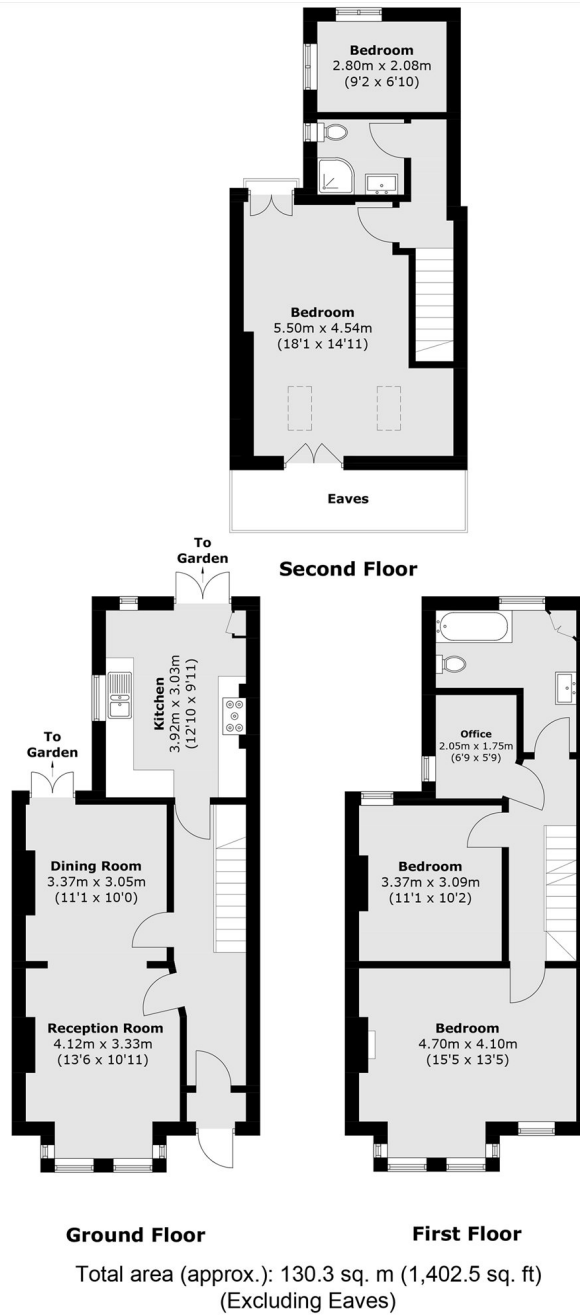


A generous family home, the ground floor offers a double reception/ dining room (with access to the garden) and kitchen (also with access to the garden). Potential to extend to the rear and side (STPP). The first floor comprises two double bedrooms, a nursery/ office and family bathroom. The loft has been tastefully converted to include the principal bedroom (with an abundance of eaves storage), additional single bedroom/office and well presented shower-room.

Ideally located for many Ofsted outstanding schools including Fielding, Oaklands and Elthorne. Lammas, Walpole and Elthorne parks are all a short stroll from the property. Excellent transport links with the option of the Elizabeth line (Hanwell) and Northfields station or Boston manor (Piccadilly).

- No Chain • Semi-Detached • Secluded Garden •
- Ofsted Outstanding Schools • Local Parks • Excellent Transport Links •





Robertson Smith & Kempson Northfields Sales
116 Northfield Avenue,
London, W13 9RT
020 8566 2340
northfieldssales@robertsonsmithandkempson.co.uk

Energy Rating: E. We aim to make our particulars both accurate and reliable. However they are not guaranteed; nor do they form part of an offer or contract. If you require clarification on any points then please contact us, especially if you're traveling some distance to view. Please note that appliances and heating systems have not been tested and therefore no warranties can be given as to their good working order.